

ALUMINIUM RAIL STATIC LINE

3M

SURFACE MOUNTED ALUMINIUM RAIL STATIC LINE

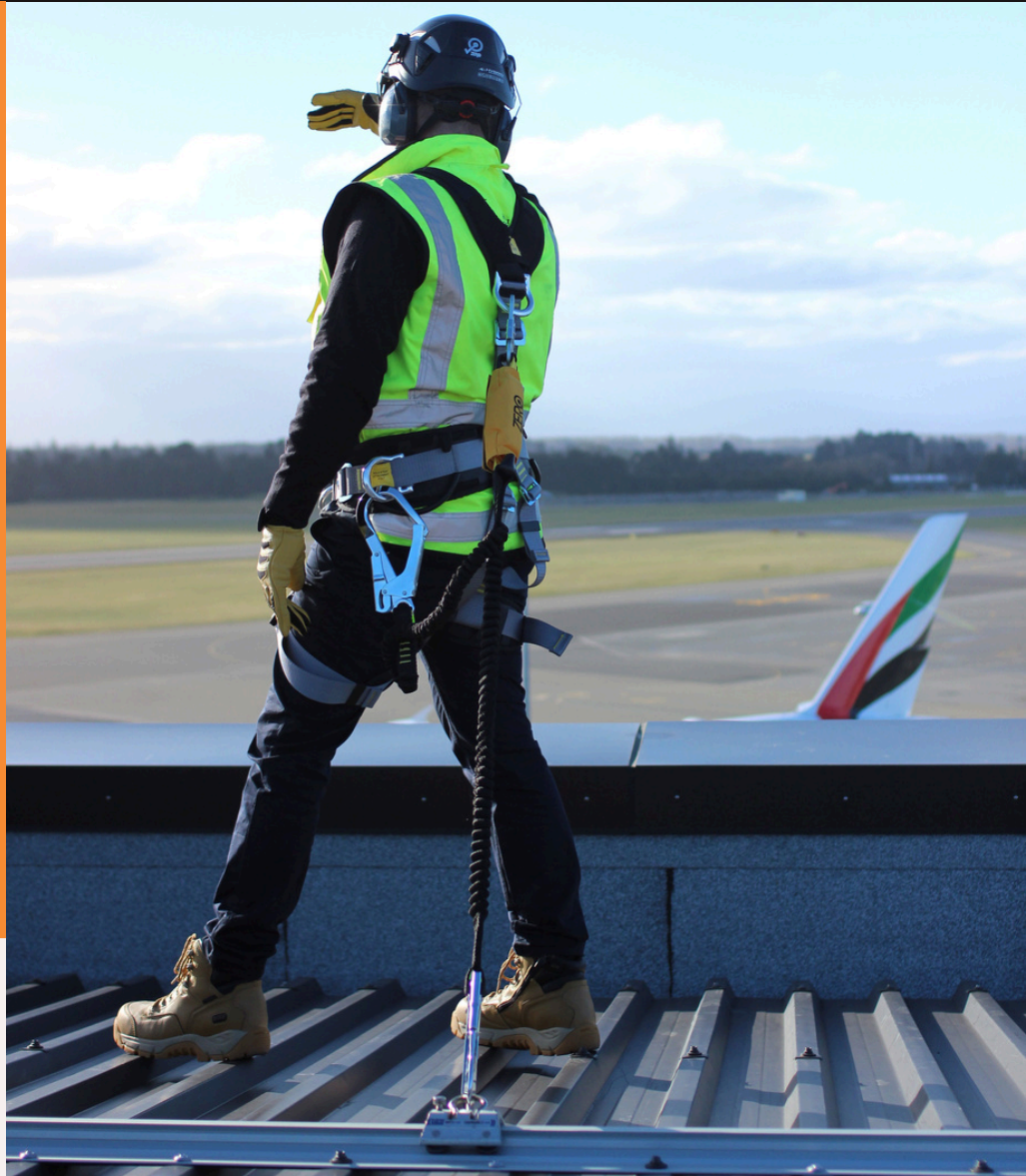
3M RoofSafe™ Rail is a high quality, aluminium rail safety system suited for all building projects and maintenance.

A proprietary system attaches directly to the roof sheeting. The 3M RoofSafe™ Rail system offers exceptional functionality due to the innovative hands free traveler, is capable of navigating corners, changes direction and roof slopes, ensuring continuous safe roof access plus providing complete design flexibility.

HOW IT IS USED

RoofSafe™ Rail's discrete low-profile design provides an unobtrusive safety anchorage solution, ensuring a building's appearance is not spoilt by highly visible anchor points and cables.

RoofSafe™ Rail provides a safety anchorage system for multiple users, allowing more complex maintenance tasks to be undertaken in an efficient manner, including suspended rope access work.



HOW IT WORKS

RoofSafe™ Rail is designed to be fixed directly to metal roof sheeting.

Even load distribution through the fixing system ensures complete safety in the event of a single user fall without damaging the integrity of the roof system.

The solid nature of the anchorage ensures no deflection or unnecessary loading of anchor points during use and makes the system especially beneficial on roofs with a pitch of more than 15 degrees.

PERFORMANCE

Conforms to AS/NZS 1891.2:2001 - Industrial fall-arrest systems and devices - Horizontal lifeline and rail systems, AS/NZS 1891.4:2009 - industrial fall-arrest systems and devices - Selection, use and maintenance, AS/NZS 4488.2:1997 Industrial Rope Access Systems - selection use and maintenance. designed for and tested on most roof types, has been designed to withstand a 15kN load.

INSTALLATION

Installation must be carried out by an Accredited 3M Fall Protection Certified Technician, and in accordance with the manufacturer's installation instructions for service mounted systems. Metal roofs must have a minimum BMT of 0.42mm, aluminium roofs must have a minimum BMT of 0.90mm.

INSTALLATION

Installation must be carried out by an Accredited 3M Fall Protection Certified Technician, and in accordance with the manufacturer's installation instructions for service mounted systems. Metal roofs must have a minimum BMT of 0.42mm, aluminium roofs must have a minimum BMT of 0.90mm.

MAINTENANCE

As per AS/NZS 1891.4 RoofSafe™ Rail must be certified every 12 months by an Accredited 3M Fall Protection Certification technician. All of the exposed materials in the system have specified as naturally corrosion resistant, or have been coated with sacrificial coatings to prevent oxidation of the base material. It is important to consider that in some environments the system may need to be cleaned to gain the best possible life expectancy from the materials.



WARRANTY

RoofSafe™ Rail system has a product warranty of 10 years from the date of installation. The warranty is invalidated if inspections are not maintained every 12 months by an Accredited 3M Fall Protection Certification Technician.

This warranty does not cover Equipment damage resulting from wear, abuse, damage in transit, failure to maintain the product or other damage beyond the control of 3M.

When installed in harsh conditions, e.g. in wet, dusty, abrasive, or corrosive environments, (near the ocean for example), the system shall be inspected more frequently at twice the frequency (6-monthly).

ENVIRONMENTAL

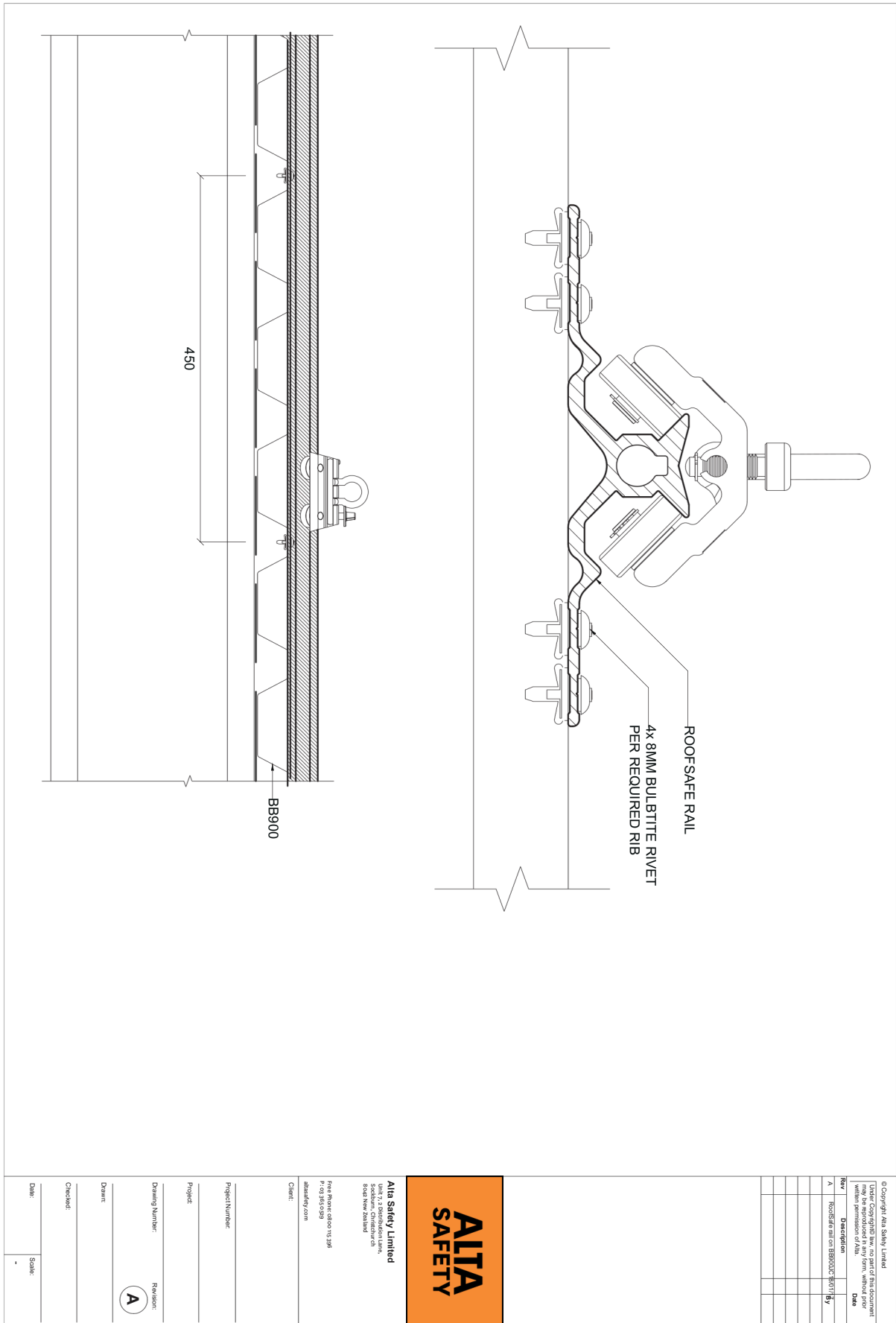
ALTA Safety is committed to reducing its impact on the environment.

We will strive to improve our environmental performance over time and to initiate additional projects and activities that will further reduce our impacts on the environment.

Our commitment to the environment extends to our customers, our staff, and the community in which we operate. We are committed to supplying products with primary components made of recyclable material and is supplied with minimum packaging to retain its structure and integrity during transit.

We will continually measure our environmental impacts and aim to reduce these impacts.

TECHNICAL DRAWING – 3M RoofSafe™ Rail to BB900



© Copyright Alta Safety Limited
Under Copyright law, no part of this document may be reproduced in any form, without prior written permission from Alta Safety Limited.

Rev	Description	Date	By
A	RoofSafe rail on BB900C-BB911		



Alta Safety Limited
100-102, Victoria Road
Scotts Hill, Christchurch
8103 New Zealand

Free Phone 0800 115 396
Tel 03 345 9299
altasafety.com

Client:

Project Number:

Project:

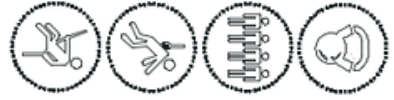
Drawing Number: A Reason:

Drawn:

Checked:

Date: Scale: -

TECHNICAL DRAWING – 3M RoofSafe™ Rail to Corrugate

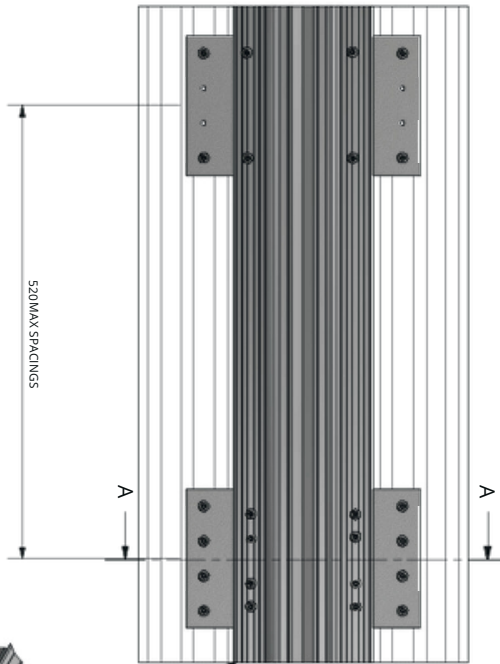


Rate to
15k N per 3m Rail Section

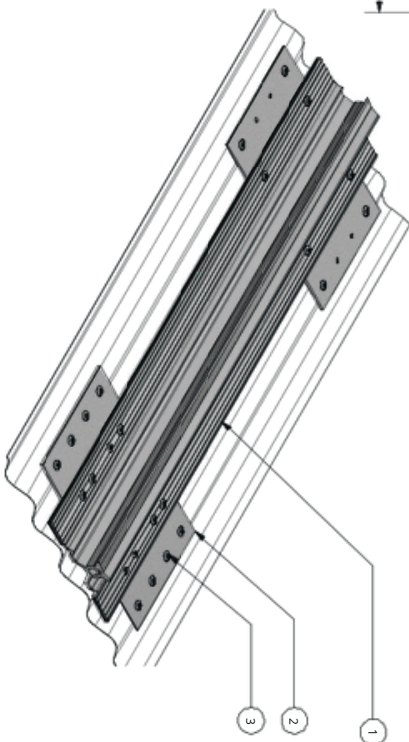
Multiple users per system
Single person per 3m Rail Section

PARTS LIST

ITEM	PART NUMBER	DESCRIPTION
1	40017-9	Roofsafe Rail - Absell - Intermediate Mtg
2	41001-0-1	SPREADER PLATE, ROOFSAFE RAIL, MTG
3	41006-0-1	8mm BULBRITE RIVET - ALU



4 RIVETS PER INTERMEDIATE MTG
4 RIVETS THROUGH RAIL INTO PLATE
4 RIVETS THROUGH PLATE INTO ROOFING



SECTION A-A

SCALE 1:5

© Copyright Alta Safety Limited

Under Copyright law, no part of this document may be reproduced, stored in a retrieval system, or transmitted in any form or by any means, without prior written permission of Alta.

REVISION HISTORY

REV	DESCRIPTION	BY	DATE
A	FIRST ISSUE	ML	

NOTE :

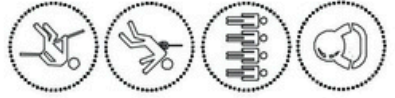
This product is designed, used, installed and maintained in accordance with supporting standards and conditions. Rail System have been installed to comply with AS/NZS 1891.1, 18 Railis for use on corrugated roof systems. Suitable for 1 person per 3m Rail section. For use on corrugated roof systems, please refer to the instruction manual prior to use is essential. To be installed by 3M accredited personnel only. Certification is required as per AS/NZS 1891.4:2009, by a 3M accredited Person only.



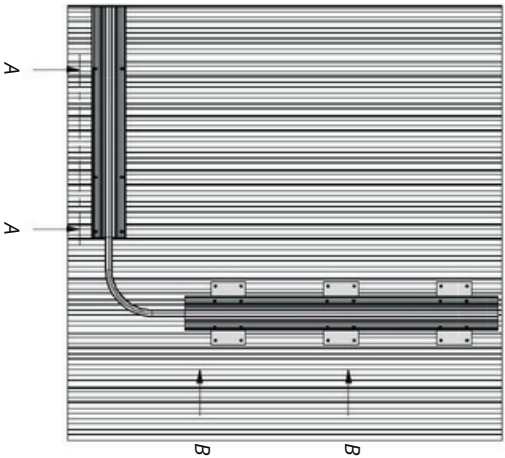
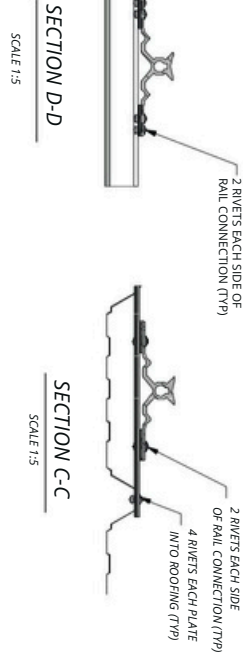
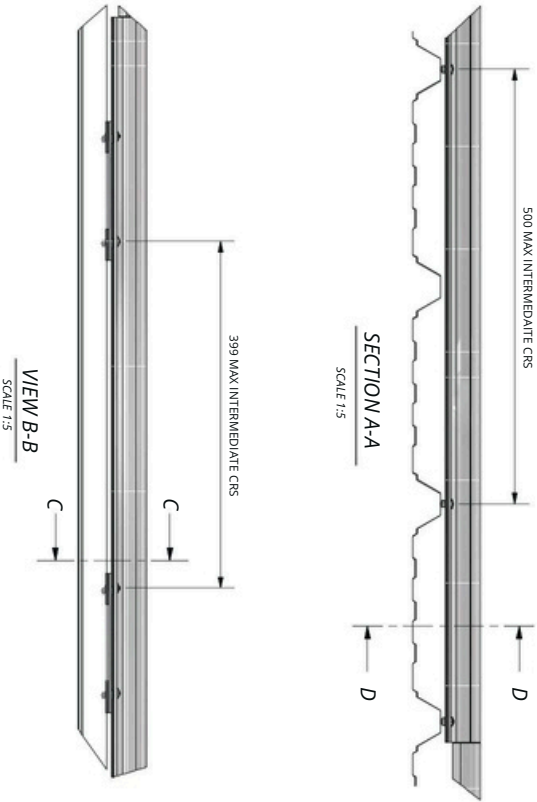
Alta Safety Limited
Unit 7, 2 Bayswater Lane,
Bockhorn, Christchurch
8001 New Zealand
Phone: 03 365 5529
Fax: 03 365 5528
altasafety.com

Client: _____
Description: _____
Project Number: _____
Project: _____
Drawing Number: _____ Sheet Size: **A3**
Drawn: _____
Checked: _____
Date: _____ Scale: **1:5**

TECHNICAL DRAWING – 3M RoofSafe™ Rail to Trapezoidal .55bmt



Rate to
15k Mber 3m Rail Section
Multiple Users per System Single Person per 3m Rail Section



ITEM	PARTS LIST	PART NUMBER/DESCRIPTION
1	400178	End 3000 With Plunger 3000
2	400179	Roofsafe Rail - Absell - Intermediate 3000
3	4100110	ROOFER PLATE - ROOFSAFE RAIL MTG
4	420090	90° x 200° Corner - overhead /floor
5	420137	FOAM STRIP
6	420161	8mm BULBRITE RIVET - ALU

© Copyright Alta Safety Limited
Under Copyright law, no part of this drawing may be reproduced, stored in a retrieval system, or transmitted in any form or by any means, without prior written permission of Alta Safety Limited.

REVISION HISTORY			
REV	DATE	BY	DATE
A	FIRST ISSUE	ML	

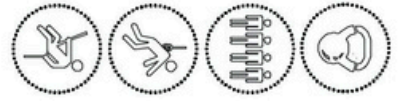
NOTE :



Alta Safety Limited
Unit 7, 2, Dene Road, Llanelli, SA71 3BN
Bridges Way, St David's Park, Llanelli, SA71 3BN
Phone: 01353 5388
Fax: 01353 5099
alta@altaf.com

Client: _____
Description: _____
Project: _____
Project Number: _____
Drawing Number: _____
Sheet Size: **A3**
Drawn: _____
Checked: _____
Date: _____
Scale: **1:20**

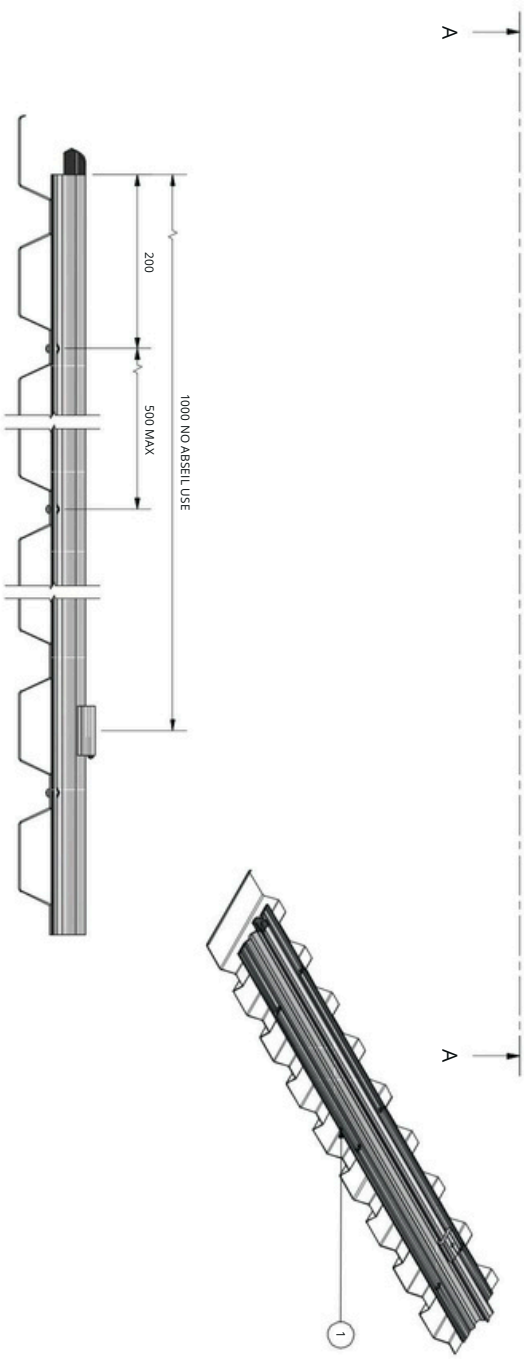
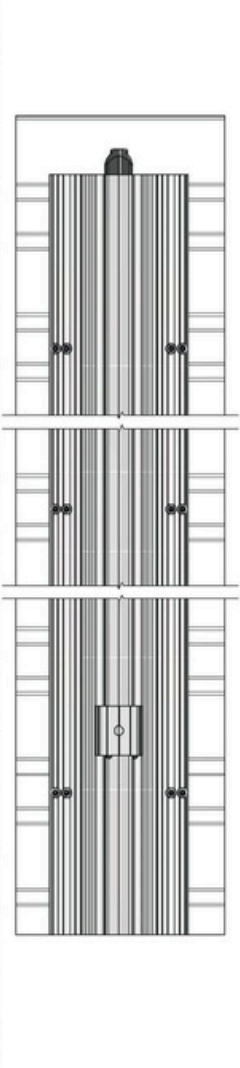
TECHNICAL DRAWING – 3M RoofSafe™ Rail to BB900 .55bmt



Rate to
15k N per 3m Rail Section

Multiple Users per System
Single Person per 3m Rail Section

PARTS LIST		DESCRIPTION
ITEM	QTY	End 3000 With Plunger Stop
1	1	4011 / 8



VIEW

© Copyright Alta Safety Limited
Under Copyright law, no part of this document may be reproduced in any form without the written permission of Alta.

REVISION HISTORY			
REV	DRWN	DATE	DESCRIPTION
A	FIRST ISSUE	ML	

NOTE :

This product is designed, used, installed and maintained in accordance with supporting technical information and additional conditions. Rail System have been installed to comply with AS/NZS 1891.2. 15 Rail is suitable for multiple persons for Absfl and Fall Arrest over the entire system, however only one person per 3m Rail Section. Refer to PS1 and PS2 instruction manual prior to use is essential. To be installed by 3M accredited personnel only. Annual inspection & re-certification is required as per AS/NZS 1891.4:2009. By a 3M accredited Person only.



Alta Safety Limited
Unit 7, 3 Dandenong Lane,
Saddlem, Chesham,
Sussex BN8 3LW
From Riverside 01293 113388
P: 01293 345 0029
alta@altery.com

Client: _____
Description: _____
Project Number: _____
Drawing Number: _____
Sheet Size: **A3**
Drawn: _____
Checked: _____
Date: _____
Scale: **1:5**

Alta Safety

NEW ZEALAND OFFICES

**ALTA
SAFETY** FALL
PROTECTION
SPECIALISTS

CHRISTCHURCH

Unit 7, 2 Distribution Lane,
Sockburn, Christchurch 8042

AUCKLAND

B7 / 930 Great South Road
Penrose, Auckland
1061

WELLINGTON

Unit 8, 16 Jamaica Drive,
Grenada North, Wellington
5028

design@altasafety.com



TECHNICAL DRAWINGS KEY



Rate to
15kN



Person
Capacity



Abseil



Fall Arrest



Restraint
Technique