

# TOP MOUNT ROPE ACCESS ANCHOR

## KATTSAFE

### TOP MOUNT ROPE ACCESS ANCHOR - AP141

The Kattsafe top mount rope access anchor is designed for fast installation and ultimate strength, for abseil workers.

The Kattsafe top mount rope access anchor is a lightweight, high strength metal deck mounted anchor for safe work at height.

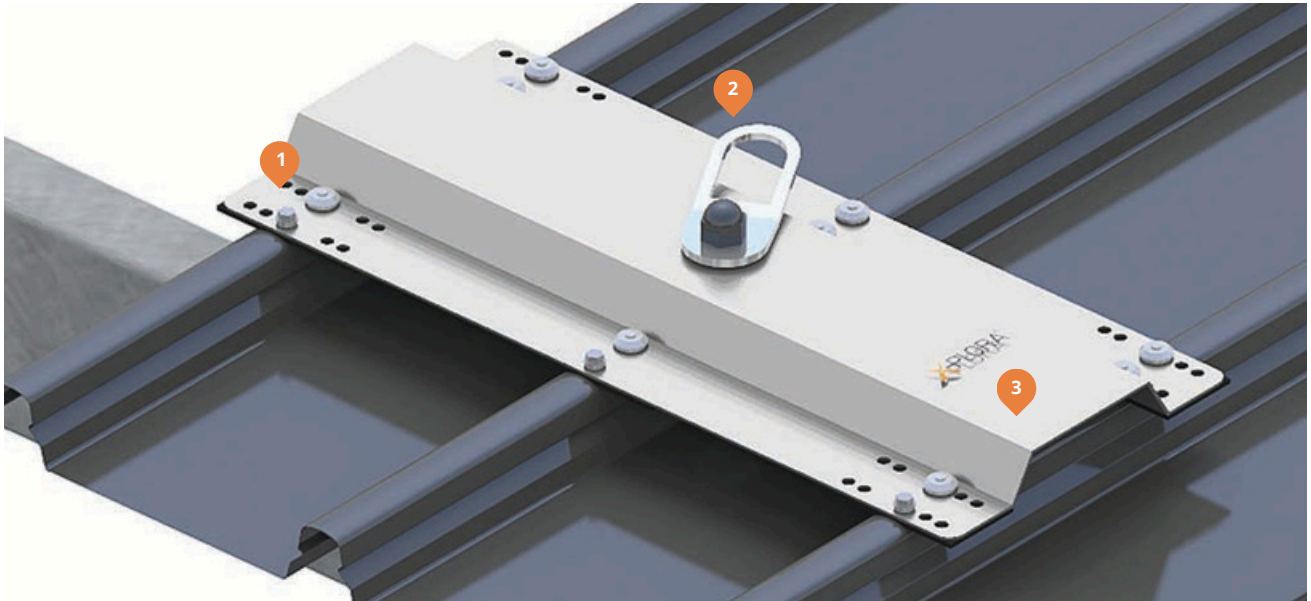
### Features & Benefits of the System

- Fall arrest/rope access use.
- 15kN rated (fall arrest)/12kN rated (rope access).
- Swivel eyelet with load-absorbing design eliminates snap hook roll-out.
- Easy installation.
- Weight: 2.8kg



## TOP MOUNT ROPE ACCESS ANCHOR

The Kattsafe top mount rope access anchor is a lightweight, high strength metal deck mounted anchor for safe work at height.



### Universal mounting

Allows for easy installation into various roof deck types. Wide deck option for larger crest spacing.



### Swivel eyelet

Removes risk of snap hook roll-out, and provides uniform load distribution.



### Low profile, high strength design

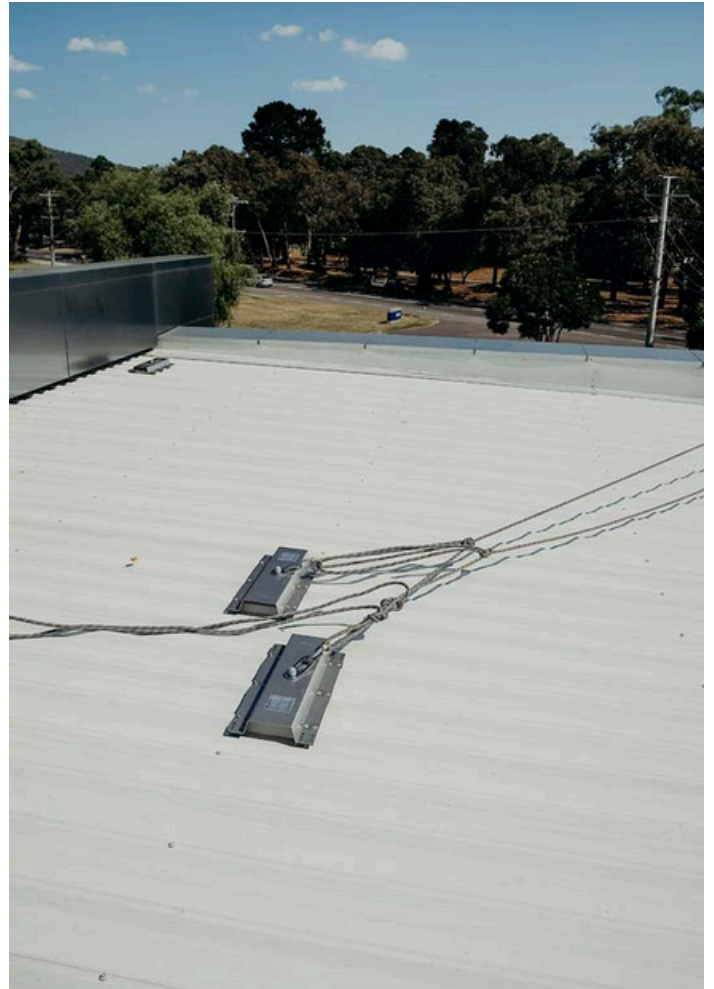
With minimal architectural impact, the plate sits low across the roof. Constructed of 304 stainless steel to provide ultimate durability.

The top mount rope access anchor is designed for fast installation and ultimate strength.

The top mount rope access anchor provides rope access and fall arrest as a surface mounted anchor for metal decks. Installed in pairs for use as a primary rope access connection always use with a backup/rescue anchor.

#### Features and benefits of the system:

- Fall arrest/rope access use.
- 15kN rated (fall arrest)/12kN rated (rope access).
- Swivel eyelet with load-absorbing design eliminates snap hook roll-out.
- Easy installation.
- Weight: 2.8kg.



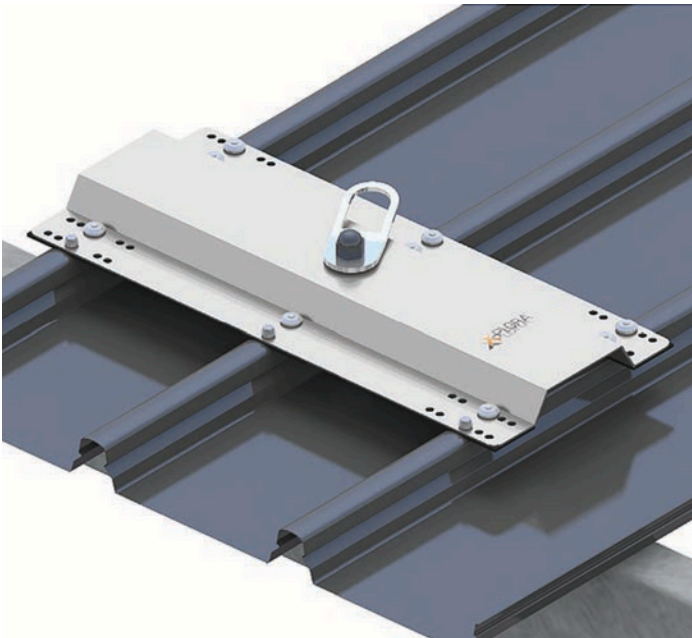
---

## TOP MOUNT ROPE ACCESS ANCHOR CONFIGURATIONS

---

### AP141 Top mount rope access anchor

Designed to be installed onto roofs with normal spacings between roof sheet crests.

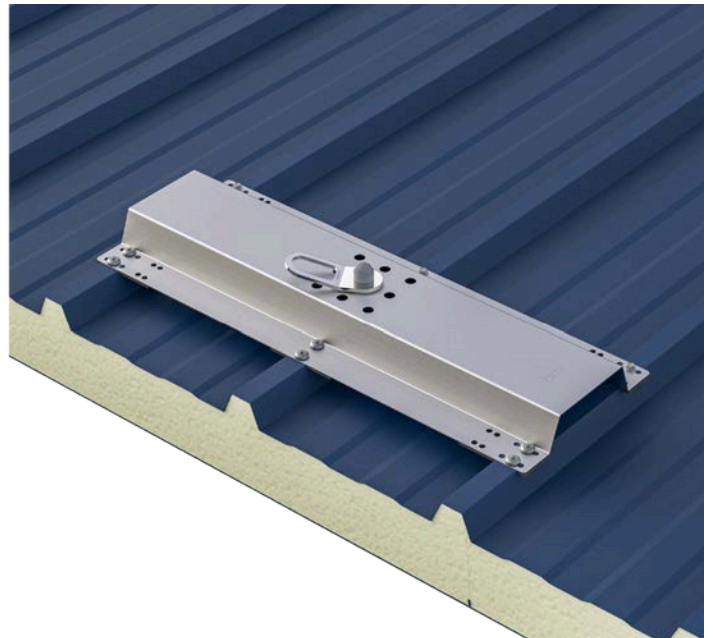


---

### AP141W Top mount rope access anchor

#### - wide deck

Designed to be installed onto roofs where there are wider spacings between roof sheet crests. Suits 300-372mm roof deck.



---

## TECHNICAL SPECIFICATION

### Top mount rope access anchor RL400

The top mount rope access anchor for metal decks is a surface mounted anchor. Installed in pairs for use as a primary rope access connection always use with a backup/rescue anchor System design, supply, layout, installation and certification by a Kattsafe approved installer, as per the manufacturer's installation instructions and current standards.

---

#### Materials

- Plate: 304 profiled stainless steel
- Eyelet: 316 profile stainless steel

---

#### Dimensions

- Total height: 70mm (includes swivel)
- Overall size: 267mm x 552mm

---

#### Weight

2.8kg (excludes fixings)

---

#### Fixings (refer to installation manual)

- Timber fixing: 3 x 14g 75mm type 17 tek screws and 9 x 8mm structural rivets.
- Purlin fixing: 3 x 14g 75mm self-drilling tek screws and 9 x 8mm structural rivets.

---

#### Substructure requirements

- The roof structure and deck must be in good condition
- Minimum roof deck thickness: 0.42mm
- Minimum purlin size: 150 x 1.9mm or
- Minimum purlin size: 100 x 1.5mm
- Minimum timber batten size: 70 x 35mm F7
- Maximum angle of rope line over parapet: 20°

---

#### Rating

- Fall arrest: 15kN
- Rope access: 15kN

---

#### Compliance

The AP141 Top mount rope access anchor is designed and manufactured to conform to requirements of Australian and New Zealand Standard AS/NZS 5532:2013, AS/NZS ISO 22846, AS/NZS 1891.4:2009 and relevant statutory WHS Codes of Practice/Guidelines.

---

#### Testing

Testing and performance based on requirements of Australian and New Zealand Standard AS/NZS 5532:2013 and AS/NZS 1891.4:2009

- Dynamic load tested: 15kN
- Static load tested: 15kN

---

#### Product warranty

10 years from the date of purchase subject to correct installation. Use and maintenance to be in accordance with manufacturer's specifications and recommendations.

---

#### Inspection and maintenance

Inspection and recertification of fall arrest systems and equipment is required at least every 12 months by competent person in accordance with manufacturer's specifications and requirements of Australian and New Zealand Standard AS/NZS1891.4:2009 Section 9 (refer to installation manual).

---

#### Important note

- AP141 Top mount rope access anchor must be used in pairs for rope access. Layout is critical for optimum use and must be done by a rope access technician. The system must only be used by a trained rope access operator.
- Failure to supply and/or install proprietary product in accordance with above standards and codes, specifications and installation/usage guidelines voids complete system certification and/or warranty.

## WARRANTY INFORMATION

Warranty period on this system: 10 years from date of purchase

---

**Should you have a warranty claim as a result of a defect the following procedure must be followed:**

Identify the following information:

- The product/system name and code number.
- The date of purchase/installation.
- Installation company details.
- The installation identification number.
- The name of the company using this system.
- A description of the defect/warranty claim.
- The periodic system maintenance report.

Forward the above information to [design@altasafety.com](mailto:design@altasafety.com) or contact technical helpline, 0800 115 396.

## Terms and conditions

All warranty claims must be made in writing within 14 days of the appearance of the defect.

Incorrect installation or work done by a non accredited Kattsafe system installer will void all warranty rights.

Systems that have been installed using non proprietary equipment will void all warranties.

System roof/cladding and concrete penetration seals are not covered in this warranty.

Systems/components that have not been maintained in accordance with manufacturer's/legislative requirements will void warranty.

Systems used by incompetent persons or use with non compatible accessories ie. harness gear, lanyards, travellers, fall arrestors etc. will void warranty.

Systems/components used for purposes other than their intended use will void warranty.

General wear and tear is expected and will depend on the frequency of use and is not covered by warranty.

# Alta Safety

NEW ZEALAND OFFICES

**ALTA SAFETY** FALL PROTECTION SPECIALISTS

## CHRISTCHURCH

Unit 7, 2 Distribution Lane,  
Sockburn, Christchurch 8042

## AUCKLAND

B7 / 930 Great South Road  
Penrose, Auckland  
1061

## WELLINGTON

Unit 8, 16 Jamaica Drive,  
Grenada North, Wellington  
5028

[design@altasafety.com](mailto:design@altasafety.com)



## TECHNICAL DRAWINGS KEY



Rate to  
15kN



Person  
Capacity



Abseil



Fall Arrest



Restraint  
Technique