

# CABLE STATIC LINE

## 3M ROOFSAFE SURFACE MOUNTED CABLE STATIC LINE

3M RoofSafe™ Cable static line is a modular surface mounted fall arrest cable system with built in Spiratech energy absorbers at every connection to the roof.

The 3M RoofSafe™ Cable system is designed for continuous hands free operation and can be laid out in many different configurations to suit different building types and shapes.

### HOW IT IS USED

3M RoofSafe™ Cable Static Line is designed to be installed to building roofs.

The system is typically used where the Operative is required to move laterally over significant distance whilst staying connected. The system provides fall protection for Operatives doing a range of activities including roof wash downs, installing & maintaining HVAC air conditioning units, general maintenance or gutter cleaning.

The Fall arrest system is designed to support and hold a person in the event of a fall.



### HOW IT WORKS

In the event of a fall, the anchor breaks open, deploying the unique and patented Force Management Technology absorbing system which reduces the forces generated on the roof structure to less than 610 kg. (6kN). In the unlikely event that

the anchor is deployed, it is possible to remove the module and replace it with a new one.

3M RoofSafe™ Cable requires less experience compared to single anchor points making it one of the safest systems to use.



## PERFORMANCE

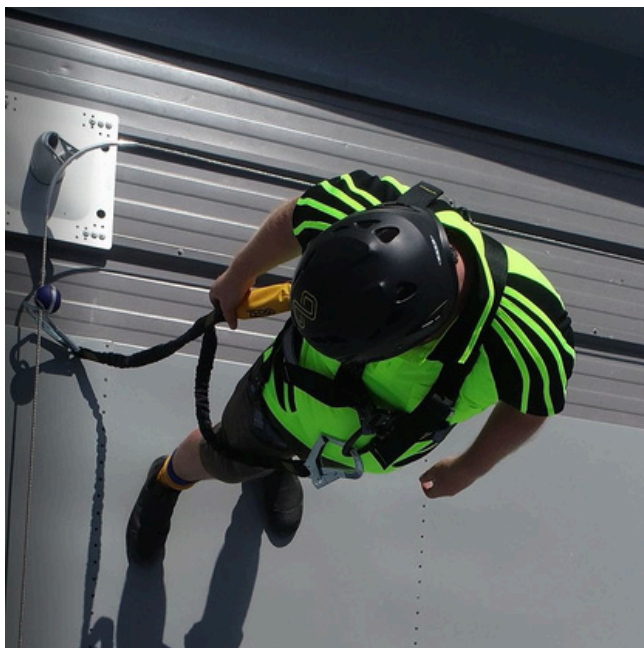
Conforms to AS/NZS 1891.2:2001 - Industrial fall-arrest systems and devices - Horizontal lifeline and rail systems safety standards, AS/NZS 1891.4:2009 - industrial fall-arrest systems and devices - Selection, use and maintenance, designed for and tested on most roof types, has been designed to withstand a 15kN load.

## INSTALLATION

Installation must be carried out by an Accredited 3M Fall Protection Certified Technician, and in accordance with the manufacturer's installation instructions for service mounted systems. Metal roofs must have a minimum BMT of 0.42mm, aluminium roofs must have a minimum BMT of 0.90mm

## MAINTENANCE

As per AS/NZS 1891.4 roofsafe cable must be certified every 12 months by an Accredited 3M Fall Protection Certification technician. All of the exposed materials in the system have specified as naturally corrosion resistant, or have been coated with sacrificial coatings to prevent oxidation of the base material. It is important to consider that in some environments the system may need to be cleaned to gain the best possible life expectancy from the materials.



## WARRANTY

3M RoofSafe™ Surface Mounted Cable Static Line system has a product warranty of 10 years from the date of installation. The warranty is invalidated if inspections are not maintained every 12 months by an Accredited 3M Fall Protection Certification Technician

## ENVIRONMENTAL

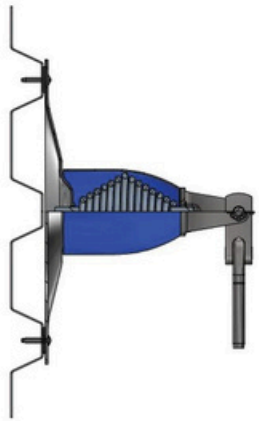
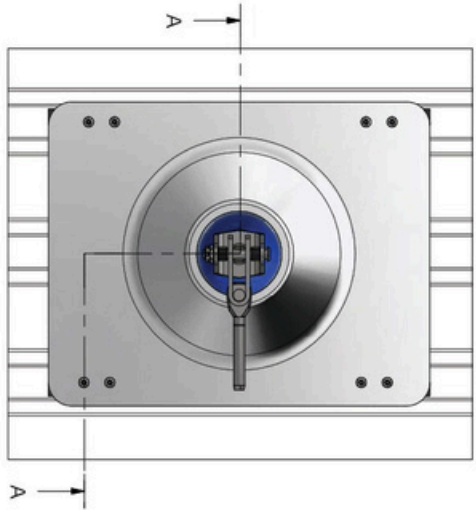
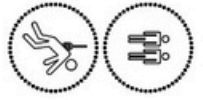
Alta Safety is committed to reducing its impact on the environment.

We will strive to improve our environmental performance over time and to initiate additional projects and activities that will further reduce our impacts on the environment.

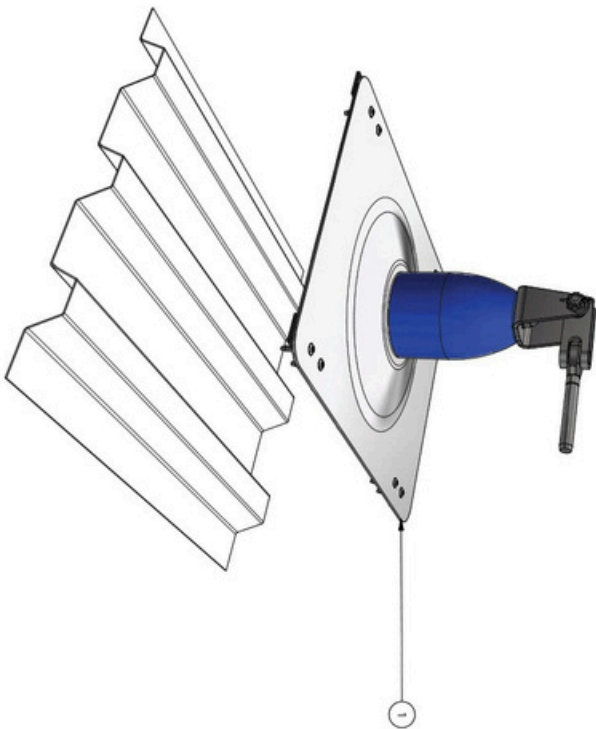
Our commitment to the environment extends to our customers, our staff, and the community in which we operate. We are committed to supplying products with primary components made of recyclable material and is supplied with minimum packaging to retain its structure and integrity during transit.

We will continually measure our environmental impacts and aim to reduce these impacts.

# TECHNICAL DRAWING – 3M Roofsafe Cable to BB900



SECTION A-A  
SCALE 1:5



PARTS LIST			
ITEM	QTY	PART NUMBER	DESCRIPTION
1	1	400001	Roofsafe Cable End No Tensioner

REVISION HISTORY			
REV	DESCRIPTION	DRAWN	DATE
A	FIRST ISSUE	MA	11/09/20

**NOTE:**

This product is designed, used, installed and maintained in accordance with supporting technical information and additional conditions. Cable system have been installed to comply with AS/NZS 1891.2: 2015 Cable System is suitable for 2 persons **FOR FALL ARREST ONLY**. Refer to PFI, Reading instruction manual prior to use is essential. To be installed by accredited person. Annual inspection & re-certification is required as per AS/NZS 1891.4:2009

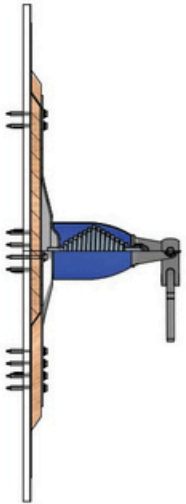
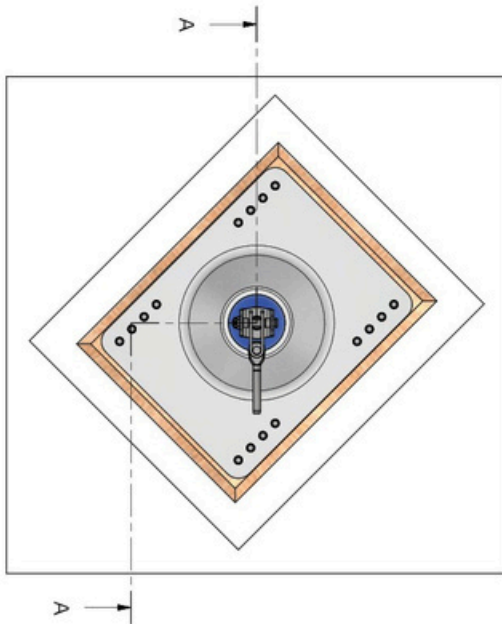
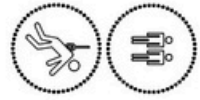


**Alta Safety Limited**

Unit 7, 2 Bealton Road,  
Socodem, Christchurch, 8042  
New Zealand 0300 13 945  
P: +64 3 385 0299  
altaafety.com

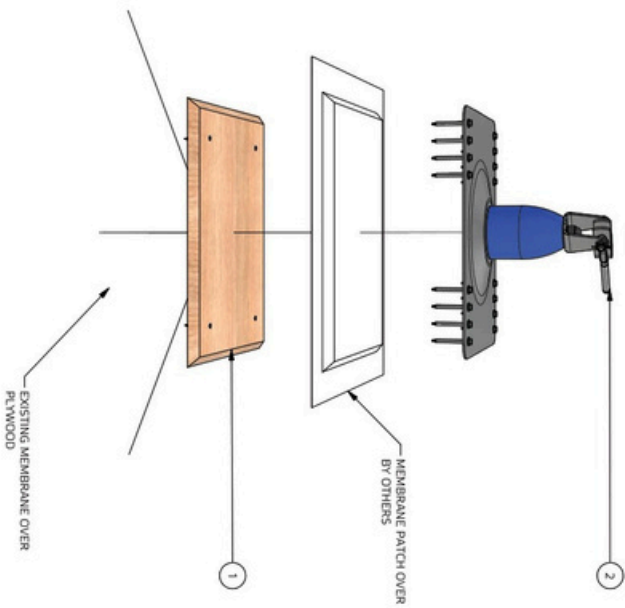
Client:	
Description:	Roofsafe Cable to BB900
Project Number:	
Project:	
Drawing Number:	Sheet Size
Drawn:	(A3)
Checked:	
Date:	Scale:

# TECHNICAL DRAWING – 3M RoofSafe™ Cable Plywood Plinth to Membrane on Plywood



SECTION A-A  
SCALE 1:7.5

PARTS LIST			DESCRIPTION
ITEM	QTY	PART NUMBER	
1	1	4000.07	PBI PLINTH PACK - SCREW
2	1	4000.07	RSC SCREW END NO TENSIONER



REVISION HISTORY			
REV	DESCRIPTION	DRAWN	DATE
A	FIRST ISSUE	ML	11/09/20

**NOTE:**

This product is designed, used, installed and maintained in accordance with supporting technical information and additional conditions. Cable system have been installed to comply with AS/NZS 1891.2:2018 Cable System is suitable for 2 persons **FORFALL ARRESTONLY**. Refer to PSI, Reading instruction manual prior to use is essential. To be installed by accredited person, Annual inspection & re-certification is required as per AS/NZS 1891.4:2009



Alta Safety Limited

Unit 7, 2 Bealton Road,  
Socodem, Christchurch 8042  
New Zealand (03) 351 9418  
P: +64 3 351 9289  
alta@altsafety.com

Client: \_\_\_\_\_

Description: Roofsafe cable on Plinth to Membrane to Plywood

Project Number: \_\_\_\_\_

Project: \_\_\_\_\_

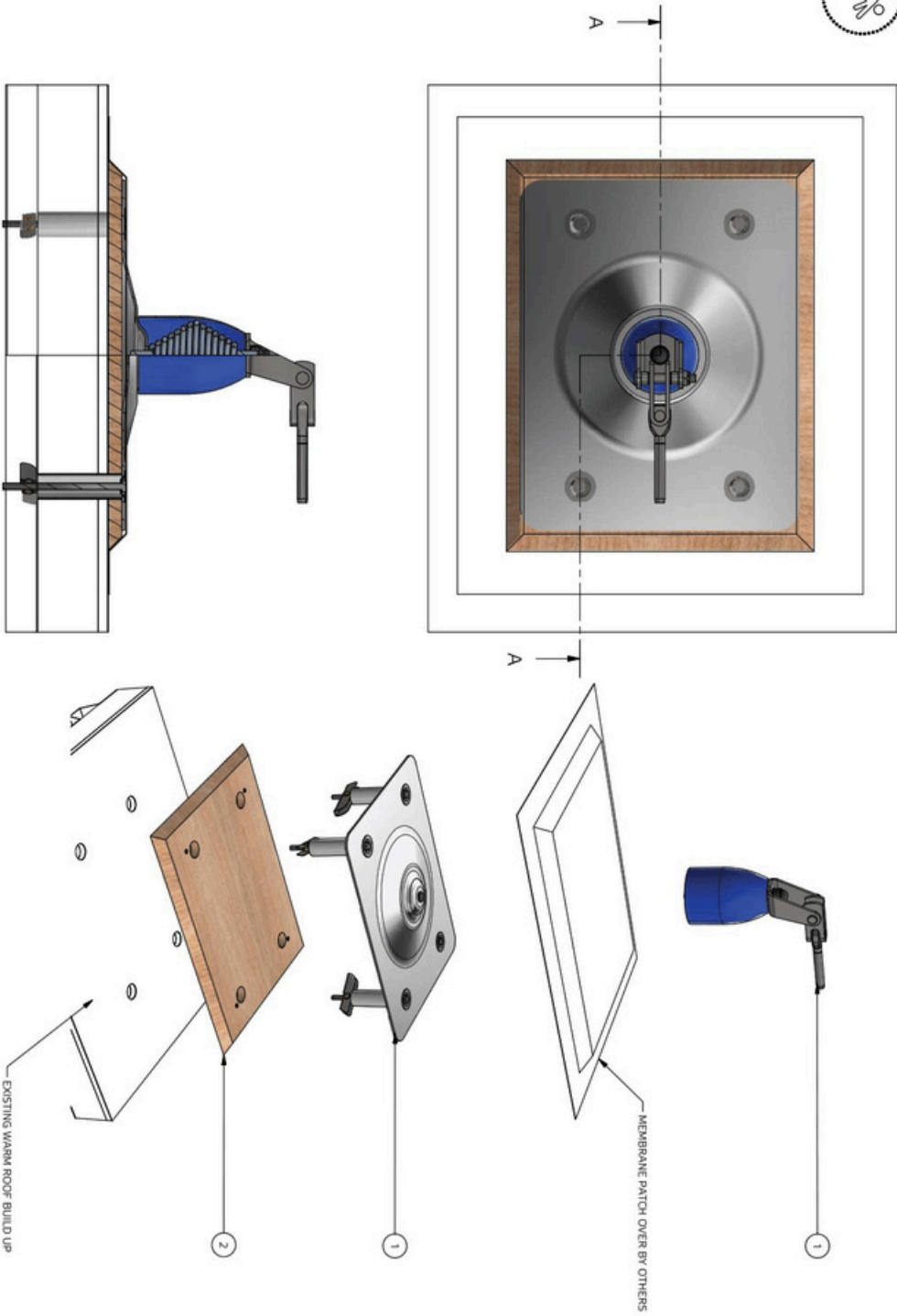
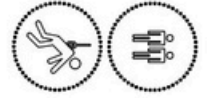
Drawing Number: \_\_\_\_\_ Sheet Size (A3)

Drawn: \_\_\_\_\_

Checked: \_\_\_\_\_

Date: \_\_\_\_\_ Scale: \_\_\_\_\_

# TECHNICAL DRAWING – 3M RoofSafe™ Cable Toggle fixed on Ply Plinth to Membrane on PIR on Metal Tray Substrate



**PARTS LIST**

ITEM	QTY	PART NUMBER	DESCRIPTION
1	1	400019	End No Tensioner PIR 150
2	1	400107	PIR PLINTH PACK - SCREW

**REVISION HISTORY**

REV	DESCRIPTION	DRWN	DATE
A	FIRST ISSUE	ML	11/09/20

**NOTE:**

This product is designed, used, installed and maintained in accordance with supporting technical information and additional conditions. Cable system have been installed to comply with AS/NZS 1891.2: 2018 Cable System is suitable for 2 persons **FOR FALL ARREST ONLY**. Refer to PFI, Reading instruction manual prior to use is essential. To be installed by accredited person. Annual inspection & re-certification is required as per AS/NZS 1891.4:2009



**Alta Safety Limited**  
 Unit 7, 2 Redbank Lane,  
 Sandstone, Queensland, 48842  
 Free Phone: 0800 115 818  
 P: +61 3 985 9529  
 alta@alta.com

**Client:**

**Description:** RSC toggle fixed on plinth to membrane on PIR to Metal Substrate

**Project Number:**

**Project:**

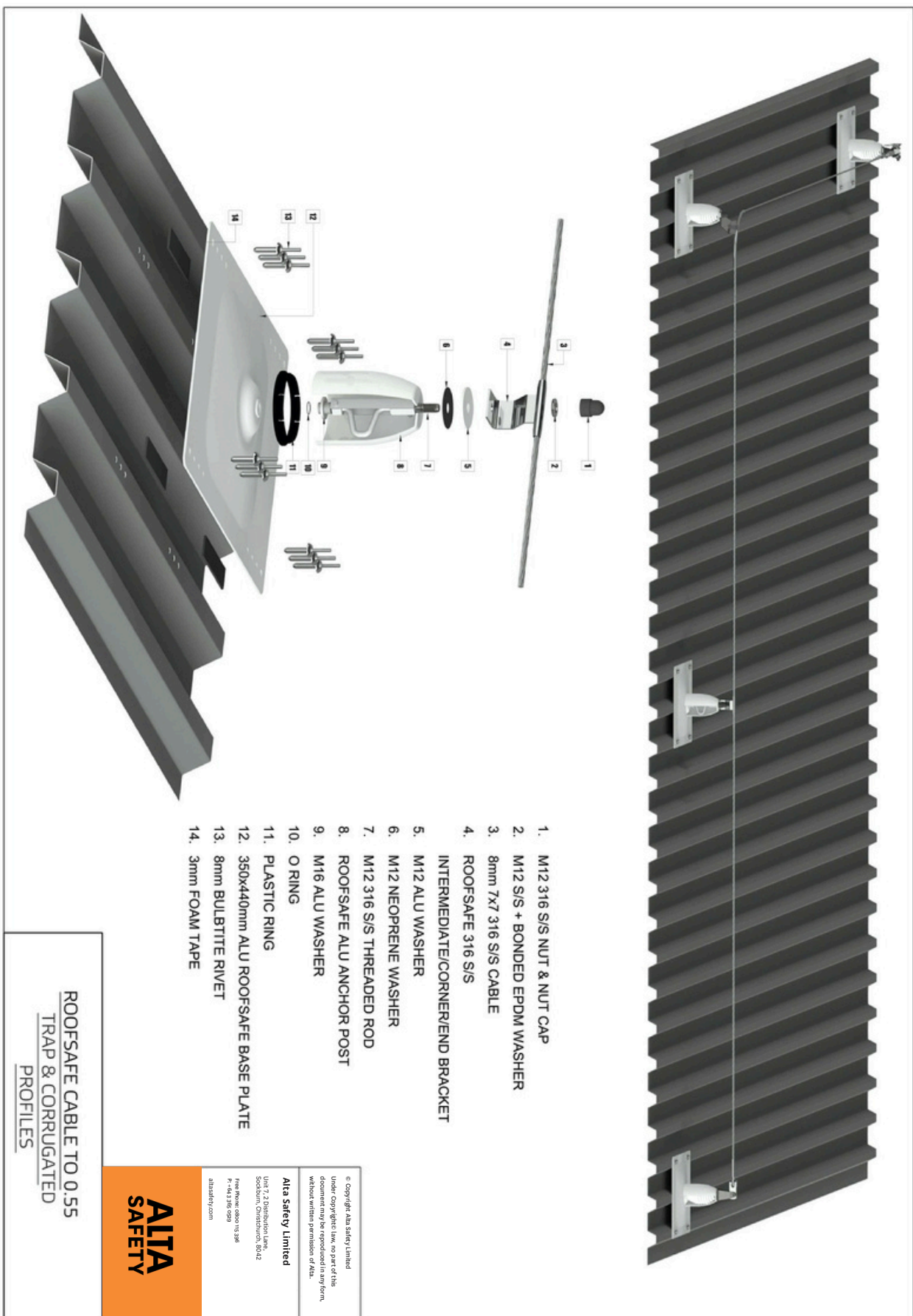
**Drawing Number:** Sheet Size (A3)

**Drawn:**

**Checked:**

**Date:** Scale:

**TECHNICAL DRAWING – 3M RoofSafe™ Cable to min 0.55mm trap & corrugated profiles**



## CHRISTCHURCH

Unit 7, 2 Distribution Lane,  
Sockburn, Christchurch 8042

## AUCKLAND

B7 / 930 Great South Road  
Penrose, Auckland  
1061

## WELLINGTON

Unit 8, 16 Jamaica Drive,  
Grenada North, Wellington 5028

[design@altasafety.com](mailto:design@altasafety.com)



## TECHNICAL DRAWINGS KEY



Rate to  
15kN



Person  
Capacity



Abseil



Fall Arrest



Restraint  
Technique