

3M

2101734

Abseil Anchor Point

A timber truss or steel purlin mounted roof anchor that is ideal for both residential and commercial applications.

The 2101734 anchor provides an economical solution for fall protection during the initial construction stage as well as future roof access and maintenance.

HOW IT IS USED

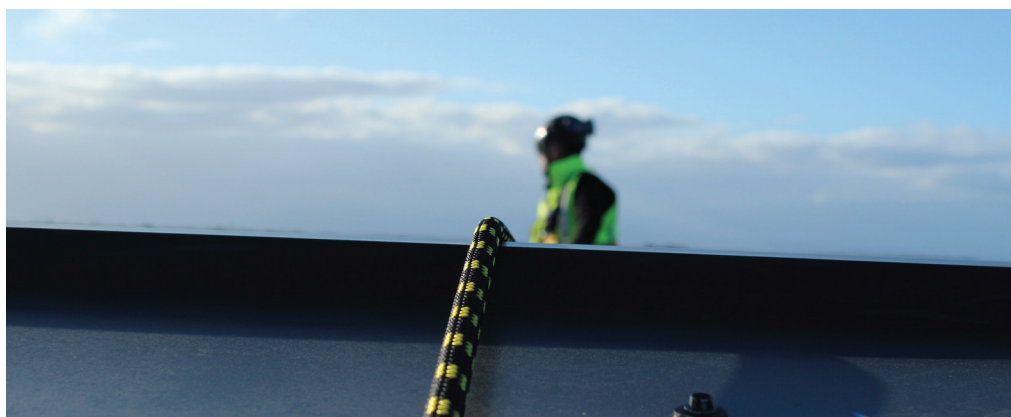
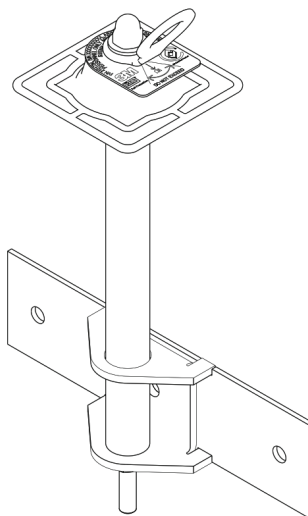
3M 2101734 anchor is designed to be installed to building roofs.

The anchors provide fall protection and abseil for Operatives doing a range of activities including roof wash downs, installing & maintaining HVAC air conditioning units, general maintenance or gutter cleaning.

The anchors are designed to support and hold a person in the event of a fall, and support a person for abseil access.

HOW IT WORKS

Large anchorage eye making connection quick and easy for the user. Load distributing design protects roof and user.





PERFORMANCE

Conforms to AS/NZS 1891.4:2009 - industrial fall-arrest systems and devices - Selection, use and maintenance, designed for and tested on most roof types, has been designed to withstand a 15kN load. All anchors are certified to the requirements of AS/NZS 5532 as a single person fall arrest anchor point able to sustain a force of 15kN.

INSTALLATION

Installation must be carried out by an accredited 3M Fall Protection Certified Technician, and in accordance with the manufacturer's installation instructions. Can be installed during roof construction or as a retrofit from the top of the roof surface.

MAINTENANCE

As per AS/NZS 1891.4 must be certified every 12 months by an Accredited 3M Fall Protection Certification technician. All of the exposed materials in the system have specified as naturally corrosion resistant, or have been coated with sacrificial coatings to prevent oxidation of the base material. It is important to consider that in some environments the system may need to be cleaned to gain the best possible life expectancy from the materials.



WARRANTY

3M™ warrants the 2101734 anchor and its component parts against factory defects in workmanship and materials for 10 years from its date of original purchase from 3M. Conditions that must be fulfilled include the system must be installed in accordance with 3M's installation instructions. The system is inspected in accordance with 3M's inspection instructions and annually recertified by a certified installer. Fixings must be tested at installation and then at least once a year and recorded in accordance with 3M's installation instructions. The system must be owned by the person making the warranty claim. The system has been properly used and maintained in accordance with its user instruction manual.

ENVIRONMENTAL

PBI Height Safety is committed to reducing its impact on the environment.

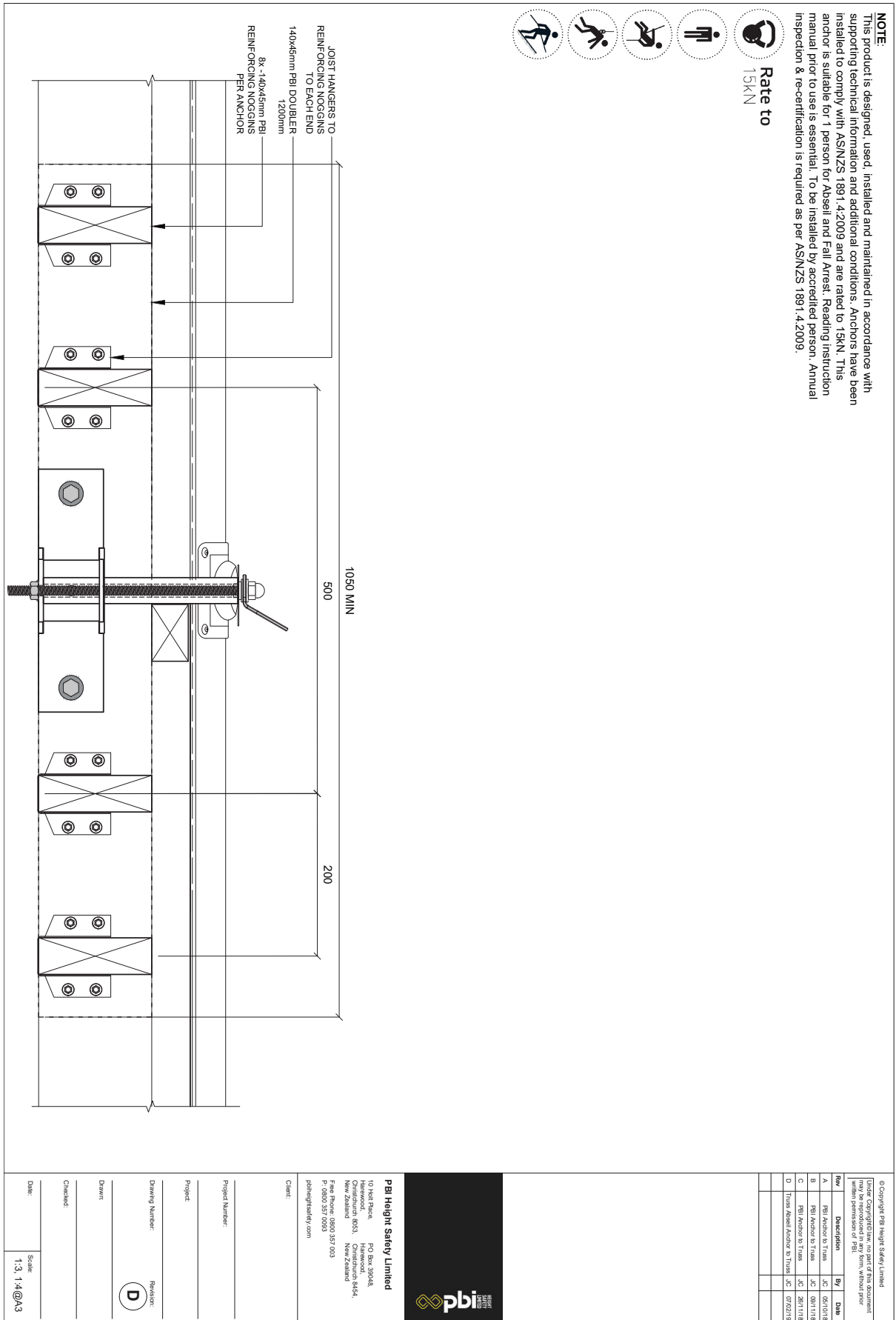
We will strive to improve our environmental performance over time and to initiate additional projects and activities that will further reduce our impacts on the environment.

Our commitment to the environment extends to our customers, our staff, and the community in which we operate. We are committed to supplying products with primary components made of recyclable material and is supplied with minimum packaging to retain its structure and integrity during transit.

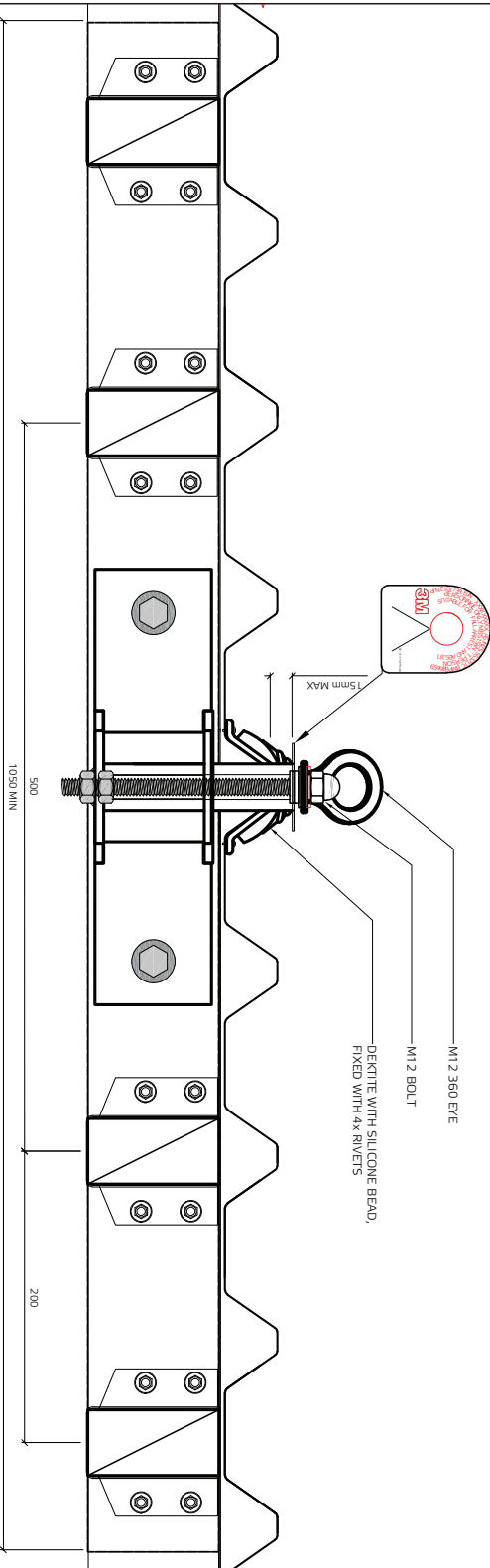
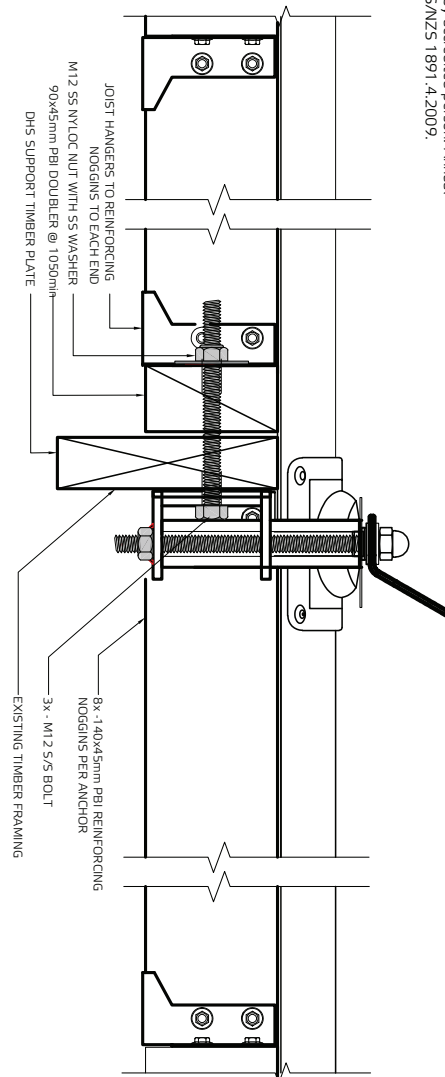
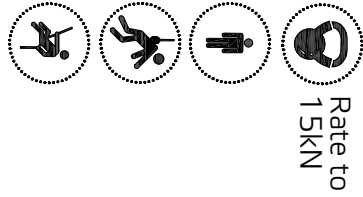
We will continually measure our environmental impacts and aim to reduce these impacts.



TECHNICAL DRAWING – 2101734 Abseil Anchor Point



NOTE: This product is designed, used, installed and maintained in accordance with supporting technical information at additional conditions. Anchors have been installed to comply with AS/NZS 1891.4:2009 and are rated to 15kN. This anchor is suitable for 1 person for Absell and Fall Arrest. Reading instruction manual prior to use is essential. To be installed by accredited person. Annual AS/NZS 8-re-certification is required as per AS/NZS 1891.4:2009.



© Copyright P81 Height Safety Limited

Under Copyright law, no part of this document may be reproduced in any form, without prior written permission of P81.

Rev	Description	By	Date
A	First Issue		

PBI Height Safety Limited
10 Hot Place,
Harewood,
Christchurch 8053,
New Zealand
Free Phone: 0800 357 003
P: 0800 357 0093
pbheightsafety.com

Project:

Description:

Abseil Anchor to Timber Framing

Project Number:

Client:

Drawing Number:

NEWBORN

A

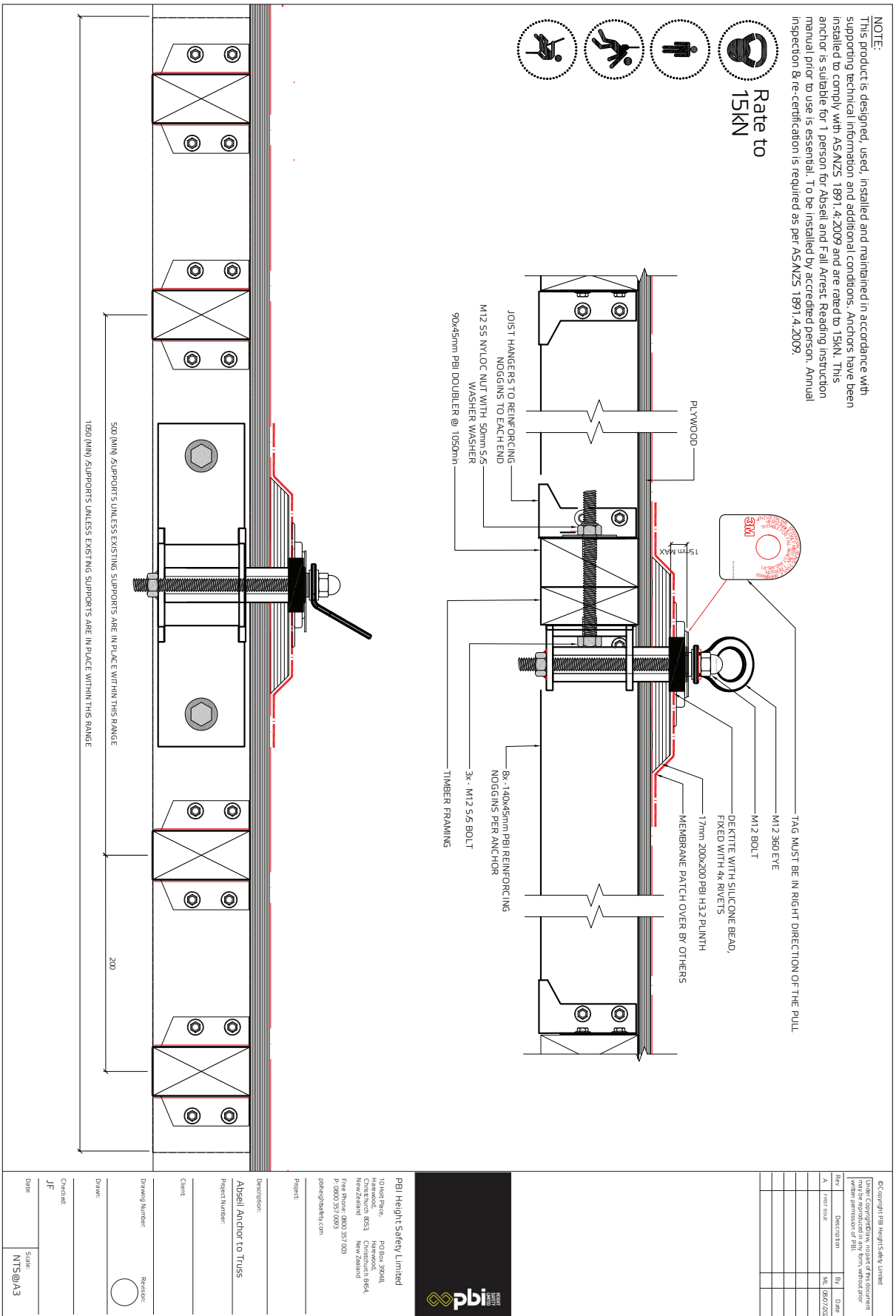
Drawn:

Checked

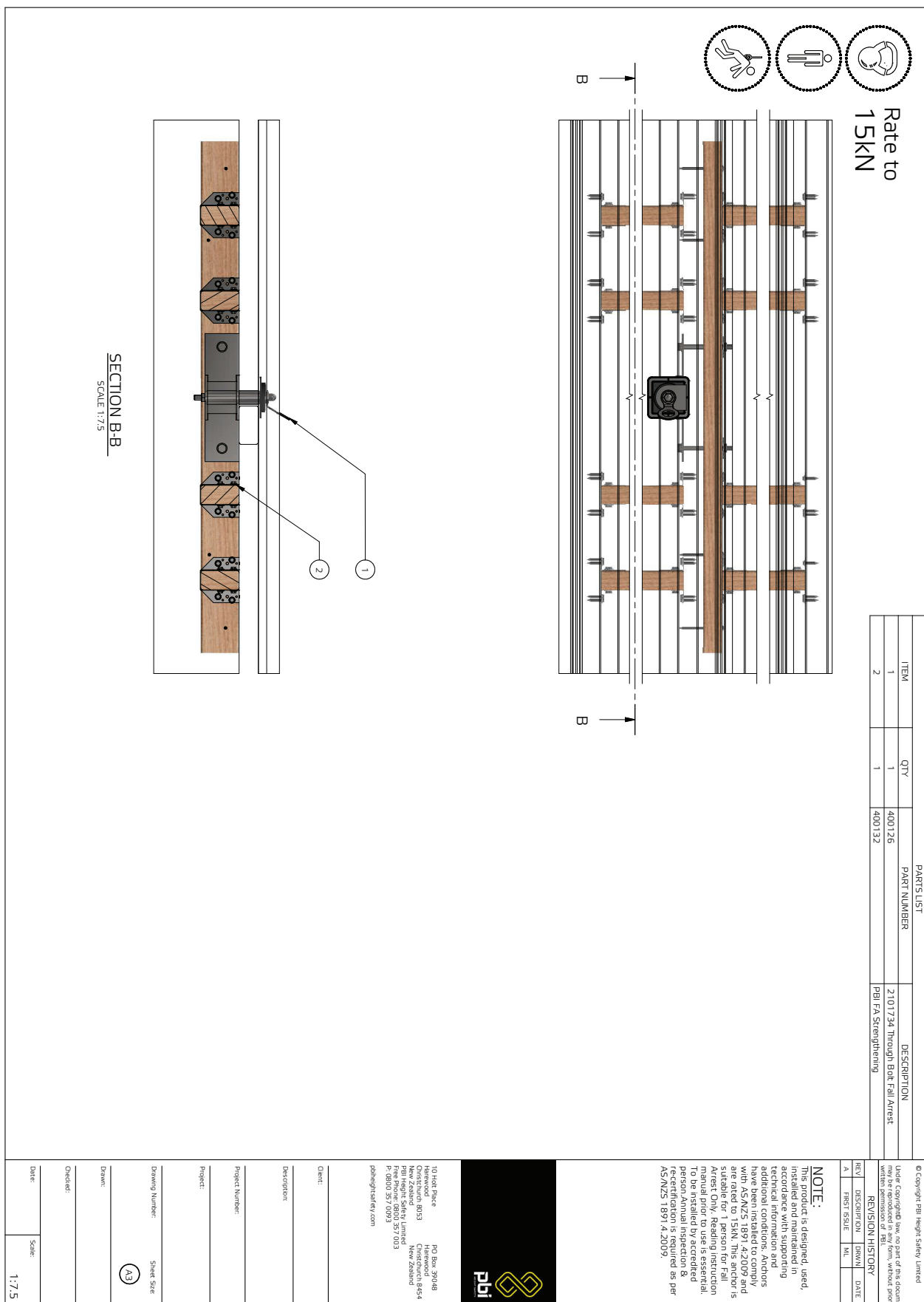
Date: _____ Scale: _____



TECHNICAL DRAWING – 2101734 Abseil Anchor Point to Truss & Plywood Roof



TECHNICAL DRAWING – 2101734 Abseil Anchor to Timber Substrate



PBI HEIGHT SAFETY

NEW ZEALAND OFFICES



CHRISTCHURCH

10 Holt Place
Harewood
Christchurch 8053

AUCKLAND

D23 / 930 Great South Road
Penrose
Auckland 1061

info@pbiheightsafety.com



TECHNICAL DRAWINGS KEY



Rate to
15kN



Person
Capacity



Abseil



Fall Arrest



Restraint
Technique