

3M 8MM HORIZONTAL Structurally Mounted Cable Static Line

A robust, structurally mounted, permanent 8mm Horizontal Lifeline (HLL) with a range of wall, roof and overhead application options.

Providing continuous attachment and full pass through design, the innovative traveller simply glides through the intermediate anchors ensuring no disconnection is required.

HOW IT IS USED

Targeted to meet the needs of transport and industrial applications. Can be mounted overhead, wall or floor level.

Specifically designed for work at height on trains, trucks, aircraft, crane walkways, loading bays and in the entertainment and stadium industry.

Supports heavy fall arrest, self-retracting lifelines and controlled rate descent devices up to 15kg - ensuring free and unhindered movement for workers when carrying out work at height.

Allows up to 60m single span for one user and up to 30m single span for multiple users.



HOW IT WORKS

3M 8mm HLL is designed to arrest a fall. High capacity energy absorbers ensure peak force is reduced in the event of a fall.

Allows users complete freedom of movement to carry out their work uninterrupted, in a continuous straight line and around corners.





PERFORMANCE

Conforms to AS/NZS 1891.2:2001- Industrial fall-arrest systems and devices - Horizontal lifeline and rail systems safety standards, AS/NZS 1891.4:2009 - industrial fall-arrest systems and devices - selection, use and maintenance.

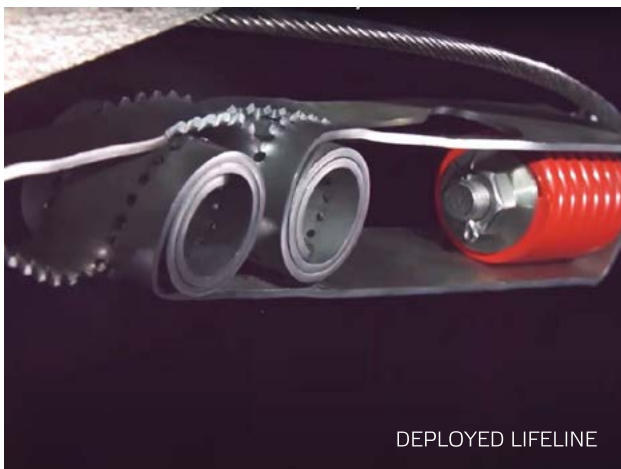
INSTALLATION

Installation must be carried out by an accredited 3M Fall Protection Certified Technician, and in accordance with the manufacturer's installation instructions.

3M proprietary software is used to help calculate load and aid in design.

MAINTENANCE

As per AS/NZS 1891.4 - 3M 8mm HLL must be certified every 12 months by an accredited 3M Fall Protection Certification technician. All of the exposed materials in the system have specified as naturally corrosion resistant, or have been coated with sacrificial coatings to prevent oxidation of the base material. It is important to consider that in some environments the system may need to be cleaned to gain the best possible life expectancy from the materials.



DEPLOYED LIFELINE



WARRANTY

3M™ warrants the 8mm Horizontal Lifeline (HLL) Safety System "the system" and its component parts against factory defects in workmanship and materials for 10 years from its date of original purchase from 3M. The system must be installed in accordance with 3M's installation instructions. The system is inspected in accordance with 3M's inspection instructions and annually recertified by a certified installer. Fixings must be tested at installation and then at least once a year and recorded in accordance with 3M's installation instructions. The system must be owned by the person making the warranty claim. The system has been properly used and maintained in accordance with its user Instruction Manual.

ENVIRONMENTAL

PBI Height Safety is committed to reducing its impact on the environment.

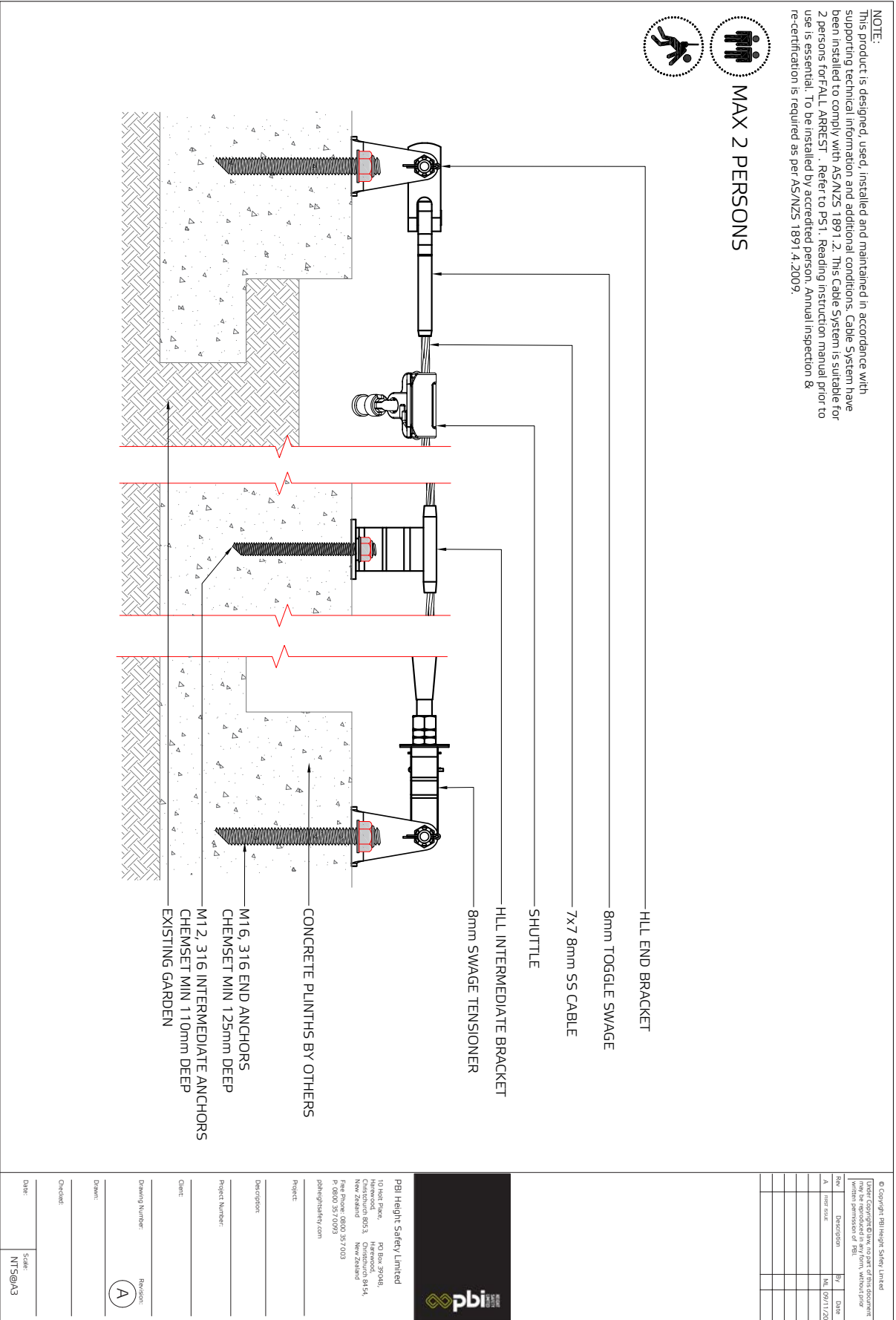
We will strive to improve our environmental performance over time and to initiate additional projects and activities that will further reduce our impacts on the environment.

Our commitment to the environment extends to our customers, our staff, and the community in which we operate. We are committed to supplying products with primary components made of recyclable material and is supplied with minimum packaging to retain its structure and integrity during transit.

We will continually measure our environmental impacts and aim to reduce these impacts.



TECHNICAL DRAWING – HLL Cable to Concrete Plinth





TECHNICAL DRAWING – HLL Cable System Structurally Mounted

MAX 2 PERSONS

SECTION AA
SCALE: 1:3

PARTS LIST

ITEM	QTY	PART NUMBER	DESCRIPTION
1	1	400365	End Straight Eye Wall/Floor Mount Hex Swage Stud Pass Through 150
2	1	400000	HSC Cable 8mm 7x7 Cable

NOTE:
This product is designed, used, installed and maintained in accordance with supporting technical information and instructions. The HLL Cable System has been installed to comply with AS/NZS 1891.2. This Cable System is suitable for 2 persons for FALL ARREST ONLY. Refer to P51. Reading is essential. To be installed by accredited person. Annual inspection & recertification is required as per AS/NZS 1891.4:2009.

REVISION HISTORY

REV	DESCRIPTION	ISSUED	DATE
A	FIRST ISSUE	NL	

CLIENT: _____
DESCRIPTION: _____
PROJECT NUMBER: _____
PROJECT: _____
DRAWING NUMBER: _____
DATE: _____

10 Lock Place
 Christchurch 8013
 New Zealand
 Free Phone: 0800 357 003
 P: 0800 357 0093
 pbiheightsafety.com

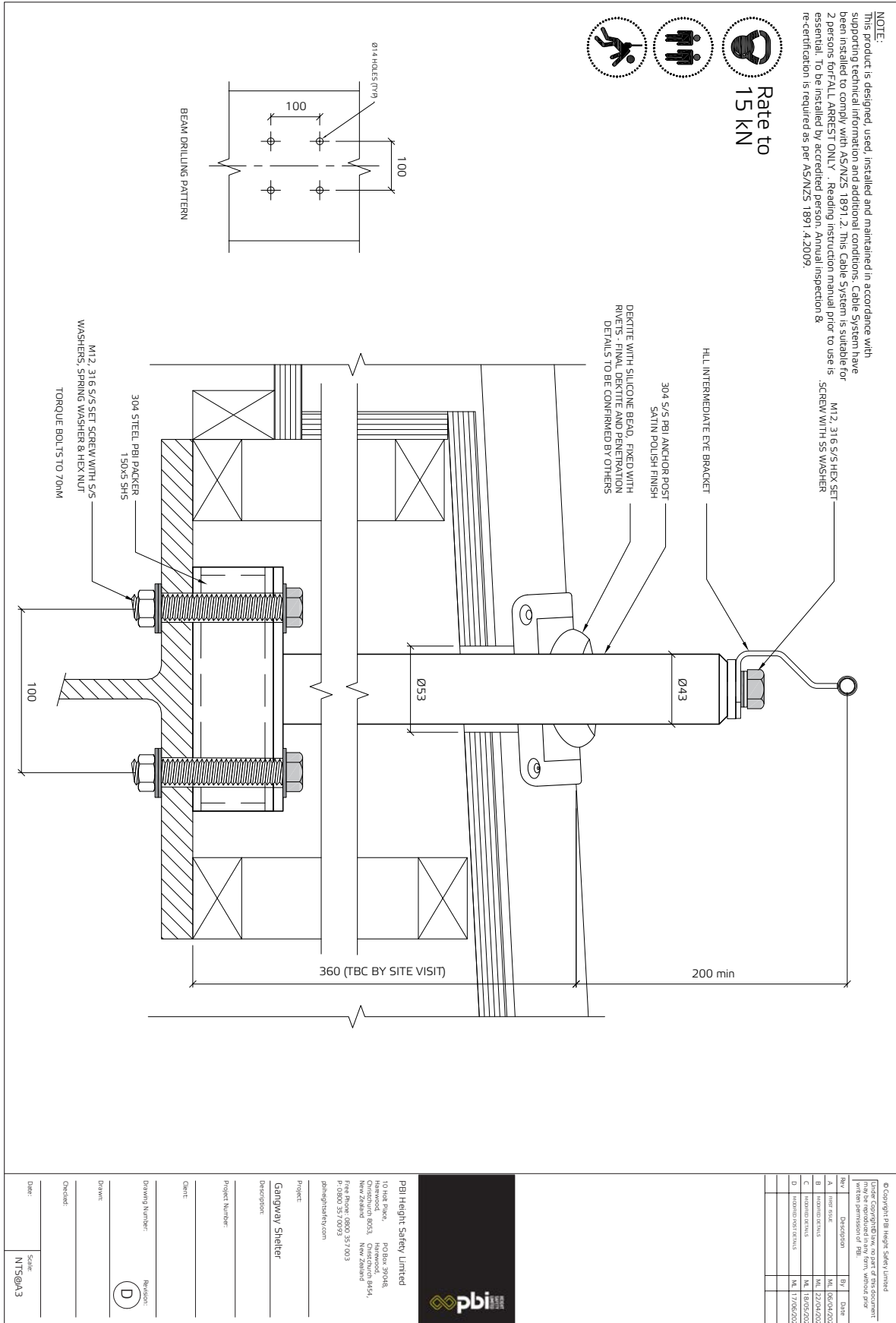
P.O. Box 39048
 Christchurch 8154
 New Zealand
 Free Phone: 0800 357 003
 P: 0800 357 0093
 pbiheightsafety.com

Checked: _____
Drawn: _____
Scale: 1:3

Sheet Size: **A3**



TECHNICAL DRAWING – HLL Cable System Intermediate Post Detail





TECHNICAL DRAWING – HLL Cable System End & Corner Post Detail

NOTE:
 This product is designed, used, installed and maintained in accordance with supporting technical information and additional conditions. Cable System have been installed to comply with AS/NZS 1891.2. This Cable System is suitable for 2 persons for FALL ARREST ONLY. Reading instruction manual prior to use is essential. To be installed by accredited person. Annual inspection & re-certification is required as per AS/NZS 1891.4:2009.

**Rate to
22kN**

**BEAM ADDITIONAL RAISED DETAIL (Ø118-Ø4) IN 2 PLACES FOR:
GRID B BETWEEN 3 & 4
GRID A BETWEEN 8 & 10**

**BEAM DRILLING PATTERN IN 2 PLACES FOR:
GRID B BETWEEN 10 & 11
GRID A BETWEEN 2 & 3**

Labels:
 Ø18 HOLES (TYP)
 140
 304 S/S END ANCHOR POST
 SCH 40 BUNB SATIN POLISH FINISH
 280mm MAX HEIGHT
 DEKITE WITH SILICONE BEAD, FIXED WITH RIVETS -
 FINAL DEKITE AND PENETRATION DETAIL TO BE
 CONFIRMED BY OTHERS
 M12, 316 HEX SET SCREW
 WITH S5 WASHER
 HLL END EYE / CORNER BRACKET
 Ø104
 200 min
 100 (TBC ON SITE)
 M16, 316 S/S SET SCREW WITH S/S
 WASHERS, SPRING WASHER & HEX NUT
 TORQUE BOLTS TO 170NM
 140

Rev	Description	By	Date
A	Issue Issue	ML	16/04/2020
B	Issue Revisions	ML	22/04/2020
C	Issue Revisions	ML	18/05/2020

© Copyright PBI Height Safety Limited
 (may be redrafted as part of this document
 without permission of PBI)

PBI Height Safety Limited
 10 Red Pike, PO Box 39348,
 Christchurch 8003, New Zealand
 Fax: 03 357 0033
 P: 0800 357 0073
 pbiheightsafety.com

Project: _____
Description: _____
Project Number: _____
Client: _____
Drawing Number: _____
Revised:

Drawn: _____
Checked: _____
Date: _____
Scale: NTS@A3

PBI HEIGHT SAFETY

NEW ZEALAND OFFICES



CHRISTCHURCH
10 Holt Place
Harewood
Christchurch 8053

AUCKLAND
D23 / 930 Great South Road
Penrose
Auckland 1061

info@pbiheightsafety.com



TECHNICAL DRAWINGS KEY



Rate to
15kN



Person
Capacity



Abseil



Fall Arrest



Restraint
Technique