

BOMAC

Altrac
Overhead Aluminium
Rail Abseil System

A system designed for overhead abseiling fall protection; it is extremely versatile, lightweight, low-maintenance and aesthetically pleasing.

There are many applications for this product; maintenance of trucks, trains, aeroplanes, internal and external glass/atrium cleaning and more.



HOW IT IS USED

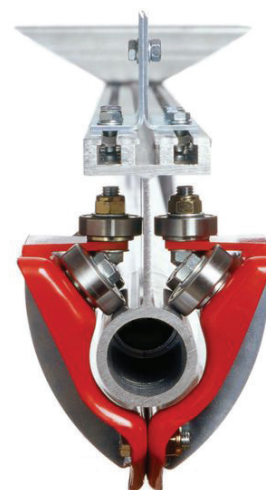
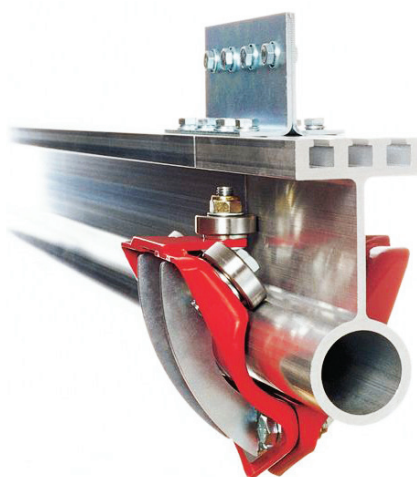
Provides security for those who work at height, by providing a reliable and safe abseil system. Altrac accommodates multiple users without displacement. The permanently fixed trolleys provide smooth uninterrupted access along the length of the rail.

Altrac is used by hundreds of organisations around the globe, in industries as diverse as manufacturing, tourism, education and construction.

HOW IT WORKS

T slots on the top face of the extrusion allow for a wide range of mounting options to cater for variations in heights, lengths and angles. The circular rolling

track section does not become contaminated by the build-up of dirt, dust or foreign matter and can be easily inspected and cleaned as required.





PERFORMANCE

Conforms to AS/NZS 1891.2:2001 - Industrial fall-arrest systems and devices - Horizontal lifeline and rail systems, AS/NZS 1891.4:2009 - industrial fall-arrest systems and devices - selection, use and maintenance, AS/NZS 4488.2:1997 Industrial Rope Access Systems - selection use and maintenance.

INSTALLATION

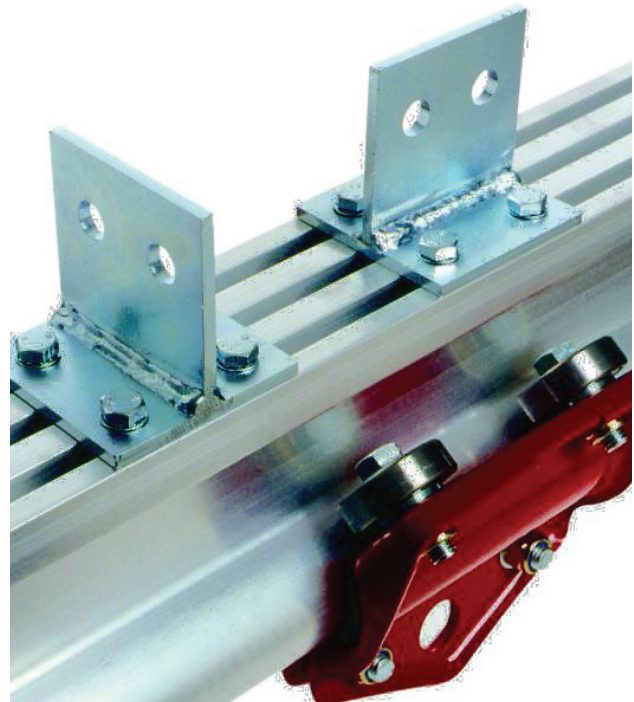
Installation should be carried out by a manufacturer trained technician who is familiar with the parameters of fall arrest and abseil systems.

MAINTENANCE

As per AS/NZS 1891.4 Bomac Altrac must be certified every 12 months by a qualified height safety equipment inspector. All of the exposed materials in the system have specified as naturally corrosion resistant, or have been coated with sacrificial coatings to prevent oxidation of the base material. It is important to consider that in some environments the system may need to be cleaned to gain the best possible life expectancy from the materials.

WARRANTY

Bomac Altrac system overhead rail system has a product warranty of 10 years from the date of installation. The warranty is invalidated if inspections are not maintained every 12 months by a qualified height safety system equipment inspector.



ENVIRONMENTAL

PBI Height Safety is committed to reducing its impact on the environment.

We will strive to improve our environmental performance over time and to initiate additional projects and activities that will further reduce our impacts on the environment.

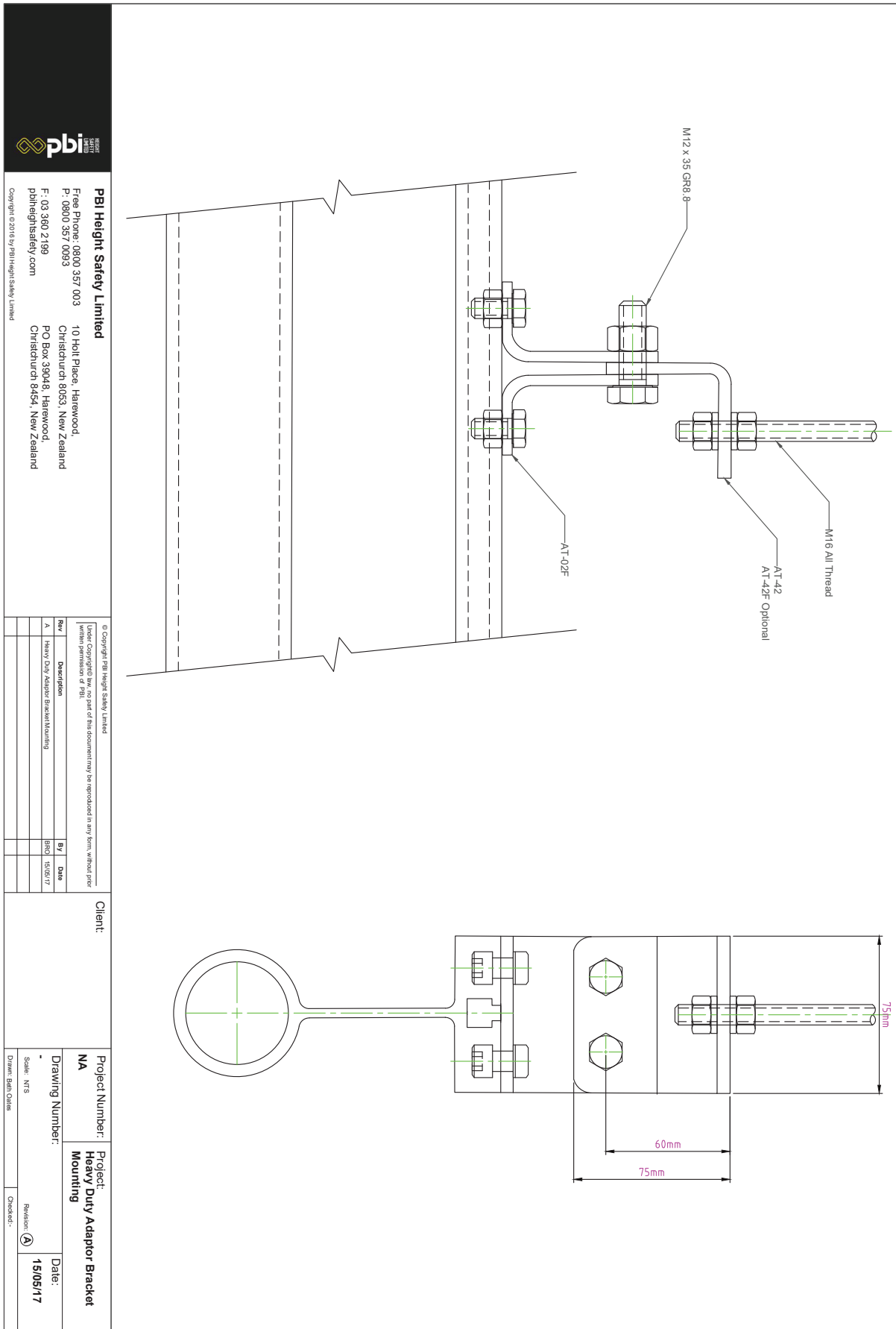
Our commitment to the environment extends to our customers, our staff, and the community in which we operate. We are committed to supplying products with primary components made of recyclable material and supplied with minimum packaging to retain its structure and integrity during transit.

We will continually measure our environmental impacts and aim to reduce these impacts.





TECHNICAL DRAWING – Bomac Altrac Heavy Duty Adaptor Bracket Mounting





© Copyright FBI Height Safety Limited

Under Copyrighted law, no part of this document may be reproduced in any form, without prior written permission of FBI.

REVISION HISTORY			
REV	DESCRIPTION	DRAWN	DATE
1	FIRST ISSUE	ML	19/08/20



pbi
REPORT SAFETY LIMITED

portheightsafety.com

Description

Description

Project

A3

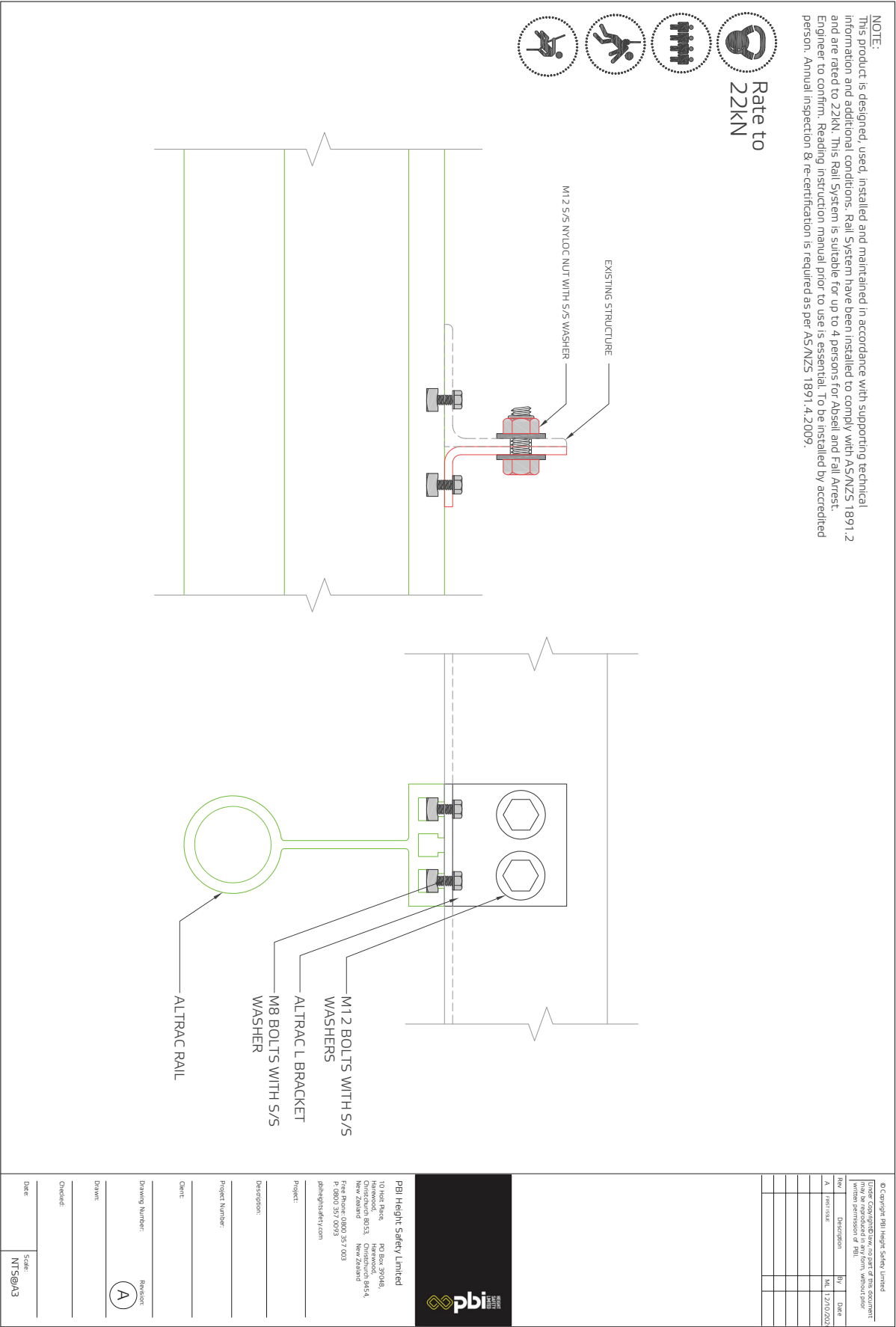
Checke

Checked:

Scale:
1:5



TECHNICAL DRAWING – Bomac Altrac to EA Steel



PBI HEIGHT SAFETY

NEW ZEALAND OFFICES



CHRISTCHURCH

10 Holt Place
Harewood
Christchurch 8053

AUCKLAND

D23 / 930 Great South Road
Penrose
Auckland 1061

info@pbiheightsafety.com



TECHNICAL DRAWINGS KEY



Rate to
15kN



Person
Capacity



Abseil



Fall Arrest



Restraint
Technique