

3M ROOFSAFE™ Surface Mounted Aluminium Rail Static Line

3M RoofSafe™ Rail is a high quality, aluminium rail safety system suited for all building projects and maintenance.

A proprietary system attaches directly to the roof sheeting. The 3M RoofSafe™ Rail system offers exceptional functionality due to the innovative hands free traveler, is capable of navigating corners, changes direction and roof slopes, ensuring continuous safe roof access plus providing complete design flexibility.



HOW IT IS USED

RoofSafe™ Rail's discrete low-profile design provides an unobtrusive safety anchorage solution, ensuring a building's appearance is not spoilt by highly visible anchor points and cables.

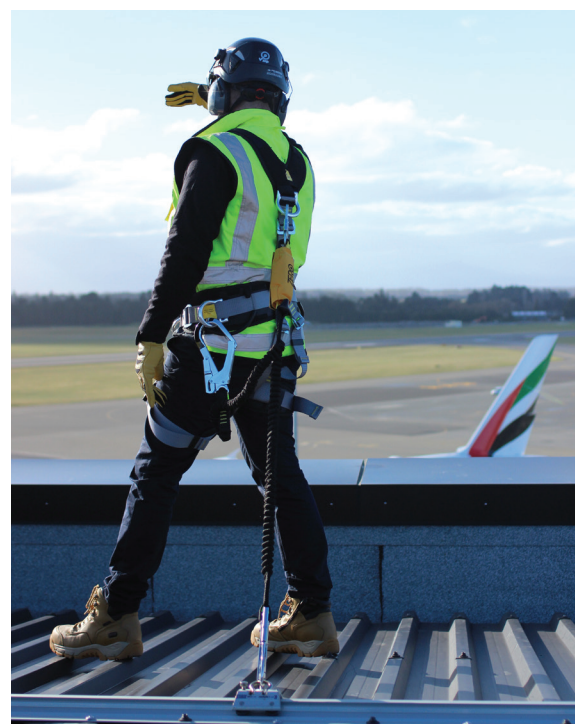
RoofSafe™ Rail provides a safety anchorage system for multiple users, allowing more complex maintenance tasks to be undertaken in an efficient manner, including suspended rope access work.

HOW IT WORKS

RoofSafe™ Rail is designed to be fixed directly to metal roof sheeting.

Even load distribution through the fixing system ensures complete safety in the event of a single user fall without damaging the integrity of the roof system.

The solid nature of the anchorage ensures no deflection or unnecessary loading of anchor points during use and makes the system especially beneficial on roofs with a pitch of more than 15 degrees.





PERFORMANCE

Conforms to AS/NZS 1891.2:2001 - Industrial fall-arrest systems and devices - Horizontal lifeline and rail systems, AS/NZS 1891.4:2009 - industrial fall-arrest systems and devices - Selection, use and maintenance, AS/NZS 4488.2:1997 Industrial Rope Access Systems - selection use and maintenance. designed for and tested on most roof types, has been designed to withstand a 15kN load.

INSTALLATION

Installation must be carried out by an Accredited 3M Fall Protection Certified Technician, and in accordance with the manufacturer's installation instructions for service mounted systems. Metal roofs must have a minimum BMT of 0.42mm, aluminium roofs must have a minimum BMT of 0.90mm.

MAINTENANCE

As per AS/NZS 1891.4 RoofSafe™ Rail must be certified every 12 months by an Accredited 3M Fall Protection Certification technician. All of the exposed materials in the system have specified as naturally corrosion resistant, or have been coated with sacrificial coatings to prevent oxidation of the base material. It is important to consider that in some environments the system may need to be cleaned to gain the best possible life expectancy from the materials.



WARRANTY

RoofSafe™ Rail system has a product warranty of 10 years from the date of installation. The warranty is invalidated if inspections are not maintained every 12 months by an Accredited 3M Fall Protection Certification Technician.

This warranty does not cover Equipment damage resulting from wear, abuse, damage in transit, failure to maintain the product or other damage beyond the control of 3M.

When installed in harsh conditions, e.g. in wet, dusty, abrasive, or corrosive environments, (near the ocean for example), the system shall be inspected more frequently at twice the frequency (6-monthly).

ENVIRONMENTAL

PBI Height Safety is committed to reducing its impact on the environment.

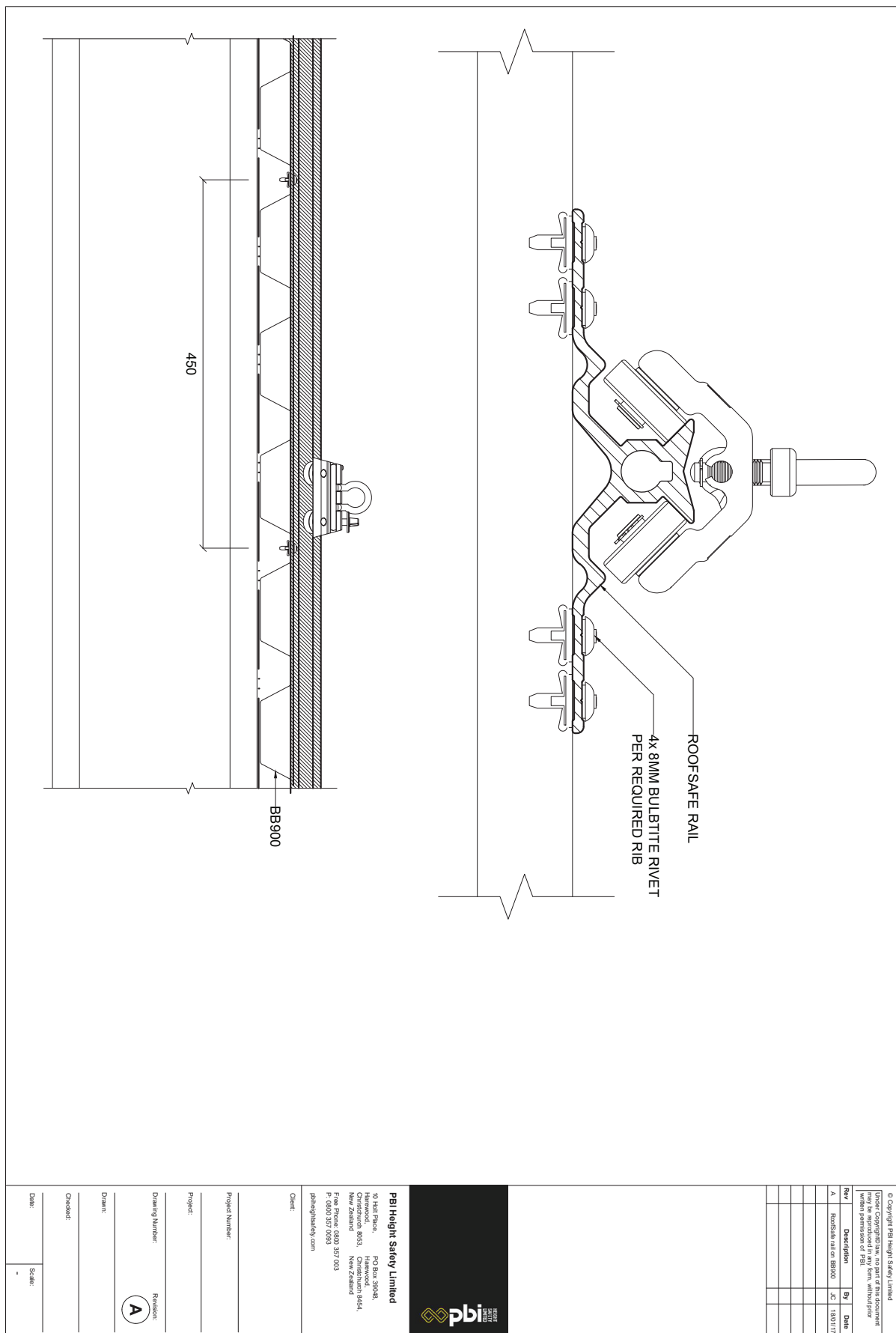
We will strive to improve our environmental performance over time and to initiate additional projects and activities that will further reduce our impacts on the environment.

Our commitment to the environment extends to our customers, our staff, and the community in which we operate. We are committed to supplying products with primary components made of recyclable material and is supplied with minimum packaging to retain its structure and integrity during transit.

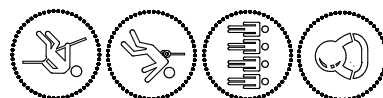
We will continually measure our environmental impacts and aim to reduce these impacts.



TECHNICAL DRAWING – 3M RoofSafe™ Rail to BB900

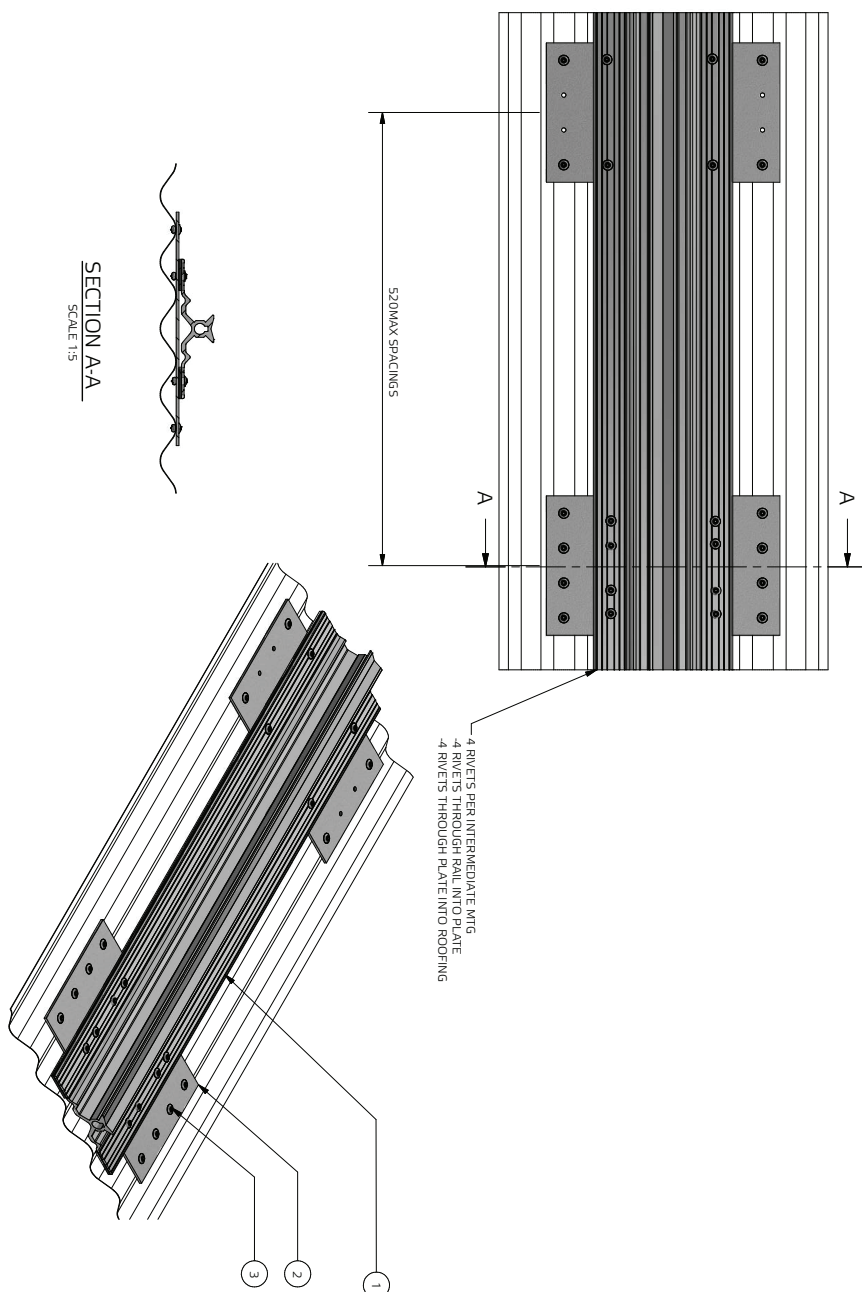


TECHNICAL DRAWING – 3M RoofSafe™ Rail to Corrugate



Rate to
15kN
per 3m Rail Section

Multiple users per system
Single person per 3m Rail Section



PARTS LIST		
ITEM	PART NUMBER	DESCRIPTION
1	400179	Roofsafe Rail - Abel - Intermediate 3000
2	41001-01	SPREADER PLATE, ROOFSAFE RAIL M/T
3	41006-01	8mm BULBRITE INVT - ALU

© Copyright PBI Height Safety Limited

Under Copyrighted law, no part of this document may be reproduced in any form, without prior written permission of PBI.

REVISION HISTORY		
REV	DESCRIPTION	DATE
A	FIRST ISSUE	ML

NOTE:

This product is designed, used, installed and maintained in accordance with supporting technical information and additional conditions. Rail System have been installed to comply with AS/NZS 1891.2. This Rail is suitable for multiple purposes for Alert and Fail however only the entire system, however only suitable for 1 person per 3m Rail Section. Refer to SS1, Reading instruction manual prior to use is essential. To be installed by 3M accredited personnel only, Annual inspection & recertification is required per AS/NZS 1891.4:2005, by 3M accredited Person only.



10 Hot Place
Harewood
Christchurch 8053
New Zealand
P BI Height Safety United
Free Phone: 0800 357 003
P: 0800 357 0093
pbheightsafety.com

Client:
Description:

Project Number: _____

Project: _____

Drawing Number: Sheet Size:

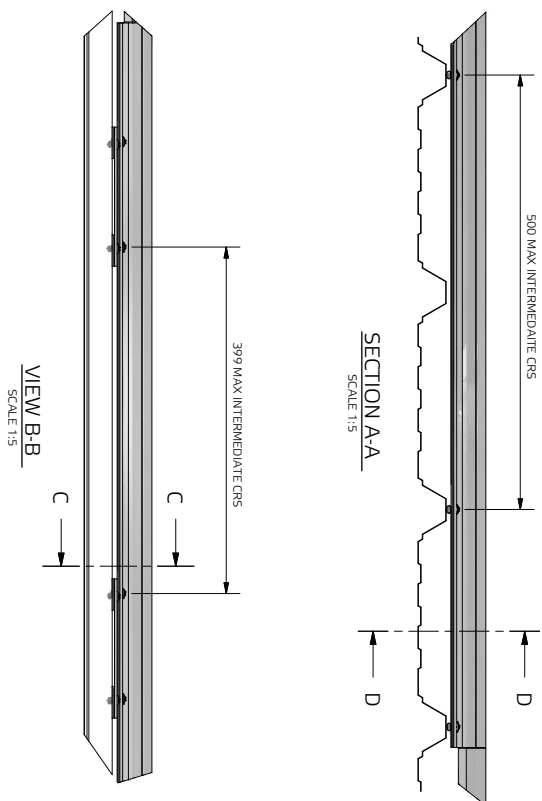
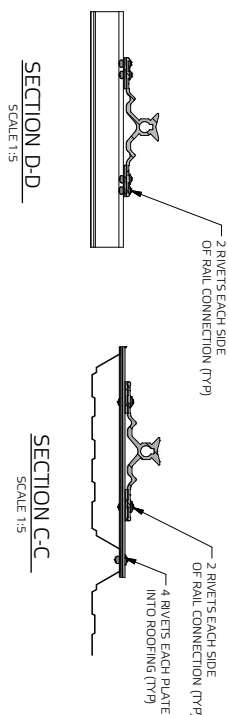
Drawn:

Checked: _____

Date	Scale
------	-------

15kN per 3m Rail Section

Multiple Users per System Single Person per 3m Rail Section



PARTS LIST			
ITEM	PART NUMBER	DESCRIPTION	
1	4401178	End 3000 with Plunger Stop	
2	4401179	Roofsate Rail - Absel - Intermediate 3000	
3	1410010	SPREADER PLATE, ROOFSE RAIL M/TG	
4	420090	90° x 200 Corner - overhead / floor	
5	420137	FOAM STRIP	
6	420161	Brm BLUETTE RIVET -ALU	

© Copyright FBI Heigts Safety Limited

Under Copyright law, no part of this document may be reproduced, stored in a retrieval system, or transmitted, in any form or by any means, without prior written permission of FBI Heigts Safety Limited

REVISION HISTORY			
REV	DESCRIPTION	ISSN	DATE
A	FIRST ISSUE	ML	

NOTE: This product is designed to meet

© Copyright 1981 Integrity Safety Limited

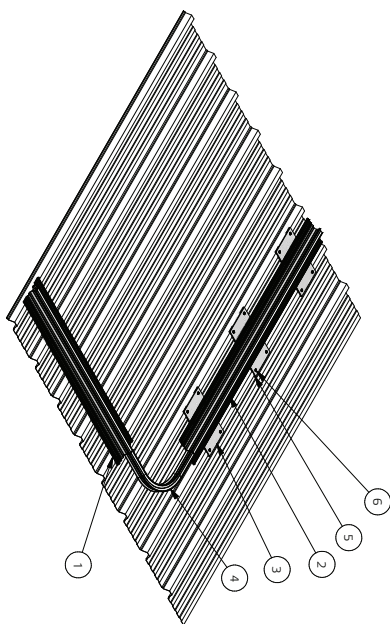
Under Copyrighted law, no part of this document may be reproduced, stored in a retrieval system, or transmitted in any form or by any means, electronic, mechanical, photocopying, recording, or by any information storage or retrieval system, without the prior written permission of Integrity Safety Limited.

REVISION HISTORY


REV	DESCRIPTION	REVW	DATE
A	FIRST ISSUE	ML	

NOTE:

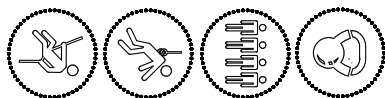
This product is designed, used, installed and maintained in accordance with supporting technical information and additional conditions. Full System conditions apply to all systems, regardless of the version which is installed. The following conditions are applicable to all systems, but are not suitable for multiple persons for Absbel and Full range over the entire system, however only suitable for 1 person per Rail Section. Refer to p51, Reading Section. It is essential that the system is essential. To be installed by a competent person only. Annual inspection & re-certification is required as per AS/NZS 1591.4, 1981, by a 3M accredited person only.



10 Holt Place
Harewood
Christchurch 8013
New Zealand
PBI Hinge Safety Limited
Free Phone: 0800 357 003
P: 0800 357 0093
pbihinge@safety.com

Client	
Description	
Project Number	
Project	
Drawing Number	Sheet Size
	
Drawn	
Checked	
Date	Scale

TECHNICAL DRAWING – 3M RoofSafe™ Rail to BB900 .55bmt



Rate to
15kN
per 3m Rail Section

Multiple Users per System Single Person per 3m Rail Section

PARTS LIST		
ITEM	QTY	DESCRIPTION
1	1	400178 End 3000 with Plunger Stop

<p>Under Copyright © law, no part of this document may be reproduced in any form, without prior written permission of PBI.</p>			
<p>© Copyright PBI Height Safety Limited</p>			
<p>REVISION HISTORY</p>			
REV	DESCRIPTION	DRAWN	DATE
A	FIRST ISSUE	ML	

NOTE:

This product is designed, used, installed and maintained in accordance with supporting technical information and additional conditions. Rail System have been installed to comply with AS/NZS 1891.2. This Rail is suitable for multiple persons for Abseil and Fall Arrest over the entire system, however only one person is permitted to be suitable for 1 person per 3m Rail Section. Refer to P51, Reading instruction manual prior to use is essential. To be installed by 3M accredited personnel only. Annual inspection & recertification is required per AS/NZS 1891.2, 2009, by a 3M accredited Person only.



10 Holt Place
Harewood
Christchurch 8053
New Zealand
PBI Height Safety Limited
Free Phone: 0800 357 003
P: 0800 357 0093
pbheightsafety.com

Client: _____

Description: _____

Project Number: _____

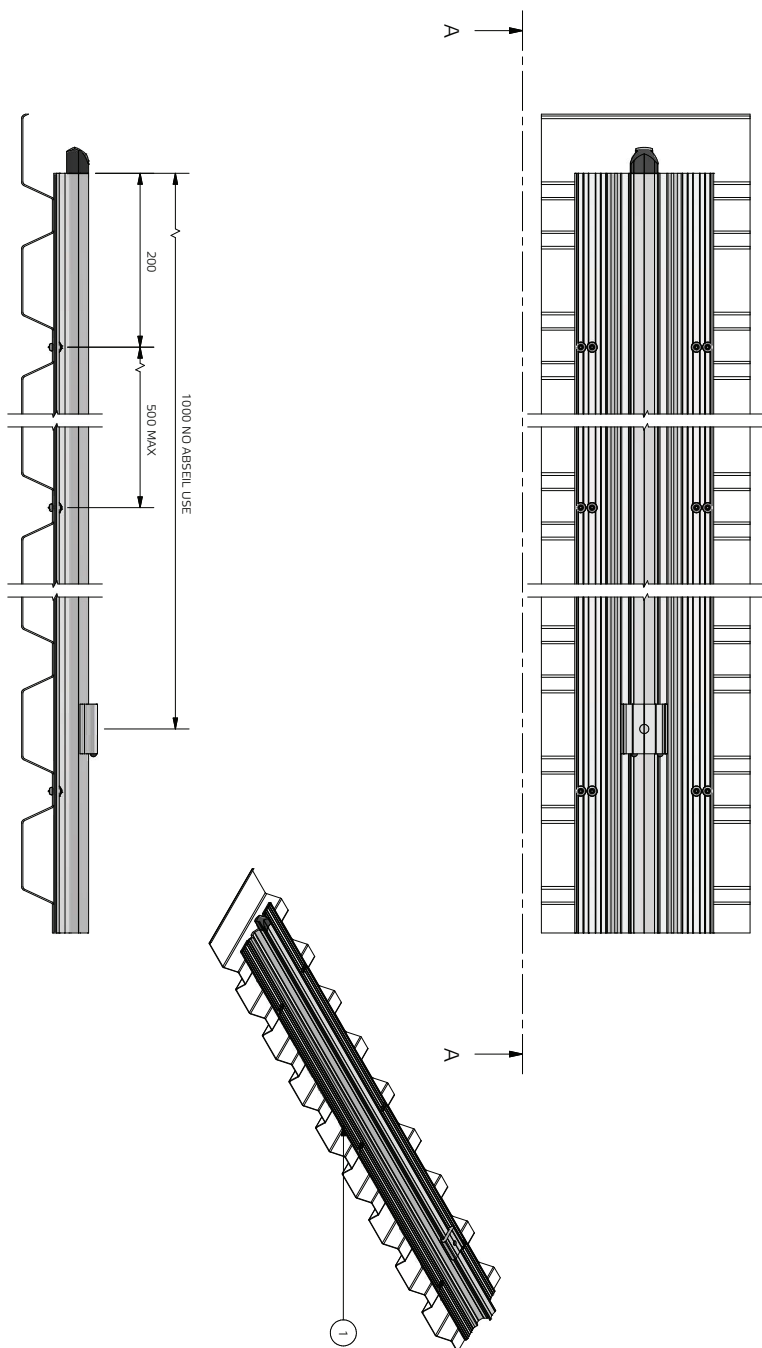
Project:

Drawing Number: Sheet Size:

Drawn:

Checked:

Date: _____ Scale: _____



VIEW A-A
SCALE 1:5

PBI HEIGHT SAFETY

NEW ZEALAND OFFICES



CHRISTCHURCH

10 Holt Place
Harewood
Christchurch 8053

AUCKLAND

D23 / 930 Great South Road
Penrose
Auckland 1061

info@pbiheightsafety.com



TECHNICAL DRAWINGS KEY



Rate to
15kN



Person
Capacity



Abseil



Fall Arrest



Restraint
Technique