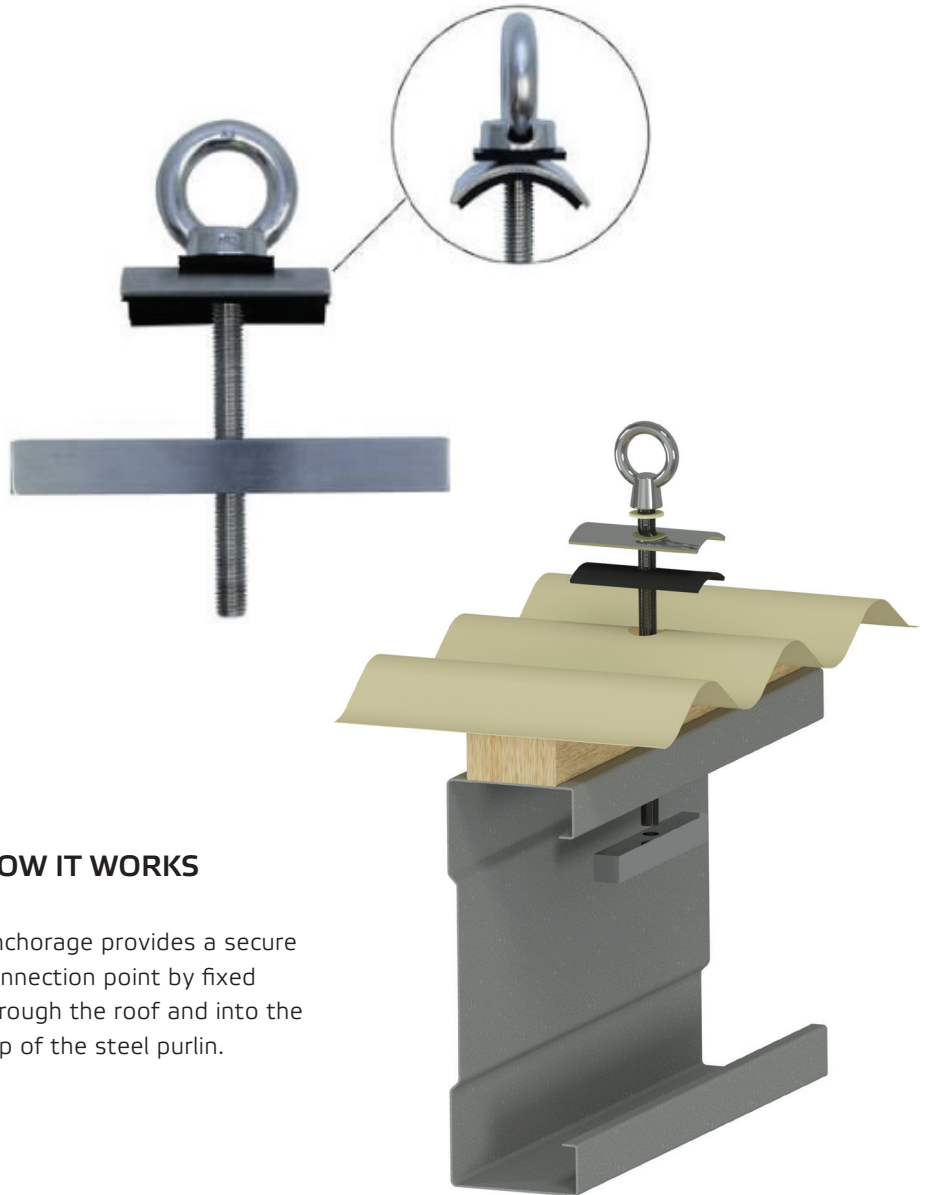


**PBI  
CORU  
Low Profile  
Corrugated Roof Anchor**

Permanent low-profile steel purlin mounted abseil and fall arrest anchor point for corrugated iron applications.

Abseil and fall arrest anchor constructed of stainless steel components and designed to be fixed onto a corrugated surface.



**HOW IT IS USED**

PBI Low Profile Corrugated anchor is designed to be installed to building roofs.

The anchors provide fall protection and abseil for Operatives doing a range of activities including roof wash downs, installing & maintaining HVAC air conditioning units, general maintenance or gutter cleaning.

The anchors are designed to support and hold a person in the event of a fall, and support a person for abseil access.

**HOW IT WORKS**

Anchorage provides a secure connection point by fixed through the roof and into the top of the steel purlin.





---

## PERFORMANCE

Conforms to AS/NZS 1891.4:2009 - industrial fall-arrest systems and devices - selection, use and maintenance. All anchors are certified to the requirements of AS/NZS 5532 as a single person fall arrest anchor point able to sustain a force of 15kN.

---

## INSTALLATION

Installation must be carried out by an accredited PBI Certified Technician, and in accordance with the manufacturer's installation instructions. Can be installed during roof construction or as a retrofit from the top of the roof surface.

---

## MAINTENANCE

As per AS/NZS 1891.4 The PBI Low profile corrugated anchor must be certified every 12 months by a qualified height safety equipment inspector. All of the exposed materials in the system have specified as naturally corrosion resistant, or have been coated with sacrificial coatings to prevent oxidation of the base material. It is important to consider that in some environments the system may need to be cleaned to gain the best possible life expectancy from the materials.

---



## WARRANTY

PBI warrants the Low Profile Corrugated anchor and its component parts against factory defects in workmanship and materials for 10 years from its date of original purchase. Conditions that must be fulfilled include the system must be installed in accordance with PBI's installation instructions. The system is inspected in accordance with PBI's inspection instructions and annually recertified by a certified installer. Fixings must be tested at installation and then at least once a year and recorded in accordance with PBI's installation instructions. The system must be owned by the person making the warranty claim. The system has been properly used and maintained in accordance with its user instruction manual.

---

## ENVIRONMENTAL

PBI Height Safety is committed to reducing its impact on the environment.

We will strive to improve our environmental performance over time and to initiate additional projects and activities that will further reduce our impacts on the environment.

Our commitment to the environment extends to our customers, our staff, and the community in which we operate. We are committed to supplying products with primary components made of recyclable material and supplied with minimum packaging to retain its structure and integrity during transit.

We will continually measure our environmental impacts and aim to reduce these impacts.



# TECHNICAL DRAWING – Low Profile Corrugated Anchor to Corrugated Roof

**NOTE:**  
This product is designed, used, installed and maintained in accordance with supporting technical information and additional conditions. Anchors have been installed to comply with AS/NZS 1891.4:2009 and are rated to 15kN. This anchor is suitable for 1 person for Absell and Fall Arrest. Reading instruction manual prior to use is essential. To be installed by accredited person. Annual inspection & re-certification is required as per AS/NZS 1891.4:2009.

**Rate to**  
15kN

© Copyright PBI Height Safety Limited (Do not copy/reproduce any part of this document without permission of PBI)			
Rev	Description	By	Date
A	L4551 to Corrugated roof	JC	28/07/16

**PBI Height Safety Limited**  
 10 Wood Place, PO Box 20948,  
 Hawerood, Hawerood,  
 Christchurch 8051, Christchurch 8044,  
 New Zealand. New Zealand  
 Phone: 0800 357 003  
 Fax: 03 357 4926  
 pbiheightsafety.com

Client: \_\_\_\_\_  
 Project Number: \_\_\_\_\_  
 Project: \_\_\_\_\_  
 Drawing Number: \_\_\_\_\_  
 Drawn: \_\_\_\_\_  
 Checked: \_\_\_\_\_  
 Date: \_\_\_\_\_

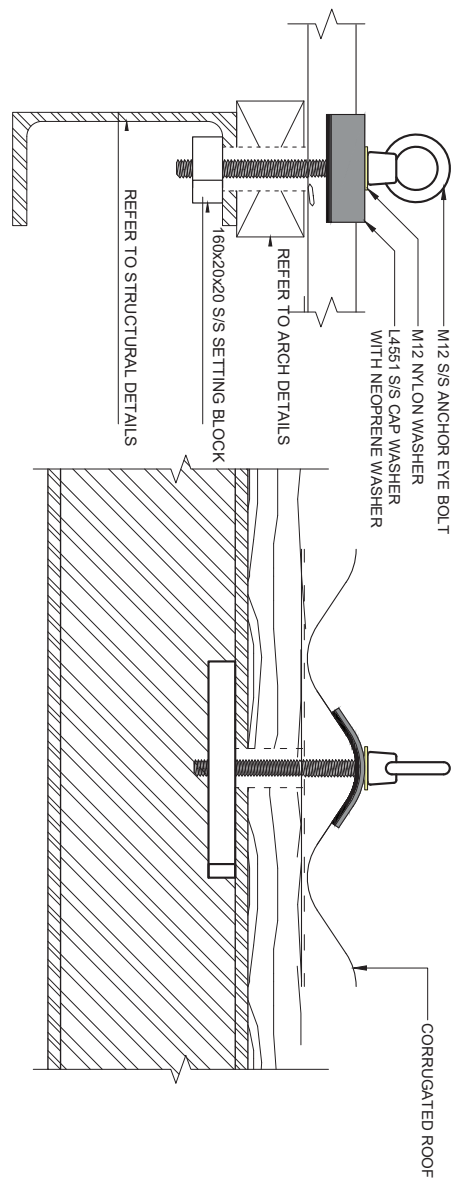
Scale: 1:3@A3  
 Revision: **(A)**



# TECHNICAL DRAWING – Low Profile Corrugated Anchor to Warm Roof

**NOTE:**  
 This product is designed, used, installed and maintained in accordance with supporting technical information and additional conditions. Anchors have been installed to comply with AS/NZS 1891.4:2009 and are rated to 15kN. This anchor is suitable for 1 person for Absell and Fall Arrest. Reading instruction manual prior to use is essential. To be installed by accredited person. Annual inspection & re-certification is required as per AS/NZS 1891.4:2009.

**Rate to**  
 15kN



© Copyright PBI Height Safety Limited  
 (Do not copy or reuse any part of this document without permission of PBI)

Rev	Description	By	Date

**PBI Height Safety Limited**  
 P.O. Box 30948,  
 Harewood, Christchurch 8151,  
 New Zealand  
 Fax: Phone: 0800 357 003  
 P: 0800 357 003  
 pbiheightsafety.com

Client: \_\_\_\_\_

Project Number: \_\_\_\_\_

Project: \_\_\_\_\_

Drawing Number: \_\_\_\_\_

Drawn: \_\_\_\_\_

Checked: \_\_\_\_\_

Date: \_\_\_\_\_

Scale: \_\_\_\_\_

Revision: **(A)**

**PBI HEIGHT SAFETY**

**NEW ZEALAND OFFICES**



**CHRISTCHURCH**  
10 Holt Place  
Harewood  
Christchurch 8053

**AUCKLAND**  
D23 / 930 Great South Road  
Penrose  
Auckland 1061

[info@pbiheightsafety.com](mailto:info@pbiheightsafety.com)



**TECHNICAL DRAWINGS KEY**



**Rate to**  
15kN



**Person**  
Capacity



**Abseil**



**Fall Arrest**



**Restraint**  
Technique