

## KINGSPAN

### SAFEPRO2

#### Surface Mounted Cable Static Lifeline

A high-strength Anchor and Cable system with energy-absorbing posts that limit the fall arrest load to less than 6kN.

Kingspan's SafePro2 Surface Mounted Cable Static Lifeline has been designed for use across all types of Kingspan Insulated Roof Panels.

## HOW IT IS USED

Kingspan SafePro2 Surface Mounted Cable Static Line is designed to be installed to building roofs.

The system is typically used where the Operative is required to move laterally over significant distance whilst staying connected.

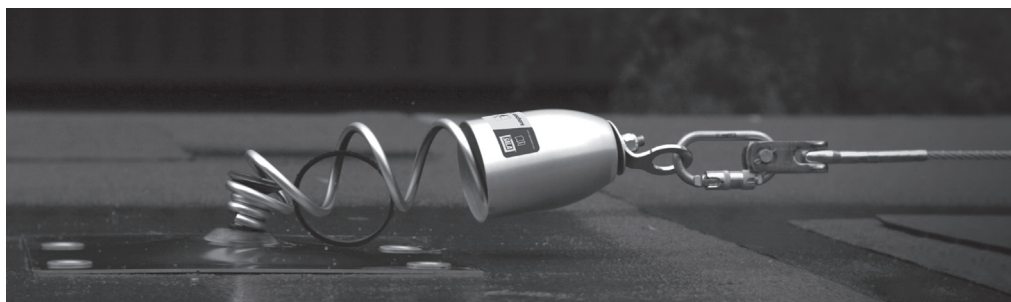
The system provides fall protection for Operatives doing a range of activities including roof wash downs, installing & maintaining HVAC air conditioning units, general maintenance or gutter cleaning. The Fall arrest system is designed to support and hold a person in the event of a fall.



## HOW IT WORKS

In the event of a fall, the anchor breaks open, deploying the unique and patented Force Management Technology absorbing system which reduces the forces generated on the roof structure to less than 610 kg. (6kN). In the unlikely event that the anchor is deployed, it is possible to remove the module and replace it with a new one.

SafePro2 cable requires less training and experience compared to single anchor points making it one of the safest systems to use. SafePro2 cable requires less training and experience compared to single anchor points making it one of the safest systems to use.





## PERFORMANCE

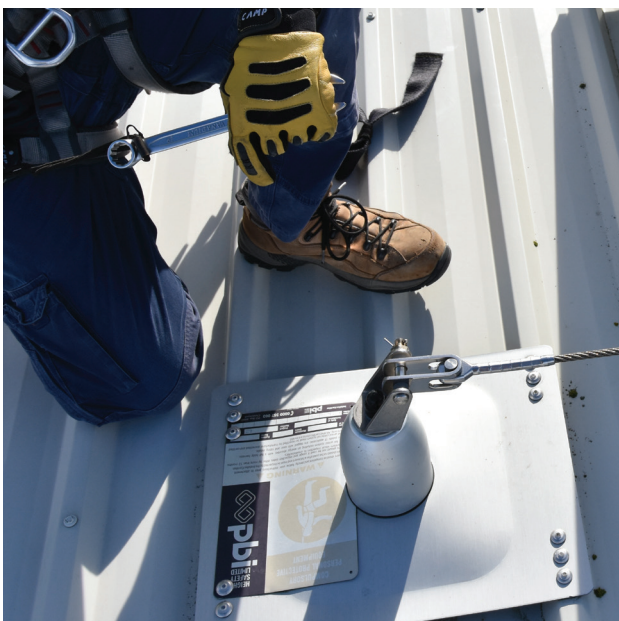
SafePro2 Surface Mounted Cable Static Lifeline meets AS/NZS 1891.2:2001 - Industrial fall-arrest systems and devices - Horizontal lifeline and rail systems safety standards, AS/NZS 1891.4:2009 - industrial fall-arrest systems and devices - selection, use and maintenance safety standards, designed for and tested on most roof types, EN 795 and OHS 1926. SafePro2 roof anchors incorporate force minimisation technology, which limits the load transferred to the roof, in a fall arrest event, to less than 6Kn.

## INSTALLATION

Installation should be carried out by a manufacturer trained technician who is familiar with the parameters of fall arrest systems.

## MAINTENANCE

As per AS/NZS 1891.4 SafePro 2 cable must be certified every 12 months by a qualified height safety equipment inspector. All of the exposed materials in the system have specified as naturally corrosion resistant, or have been coated with sacrificial coatings to prevent oxidation of the base material. It is important to consider that in some environments the system may need to be cleaned to gain the best possible life expectancy from the materials.



## WARRANTY

SafePro2 Cable system has a product warranty of 10 years from the date of installation. The warranty is invalidated if inspections are not maintained every 12 months by a qualified height safety equipment inspector.

## ENVIRONMENTAL

PBI Height Safety is committed to reducing its impact on the environment.

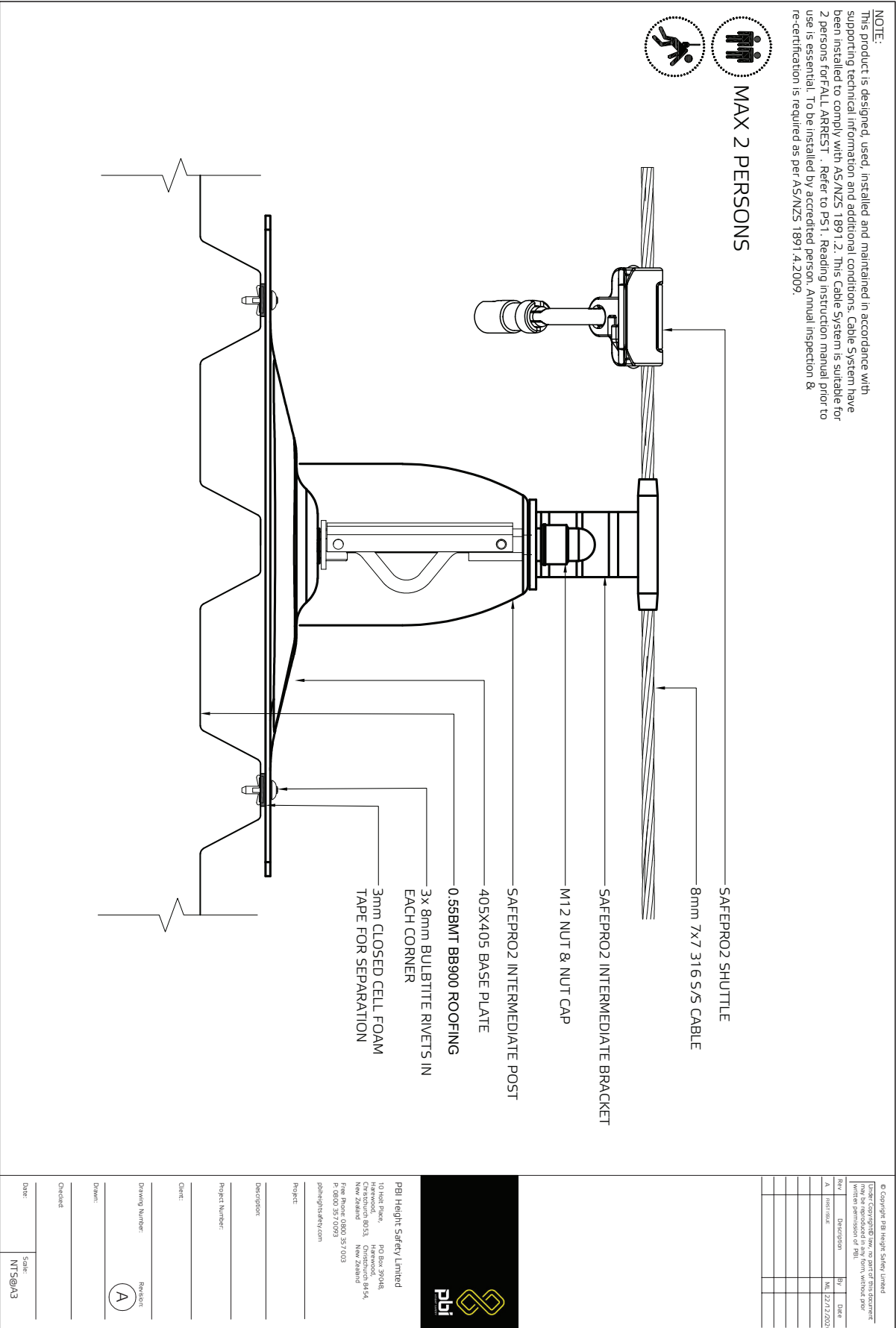
We will strive to improve our environmental performance over time and to initiate additional projects and activities that will further reduce our impacts on the environment.

Our commitment to the environment extends to our customers, our staff, and the community in which we operate. We are committed to supplying products with primary components made of recyclable material and is supplied with minimum packaging to retain its structure and integrity during transit.

We will continually measure our environmental impacts and aim to reduce these impacts.

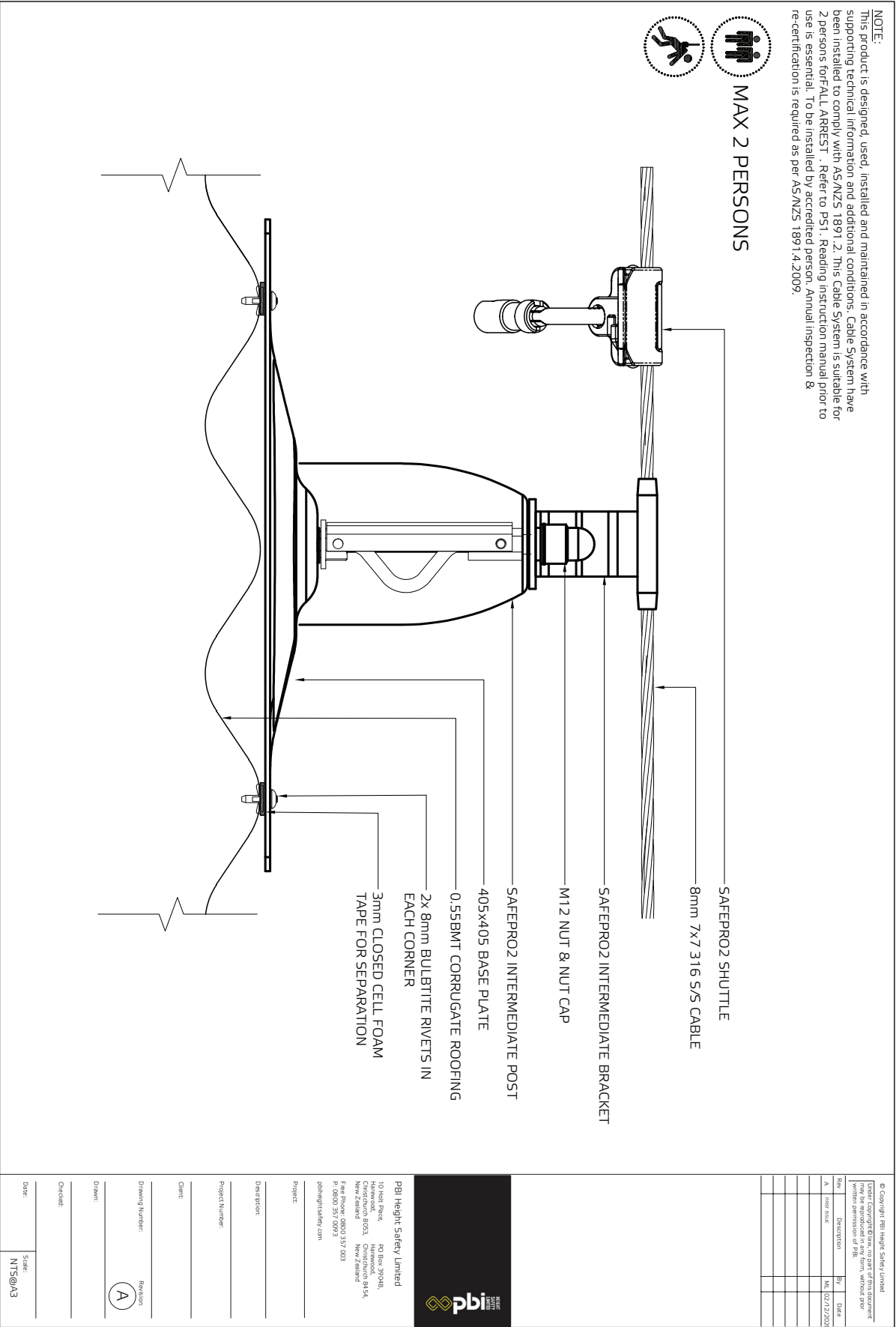


TECHNICAL DRAWING – SafePro2 Anchor & Cable to BB900



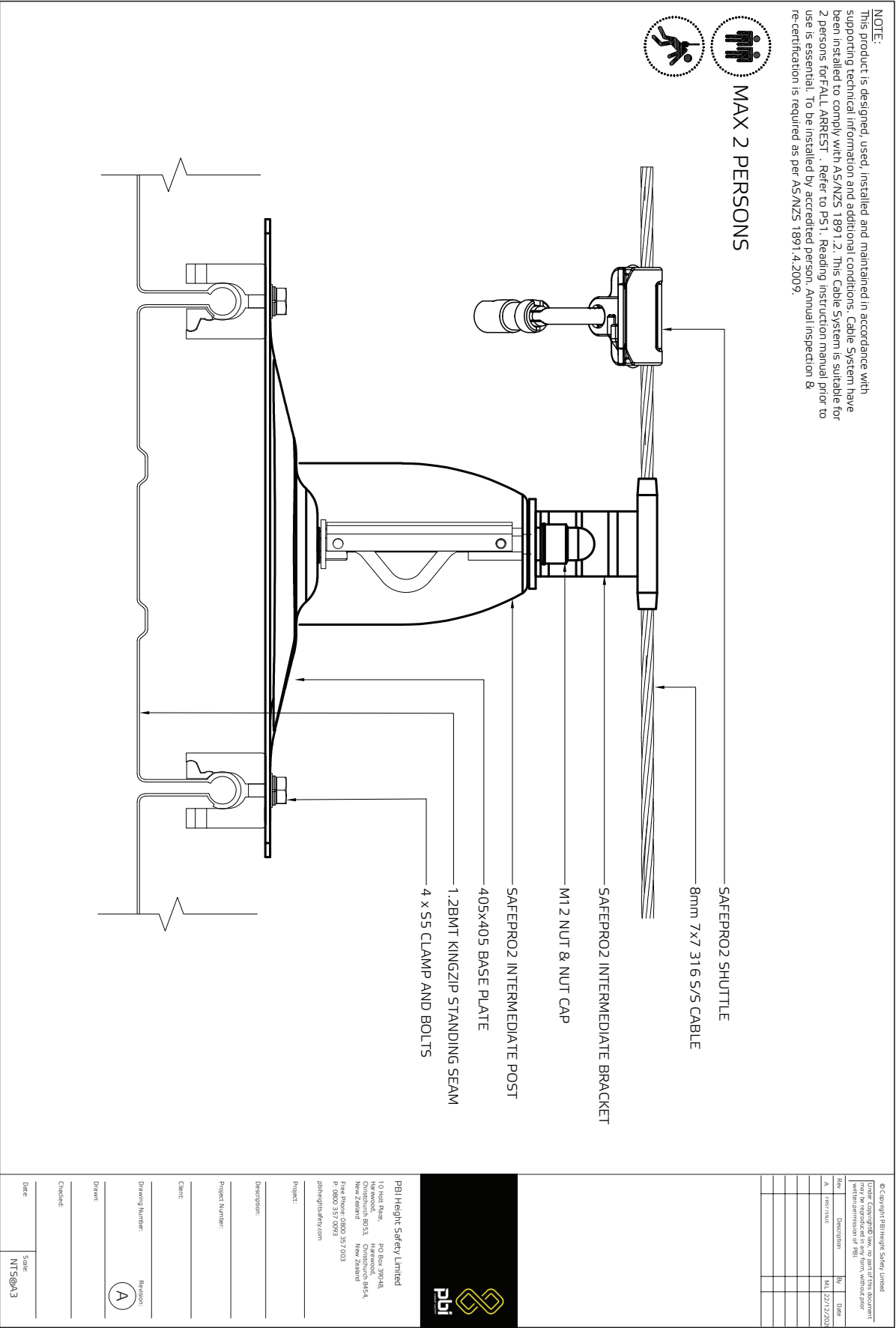


TECHNICAL DRAWING – SafePro2 Anchor & Cable to Corrugate





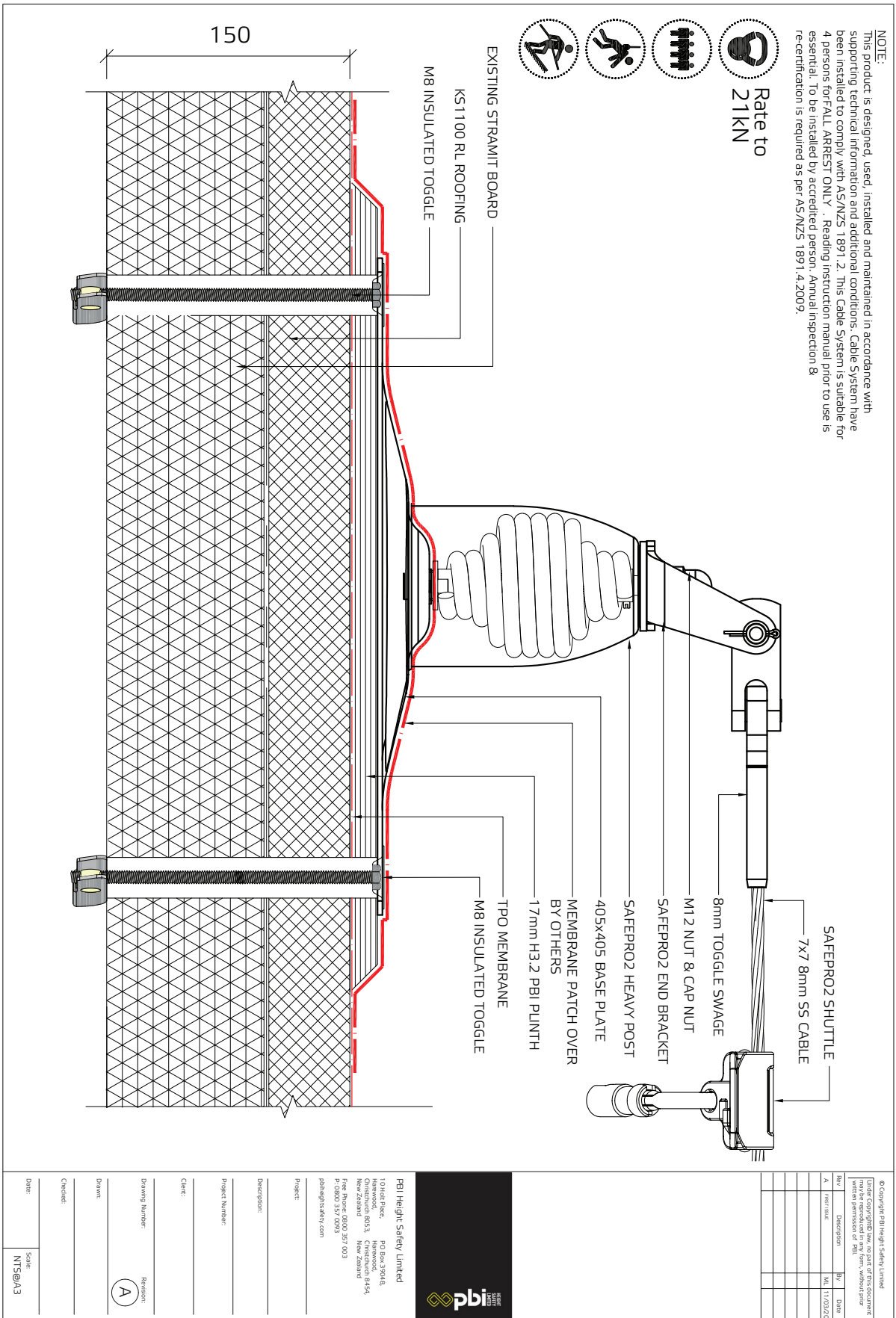
TECHNICAL DRAWING – SafePro2 Anchor & Cable to Kingzip








## TECHNICAL DRAWING – SafePro2 Anchor & Cable to KS1000RL





© Copyright PBI Heiglit Safety Limited			
Under Copyright law, no part of this document may be reproduced in any form, without prior written permission of PBI.			
<b>REVISION HISTORY</b>			
REV	DESCRIPTION	DRWN	DATE
A	FIRST ISSUE	ML	

10 Heit Place  
Harewood  
Christchurch 8053  
New Zealand  
PB1 Height Safety Limited  
Free Phone: 0800 357 003  
P: 0800 357 0093  
pb1heightsafety.com

Client:	
Description:	
Project Number:	
Project:	
Drawing Number:	Sheet Size:
Drawn:	
Checked:	
Date:	Scale:
	1:7.5

**PBI HEIGHT SAFETY**

## NEW ZEALAND OFFICES



### CHRISTCHURCH

10 Holt Place  
Harewood  
Christchurch 8053

### AUCKLAND

D23 / 930 Great South Road  
Penrose  
Auckland 1061

[info@pbiheightsafety.com](mailto:info@pbiheightsafety.com)



## TECHNICAL DRAWINGS KEY



**Rate to**  
15kN



**Person**  
Capacity



**Abseil**



**Fall Arrest**



**Restraint**  
Technique