

PRODUCT SPECIFICATION

PBI

Portable Steel Davit Davit Arm

The PSD, Portable Steel Davit, Arm is a fully modular lifting and lowering device that is environment resistant.

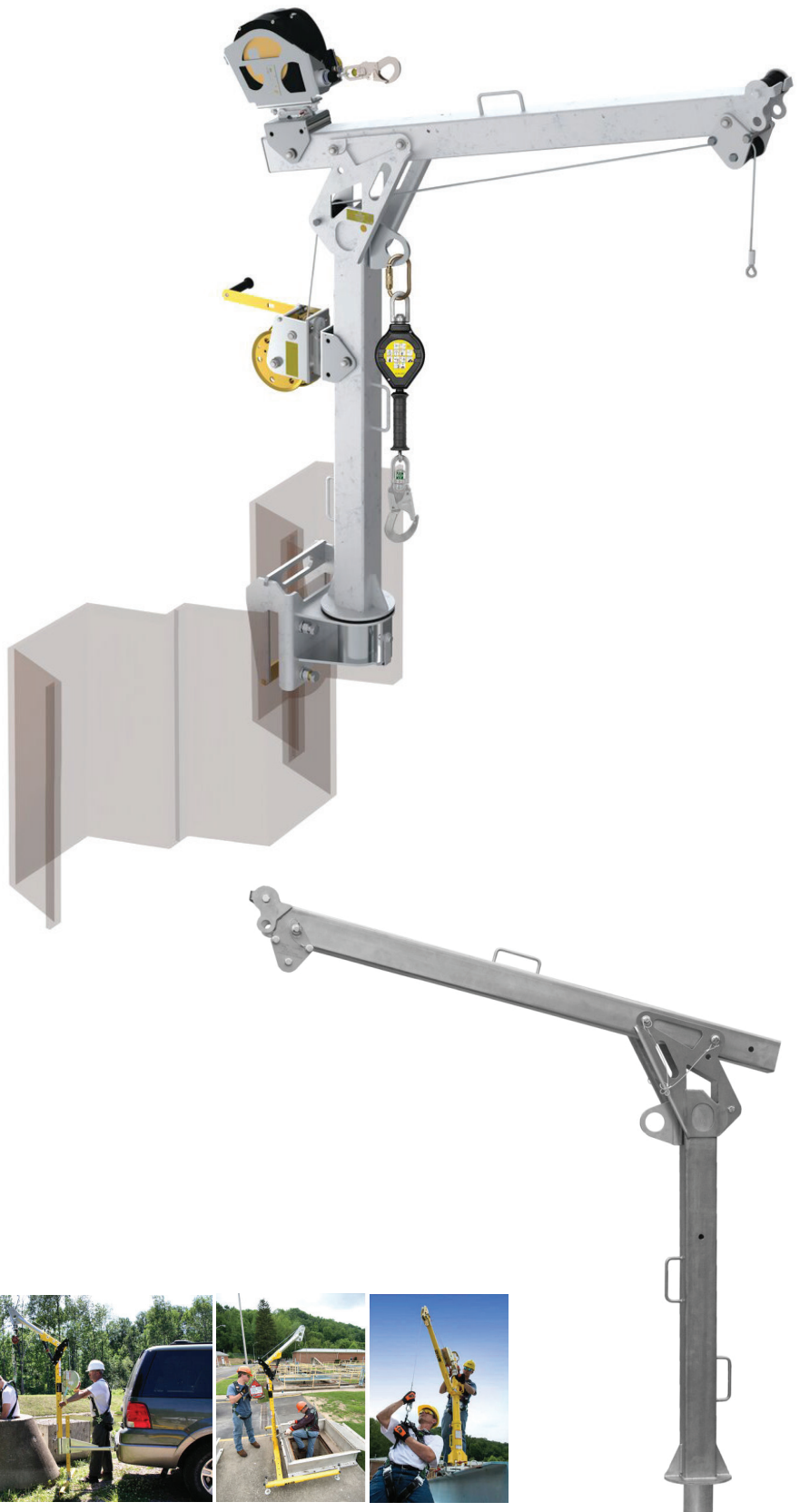
It can be used for lifting loads up to 500kg or for personal protection, up to three people at the same time. PSD Arm System is made of stainless steel.

HOW IT IS USED

The PBI PSD Davit Arm is a removable device that can be placed in predetermined positions to allow access to hard to reach places.

HOW IT WORKS

The PSD Davit Arm is used where there is a need to project an abseil rope out over the edge of a building without impacting the facade, parapet or possibly a glass balustrade. Davit bases are permanently fixed in place during construction and the davit arm is moved into position when required.



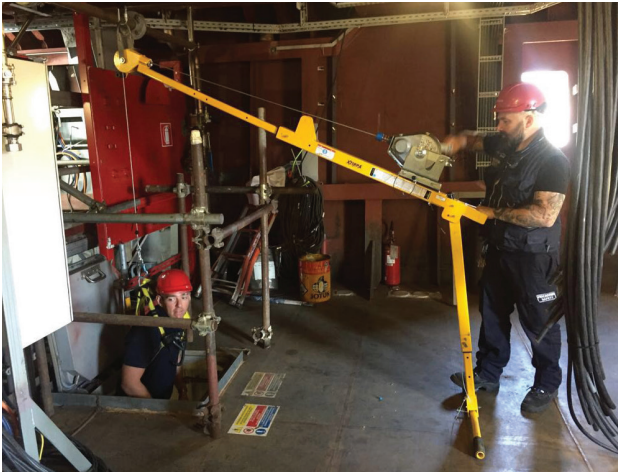


PERFORMANCE

Conforms to EN 795 Type B and CEN/TS 16415.

INSTALLATION

Installation should be carried out by a manufacturer trained technician who is familiar with the parameters of fall arrest and abseil systems.



MAINTENANCE

As per AS/NZS 1891.4 the PBI PSD Davit Arm must be certified every 12 months by a qualified height safety equipment inspector. After 5 years of use it is recommended that periodic inspections are carried out by the manufacturer of the equipment or an entity authorised by the manufacturer to carry out such inspections.

All of the exposed materials in the system have specified as naturally corrosion resistant, or have been coated with sacrificial coatings to prevent oxidation of the base material. It is important to consider that in some environments the system may need to be cleaned to gain the best possible life expectancy from the materials.

WARRANTY

The manufacturer grants a warranty for 12 months from the date of purchase of the device. The warranty covers; defects in material, defects in workmanship, anti-corrosion coating defects.



ENVIRONMENTAL

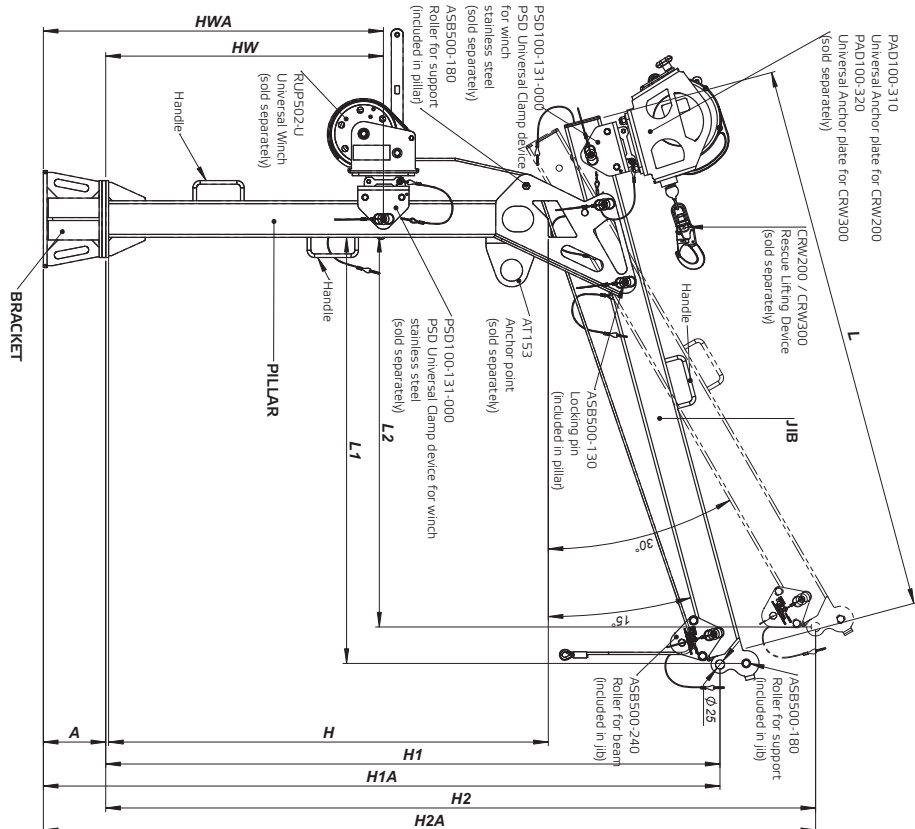
PBI Height Safety is committed to reducing its impact on the environment.

We will strive to improve our environmental performance over time and to initiate additional projects and activities that will further reduce our impacts on the environment.

Our commitment to the environment extends to our customers, our staff, and the community in which we operate. We are committed to supplying products with primary components made of recyclable material and are supplied with minimum packaging to retain its structure and integrity during transit.

We will continually measure our environmental impacts and aim to reduce these.

TECHNICAL DRAWING – Davit Arm Technical Details



PORTABLE STEEL DAVIT

DESCRIPTION	DATE	AMOUNT	REMARKS
...

PSD - Portable Steel Davit Arm System is environment resistant, fully modular lifting and lowering device. Can be used for lifting loads up to 5000kg (indicated on the Jib) and for personal protection up to three people at the same time or for personal rescue operations using RUP502Z / CRW200 / CR300 rescue lifting devices (up to 140kg). PSD device is made of stainless steel.

[illegible]

REFERENCE NUMBER FOR PSD SET
PSD"AAA"- "HHH"- "LLL"

PSD - Type of Davit device

"AAA" - Bracket

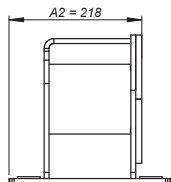
(002 - bracket #2 / 003 - bracket #3)

"HHH" - Pillar height [cm]

"LLL" - JIB length [cm]
(150 / 200)

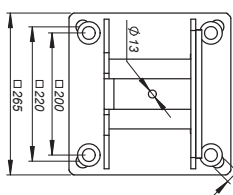
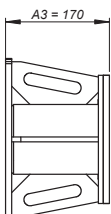
PSD100-520-000
BRACKET #2 - WALL MOUNTING

Use with M20 anchor bolts



PSD100-530-000
BRACKET #3 - GROUND MOUNTING

Made of stainless steel.
Use with M20 anchor bolts



PARAMETERS	
	JIB 1.5m
Working Load Limit (WLL) for lifting loads	500kg
Working Load Limit (WLL) for personal protection	140kg
Personal protection at the same time	3 people
	JIB 2.0m
	300kg
	100kg
	1 person

Date	By	Description	Rm

© Copyright PDI Health Safety Limited

Under Copyright law, no part of this document may be reproduced in any form, without prior written permission of PDI.

PBI HEIGHT SAFETY

NEW ZEALAND OFFICES



CHRISTCHURCH

10 Holt Place
Harewood
Christchurch 8053

AUCKLAND

D23 / 930 Great South Road
Penrose
Auckland 1061

info@pbiheightsafety.com



TECHNICAL DRAWINGS KEY



Rate to
15kN



Person
Capacity



Abseil



Fall Arrest



Restraint
Technique