

## ROSTEK

### Unit Cradles

Unit Cradles can be used in conjunction with Rostek Monorail Access Systems.

Rostek Unit Cradles work perfectly with Rostek Monorail Access Systems and Roof Trolley Systems, but they can also be suspended from davits or gantries.



### HOW IT WORKS

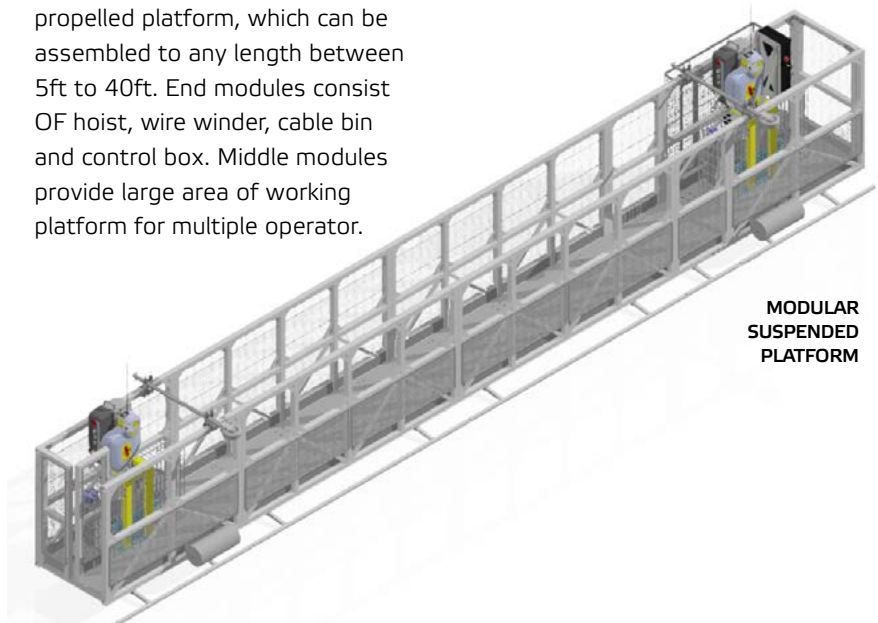
Our **BMU1 Cradle** for one person is designed to access smaller areas of facade where it would be difficult or impossible to fit the larger 2-Hoist BMU Cradle.

**BMU2 Cradle** is a two person Building Maintenance Unit which is equipped with two traction hoists and wire winders on both ends of the cradle.

**Modular Suspended Platform (MSP)** is a light-weight, self propelled platform, which can be assembled to any length between 5ft to 40ft. End modules consist of hoist, wire winder, cable bin and control box. Middle modules provide large area of working platform for multiple operator.



BMU2 CRADLE



MODULAR SUSPENDED PLATFORM

### HOW IT IS USED

Unit cradles can range from a one person cradle to platforms four metres in length. All cradles are lightweight and made with high-grade aluminium profiles with galvanised steel frames and stainless steel fasteners. The Building Maintenance Unit Cradle is a cost effective option for facade access - especially when there is limited rooftop space.

There are three cradle options available; **BMU1** (one person), **BMU2** (two persons) and **Modular Suspended Platforms** (multiple people) to ensure a solution that is fit for purpose and makes economic sense.



## PERFORMANCE

Rostek Unit Cradles are designed and tested according to EN1808. Rostek BMU Cradles work perfectly with Rostek Monorail Access Systems and Roof Trolley Systems, but they can also be suspended from davits or gantries.

## INSTALLATION

Installation must only be carried out by persons trained and certified to set up such equipment. NZQA unit standard 26549 or similar.

## MAINTENANCE

Rostek Unit cradles must be certified every 12 months by an Accredited Rostek Certification technician. All of the exposed materials in the system have specified as naturally corrosion resistant, or have been coated with sacrificial coatings to prevent oxidation of the base material. It is important to consider that in some environments the system may need to be cleaned to gain the best possible life expectancy from the materials.

## WARRANTY

Warranty for 10 years and 2 years installation.



BMU1 CRADLE

## ENVIRONMENTAL

PBI Height Safety is committed to reducing its impact on the environment.

We will strive to improve our environmental performance over time and to initiate additional projects and activities that will further reduce our impacts on the environment.

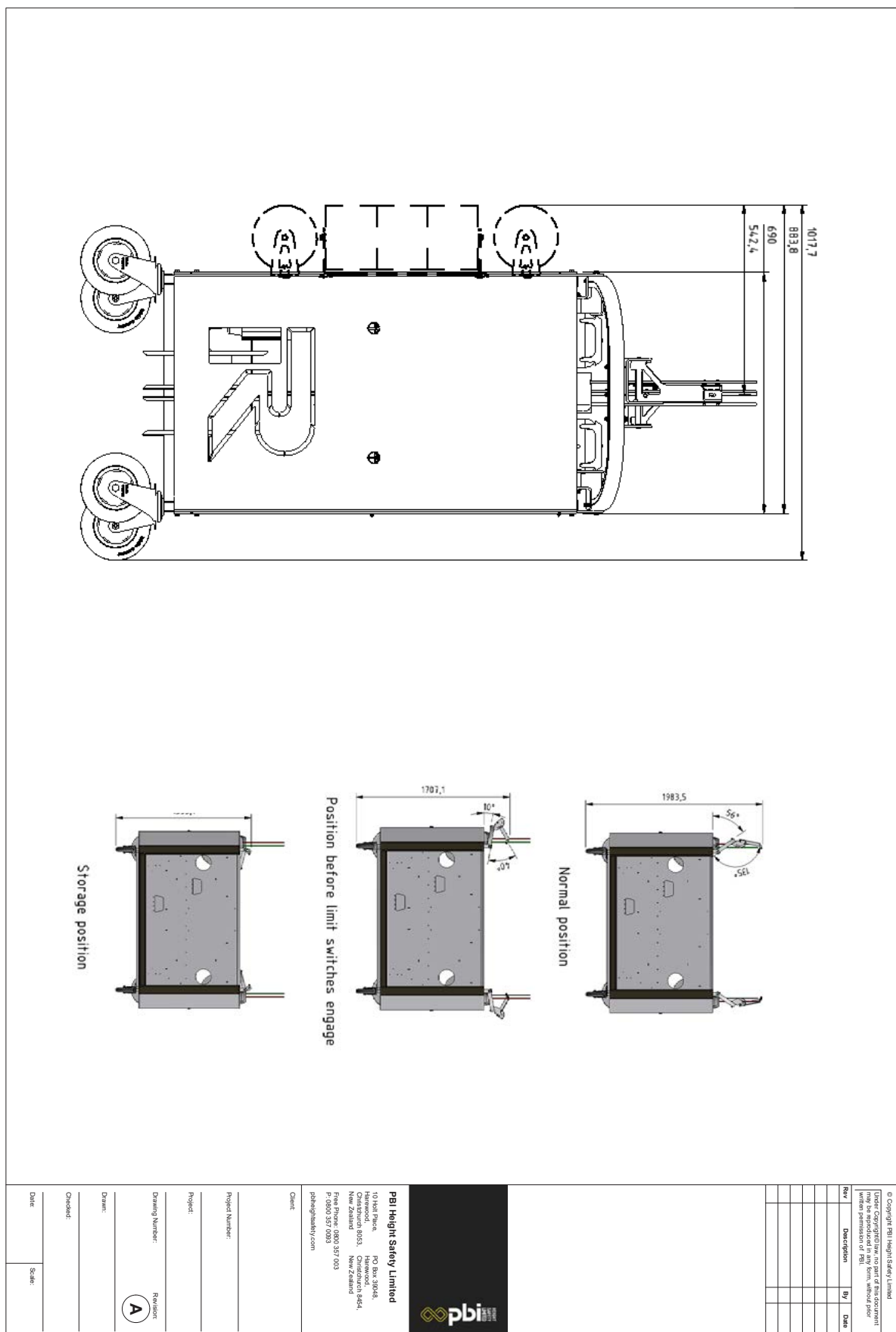
Our commitment to the environment extends to our customers, our staff, and the community in which we operate. We are committed to supplying products with primary components made of recyclable material and is supplied with minimum packaging to retain its structure and integrity during transit.

We will continually measure our environmental impacts and aim to reduce these impacts.





TECHNICAL DRAWING – Rostek Business Maintenance Unit 1 Cradle



**PBI HEIGHT SAFETY**

## NEW ZEALAND OFFICES



### CHRISTCHURCH

10 Holt Place  
Harewood  
Christchurch 8053

### AUCKLAND

D23 / 930 Great South Road  
Penrose  
Auckland 1061

[info@pbiheightsafety.com](mailto:info@pbiheightsafety.com)



## TECHNICAL DRAWINGS KEY



Rate to  
15kN



Person  
Capacity



Abseil



Fall Arrest



Restraint  
Technique