

## SAFETYLINK

### TILELINK

#### Anchor Point

The TileLink Anchor is a multidirectional timber or steel truss roof anchor and comprises of one component, making installation much simpler and time effective.

Fall arrest anchor constructed of stainless steel components and designed to be fixed onto the timber truss.

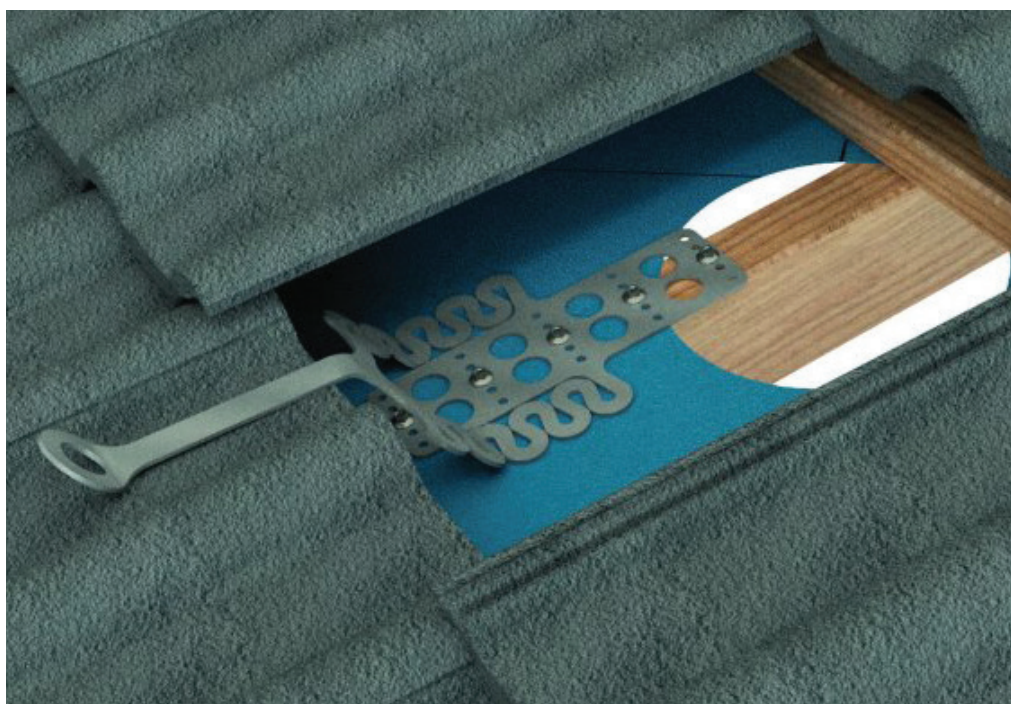
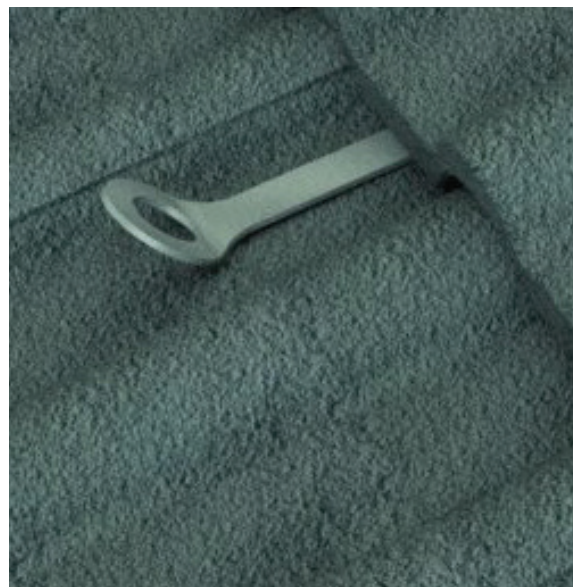
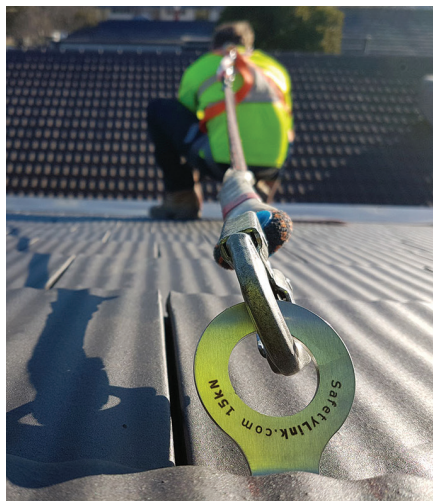
## HOW IT IS USED

Anchorage provides a secure connection point for a fall protection system designed to stop a person from injuring themselves when there is a fall from height.

## HOW IT WORKS

Safetylink TileLink Anchors patented design absorbs energy. Which means in the event of a fall, the anchors absorb the energy, reducing the risk of injury to the user and damage to the structure.

Indication of deployment; energy absorbing regions are expanded, signals the TileLink should be replaced.





## PERFORMANCE

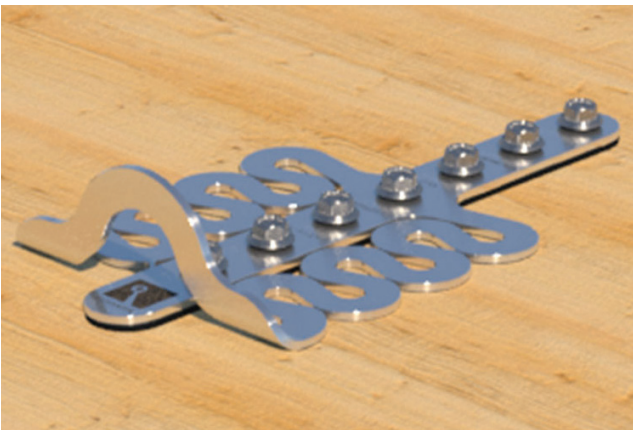
Conforms to AS/NZS 1891.4:2009 - industrial fall-arrest systems and devices - selection, use and maintenance. All anchors are certified to the requirements of AS/NZS 5532 as a single person fall arrest anchor point able to sustain a force of 15kN.

## INSTALLATION

All roof anchors are required to be inspected by a competent person and recertified annually or more frequently as required or if used in highly corrosive environments. Further details can be obtained from AS/NZS 1891.4:2009 or by contacting PBI Height Safety.

## MAINTENANCE

As per AS/NZS 1891.4 The Safetylink tilelink anchor must be certified every 12 months by a qualified height safety equipment inspector. All of the exposed materials in the system have specified as naturally corrosion resistant, or have been coated with sacrificial coatings to prevent oxidation of the base material. It is important to consider that in some environments the system may need to be cleaned to gain the best possible life expectancy from the materials.



## WARRANTY

SafetyLink warrants that at the time of shipment, products manufactured by them will be free from defects in material and workmanship. In absence of a modified written warranty, the company agrees to make good any such defects by repairing the same or at the companies option by replacement, for a period of 1 year from the date of shipment.

## ENVIRONMENTAL

SafetyLink is committed to the prevention of pollution and considers responsible management of environmental issues as an essential component of its business.

SafetyLink is committed to achieving, implementing and maintaining an environmental management system that continually improves and insures that SafetyLink's operation and its related business activities are:



Conducted in an environmentally sound and responsible manner, Comply with current legislative requirements, and other statutory governing bodies.

SafetyLink shall: Assess the risk on the environment of existing operations and any changes as contemplated for areas under their control and minimise the risk where possible;

Integrate this Environmental Policy into work practices;

Establish the objectives, targets and framework for environmental management system.

Ensure that site specific environmental audits are scheduled and carried out by competent persons;

Maintain adequate hazardous waste materials management and disposal procedure records;

Ensure that local emergency procedures incorporate environmental issues and that the procedures are reviewed regularly and updated as required;

Ensure that all accidents and incidents, which pose potential harm to the environment, are reported to the relevant statutory authority, that internal investigations are carried out, and that recommendations arising out of investigations are implemented where practicable;

Identify and utilise environmentally sound, technically acceptable products, practices and services, and where practicable selecting natural resources which can be recycled, re-used or disposed of safely;

Implement waste minimisation strategies to ensure minimal impact on the environment is negligible or prevented;

Ensure that all employees receive training to perform their tasks in a manner designed to comply with legislative requirements and minimise any negative impact on environment;

Ensure that employees and contractors adopt a high standard on environmental responsibility in the workplace and off the job;

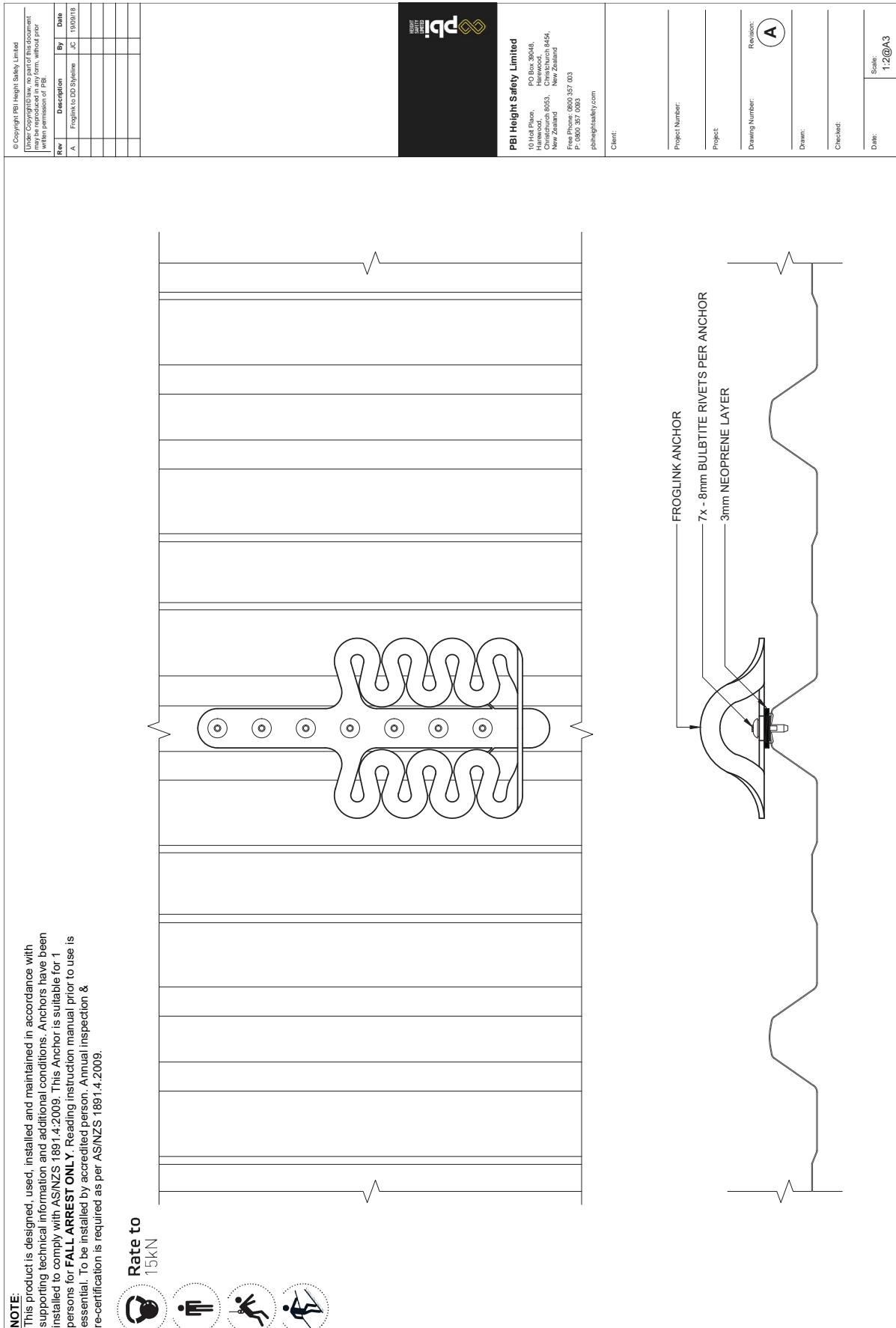
Ensure that all contractors are inducted and have a site induction for the SafetyLink site that they will be working at.

Consult with employees about environmental matters which may affect them;

Implement the Environmental Management Policy in consultation with employees.

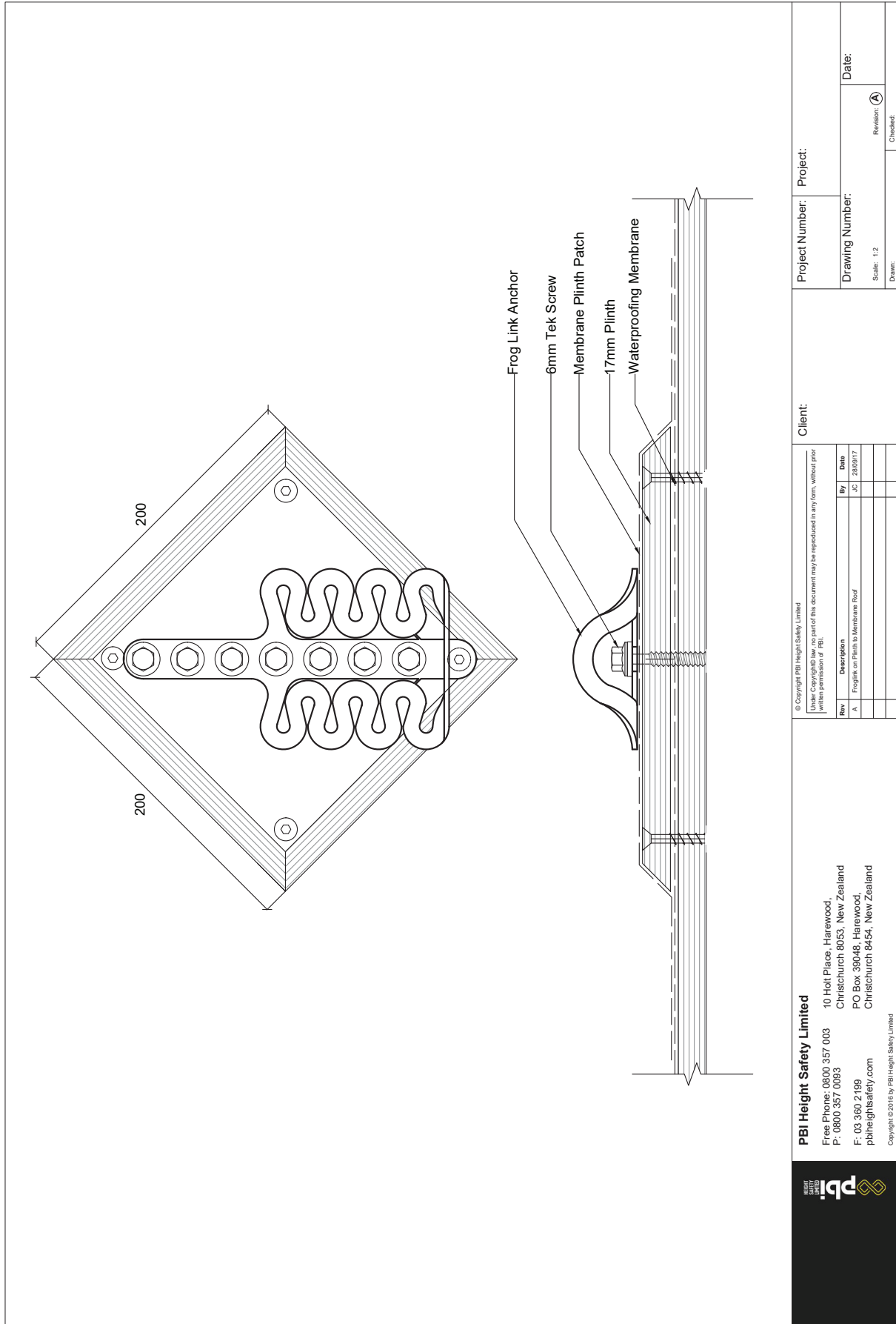


# TECHNICAL DRAWING – SafetyLink Froglink to DD Styleline





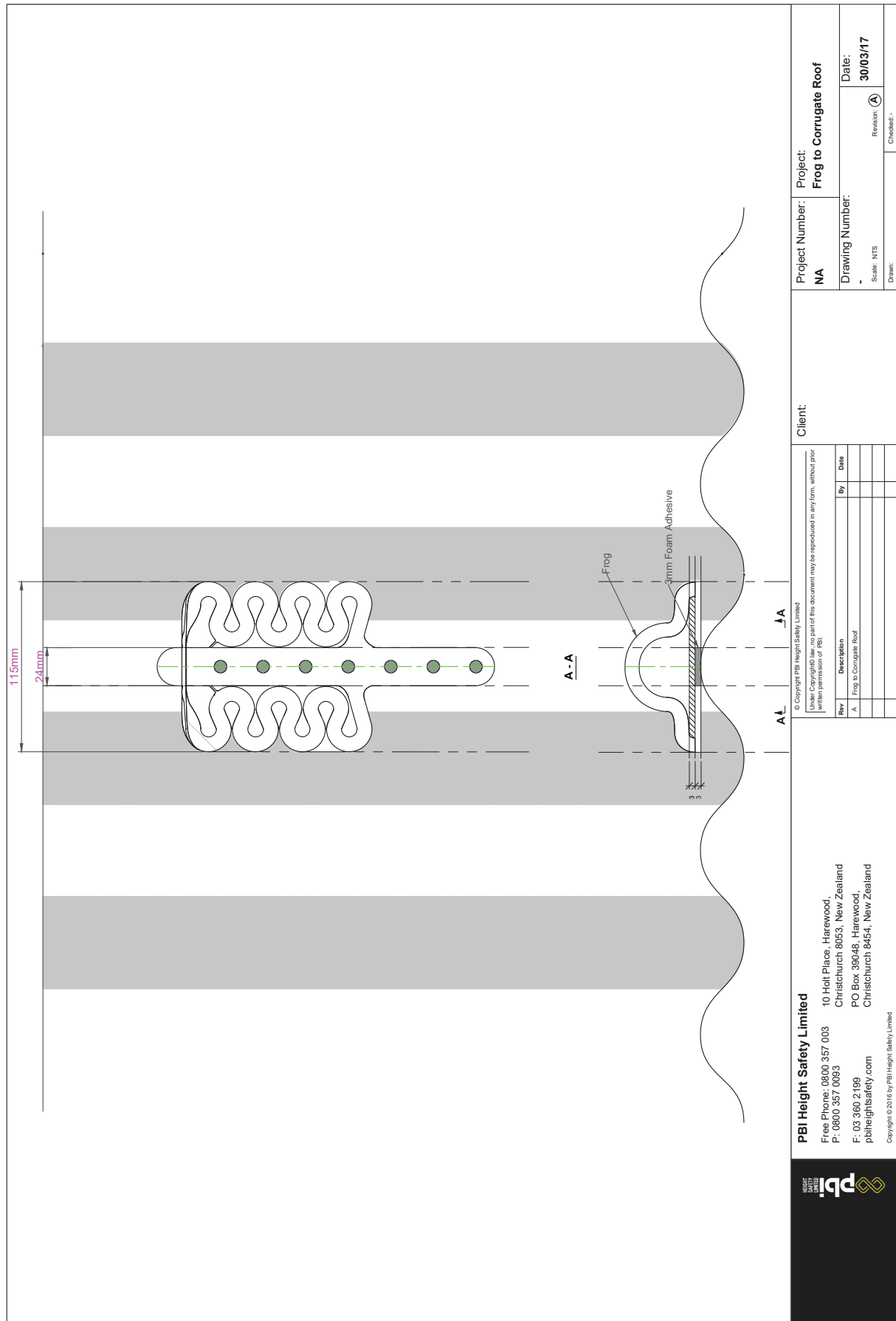
## TECHNICAL DRAWING – SafetyLink Froglink on Plinth to Membrane Roof







# TECHNICAL DRAWING – SafetyLink Froglink to Corrugate Roof



Technical drawing of a Fall Arrest - Rivet assembly. The drawing includes a top view of the rivet assembly, a side view of the rivet, and a detailed view of the rivet head. The rivet assembly consists of a main body with a wavy, spring-like structure and a long, straight section with a series of holes. The rivet head is shown in a side view, highlighting its curved shape and the central hole. The drawing is labeled with dimensions and part numbers, and includes a title block with project information.

ITEM	QTY	PART NUMBER	DESCRIPTION
1	1	410061	3mm CLOSED CELL FOAM TAPE FOR SEPARATION
2	7	420012	8mm BULBITE RIVET - ALU
3	1	420160	Froglink Fall Arrest Anchor

**PART'S LIST**

**REVISION HISTORY**

REV	DESCRIPTION	DRAWN	DATE
1	FIRST ISSUE	ML	06/08/20

**Client:** \_\_\_\_\_

**Description:** \_\_\_\_\_

**FALL ARREST - RIVET**

**Project Number:** \_\_\_\_\_

**Project:** \_\_\_\_\_

**Drawing Number:** \_\_\_\_\_

**Sheet Size:** (A3)

**Drawn:** \_\_\_\_\_

**CAD**

**Checked:** \_\_\_\_\_

**Date:** \_\_\_\_\_

**Scale:** 1:2

**PBI HEIGHT SAFETY**

## NEW ZEALAND OFFICES



### CHRISTCHURCH

10 Holt Place  
Harewood  
Christchurch 8053

### AUCKLAND

D23 / 930 Great South Road  
Penrose  
Auckland 1061

[info@pbiheightsafety.com](mailto:info@pbiheightsafety.com)



## TECHNICAL DRAWINGS KEY



**Rate to**  
15kN



**Person**  
Capacity



**Abseil**



**Fall Arrest**



**Restraint**  
Technique