

PBI

Timber Mounted Fall Arrest Anchor

Truss mounted fall arrest anchor for use on building roofs.

PBI's permanent truss mounted roof anchor is ideal for both residential and commercial applications. The anchor provides an economical solution for fall protection during the initial construction stage as well as future roof access and maintenance. All anchor components are manufactured from 316 grade stainless steel and are able to sustain a load of up to 15 kN for single person use.



HOW IT IS USED

PBI Timber Fixed anchor is designed to be installed to building roofs.

The anchors provide fall protection for Operatives doing a range of activities including roof wash downs, installing & maintaining HVAC air conditioning units, general maintenance or gutter cleaning.

The anchors are designed to support and hold a person in the event of a fall.

HOW IT WORKS

Anchorage provides a secure connection point for a fall protection system designed to stop a person from injuring themselves when there is a fall from height.

The anchor is fixed to the timber roof structure with some additional bracing and is designed to deflect in the event of a fall. This reduces the loading on the structure and the operative.





PERFORMANCE

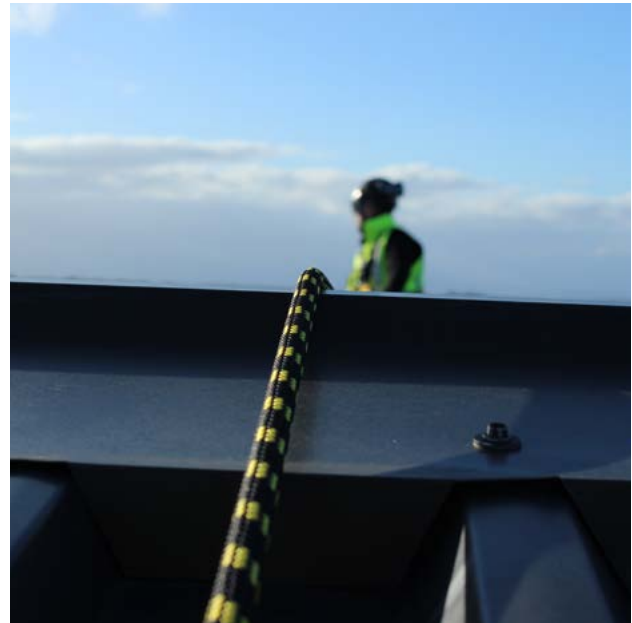
Conforms to AS/NZS 1891.4:2009 - industrial fall-arrest systems and devices - selection, use and maintenance, designed for and tested on most roof types, has been designed to withstand a 15kN load. All anchors are certified to the requirements of AS/NZS 5532 as a single person fall arrest anchor point able to sustain a force of 15kN.

INSTALLATION

Installation must be carried out by an accredited PBI Certified Technician, and in accordance with the manufacturer's installation instructions. Can be installed during roof construction or as a retrofit from the top of the roof surface.

MAINTENANCE

As per AS/NZS 1891.4 The PBI timber fix anchor must be certified every 12 months by a qualified height safety equipment inspector. All of the exposed materials in the system have specified as naturally corrosion resistant, or have been coated with sacrificial coatings to prevent oxidation of the base material. It is important to consider that in some environments the system may need to be cleaned to gain the best possible life expectancy from the materials.



WARRANTY

PBI warrants the timber fix anchor and its component parts against factory defects in workmanship and materials for 10 years from its date of original purchase. Conditions that must be fulfilled include the system must be installed in accordance with PBI's installation instructions. The system is inspected in accordance with PBI's inspection instructions and annually recertified by a certified installer.

ENVIRONMENTAL

PBI Height Safety is committed to reducing its impact on the environment.

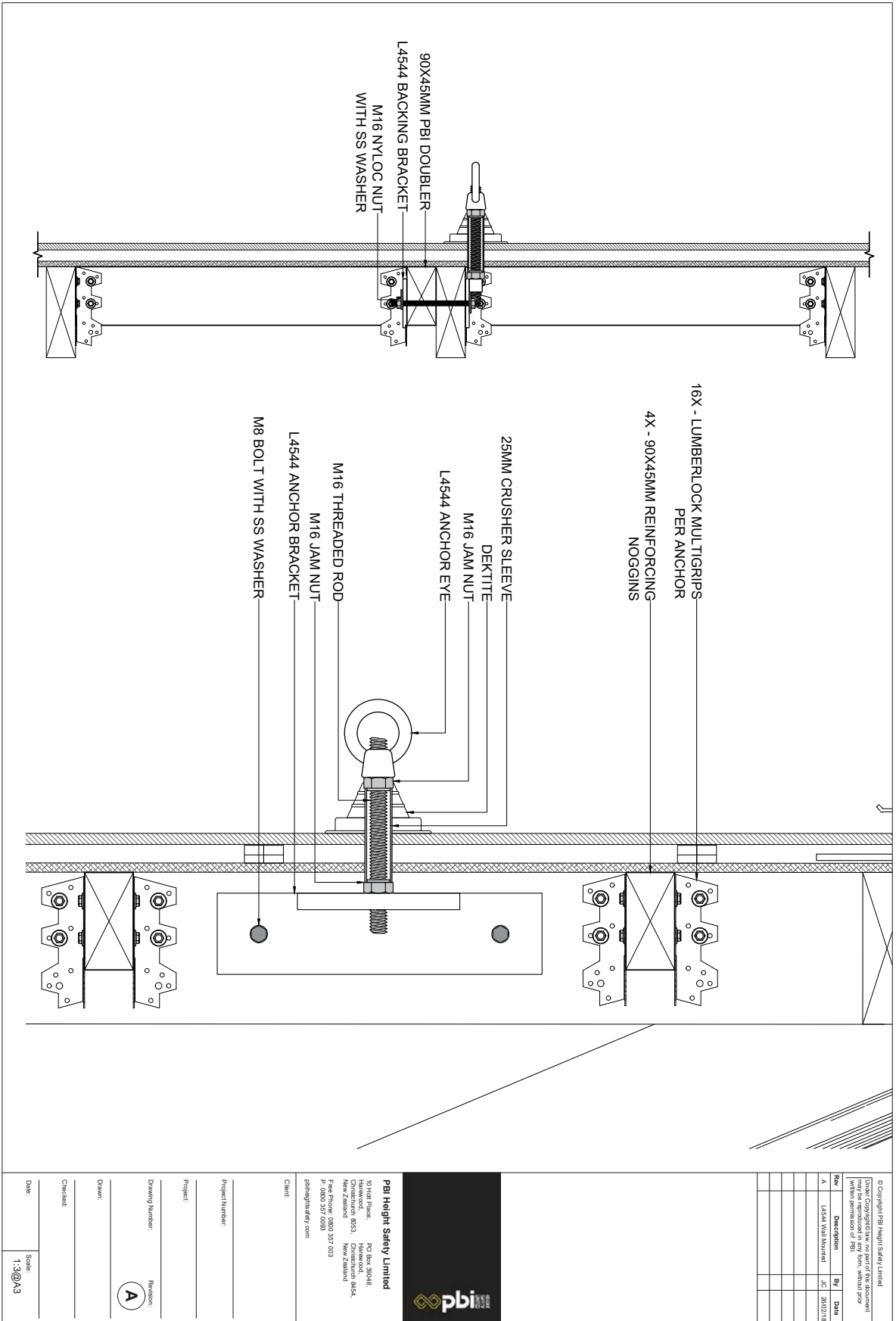
We will strive to improve our environmental performance over time and to initiate additional projects and activities that will further reduce our impacts on the environment.

Our commitment to the environment extends to our customers, our staff, and the community in which we operate. We are committed to supplying products with primary components made of recyclable material and supplied with minimum packaging to retain its structure and integrity during transit.

We will continually measure our environmental impacts and aim to reduce these impacts.

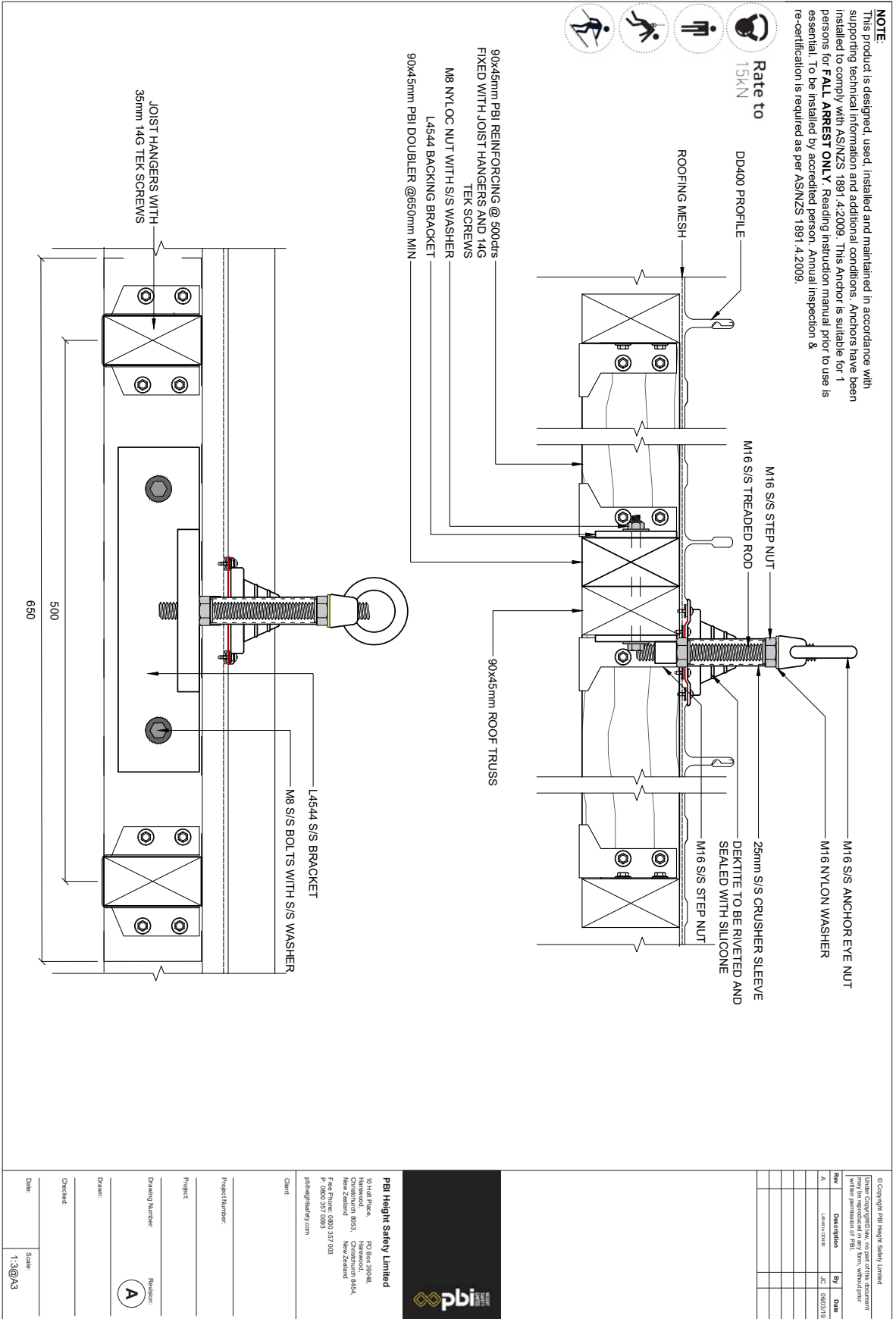


TECHNICAL DRAWING – Wall Mounted





TECHNICAL DRAWING – to DD400





TECHNICAL DRAWING – FA Anchor to Truss

NOTE:
 This product is designed, used, installed and maintained in accordance with supporting technical information and additional conditions. Anchors have been installed to comply with AS/NZS 1891.4:2009. This Anchor is suitable for 1 persons for **FALL ARREST ONLY**. Reading instruction manual prior to use is essential. To be installed by accredited person. Annual inspection & re-certification is required as per AS/NZS 1891.4:2009.

Rate to 15kN

© Copyright PBI Height Safety Limited
 Under Copyright law, no part of this document
 may be reproduced without the written
 permission of PBI.

Rev	Description	By	Date
A	Update to Anchor to Truss	SC	12/07/19

PBI Height Safety Limited
 101 Hill Plaza, PO Box 38048,
 Auckland 10155, New Zealand 0624,
 New Zealand
 Free Phone 0800 357 003
 P 0800 357 003
 pbiheightsafety.com

Client: _____
Project Number: _____
Project: _____
Drawing Number: _____
Revision: **(A)**
Date: _____
Checked: _____
Date: _____
Scale: 1:4 @A3

PBI HEIGHT SAFETY

NEW ZEALAND OFFICES



CHRISTCHURCH
10 Holt Place
Harewood
Christchurch 8053

AUCKLAND
D23 / 930 Great South Road
Penrose
Auckland 1061

info@pbiheightsafety.com



TECHNICAL DRAWINGS KEY



Rate to
15kN



Person
Capacity



Abseil



Fall Arrest



Restraint
Technique