

PBI
TRAP
Low Profile
Trapezoidal Roof Anchor

Permanent low-profile steel purlin mounted abseil and fall arrest anchor point for trapezoidal applications.

Abseil and fall arrest anchor constructed of stainless steel components and designed to be fixed onto a trapezoidal surface.



HOW IT IS USED

PBI Low Profile Trap anchor is designed to be installed to building roofs.

The anchors provide fall protection and abseil fixtures for Operatives doing a range of activities including roof wash downs, installing & maintaining HVAC air conditioning units, general maintenance or gutter cleaning.

The anchors are designed to support and hold a person in the event of a fall, and support a person for abseil access.

HOW IT WORKS

Anchorage provides a secure connection point by fixing through the roof and into the top of the steel purlin.





PERFORMANCE

Conforms to AS/NZS 1891.4:2009 - industrial fall-arrest systems and devices - selection, use and maintenance. All anchors are certified to the requirements of AS/NZS 5532 as a single person fall arrest anchor point, able to sustain a force of 15kN.

INSTALLATION

Installation must be carried out by an accredited PBI Certified Technician, and in accordance with the manufacturer's installation instructions. Can be installed during roof construction or as a retrofit from the top of the roof surface.

MAINTENANCE

As per AS/NZS 1891.4 the PBI Low Profile Trap anchor must be certified every 12 months by a qualified height safety equipment inspector. All of the exposed materials in the system have specified as naturally corrosion resistant, or have been coated with sacrificial coatings to prevent oxidation of the base material. It is important to consider that in some environments the system may need to be cleaned to gain the best possible life expectancy from the materials.



WARRANTY

PBI warrants the Low Profile Trap anchor and its component parts against factory defects in workmanship and materials for 10 years from its date of original purchase. Conditions that must be fulfilled include the system must be installed in accordance with PBI's installation instructions. The system is inspected in accordance with PBI's inspection instructions and annually recertified by a certified installer. Fixings must be tested at installation and then at least once a year and recorded in accordance with PBI's installation instructions. The system must be owned by the person making the warranty claim. The system has been properly used and maintained in accordance with its user instruction manual.

ENVIRONMENTAL

PBI Height Safety is committed to reducing its impact on the environment.

We will strive to improve our environmental performance over time and to initiate additional projects and activities that will further reduce our impacts on the environment.

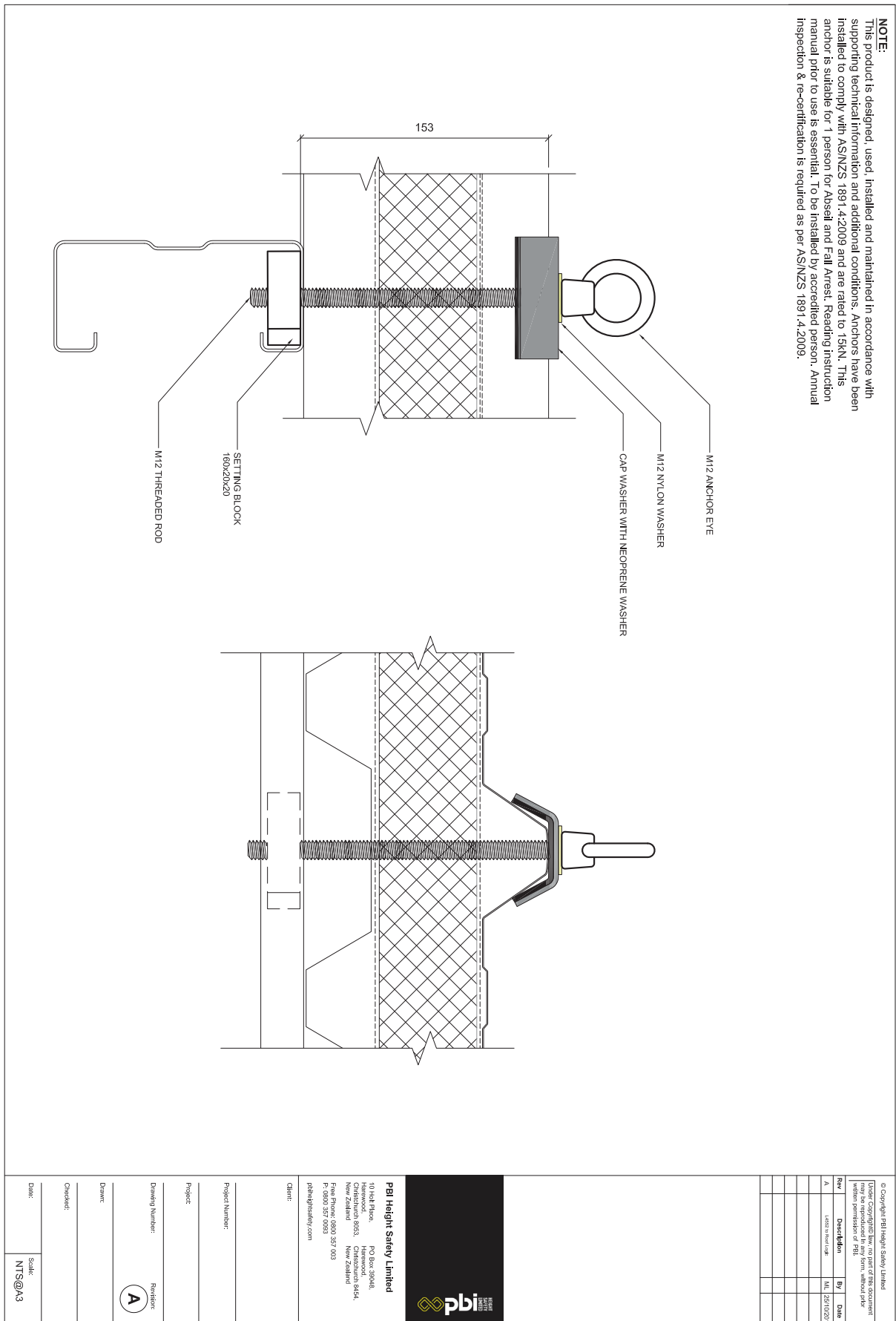
Our commitment to the environment extends to our customers, our staff, and the community in which we operate. We are committed to supplying products with primary components made of recyclable material and supplied with minimum packaging to retain its structure and integrity during transit.

We will continually measure our environmental impacts and aim to reduce these impacts.



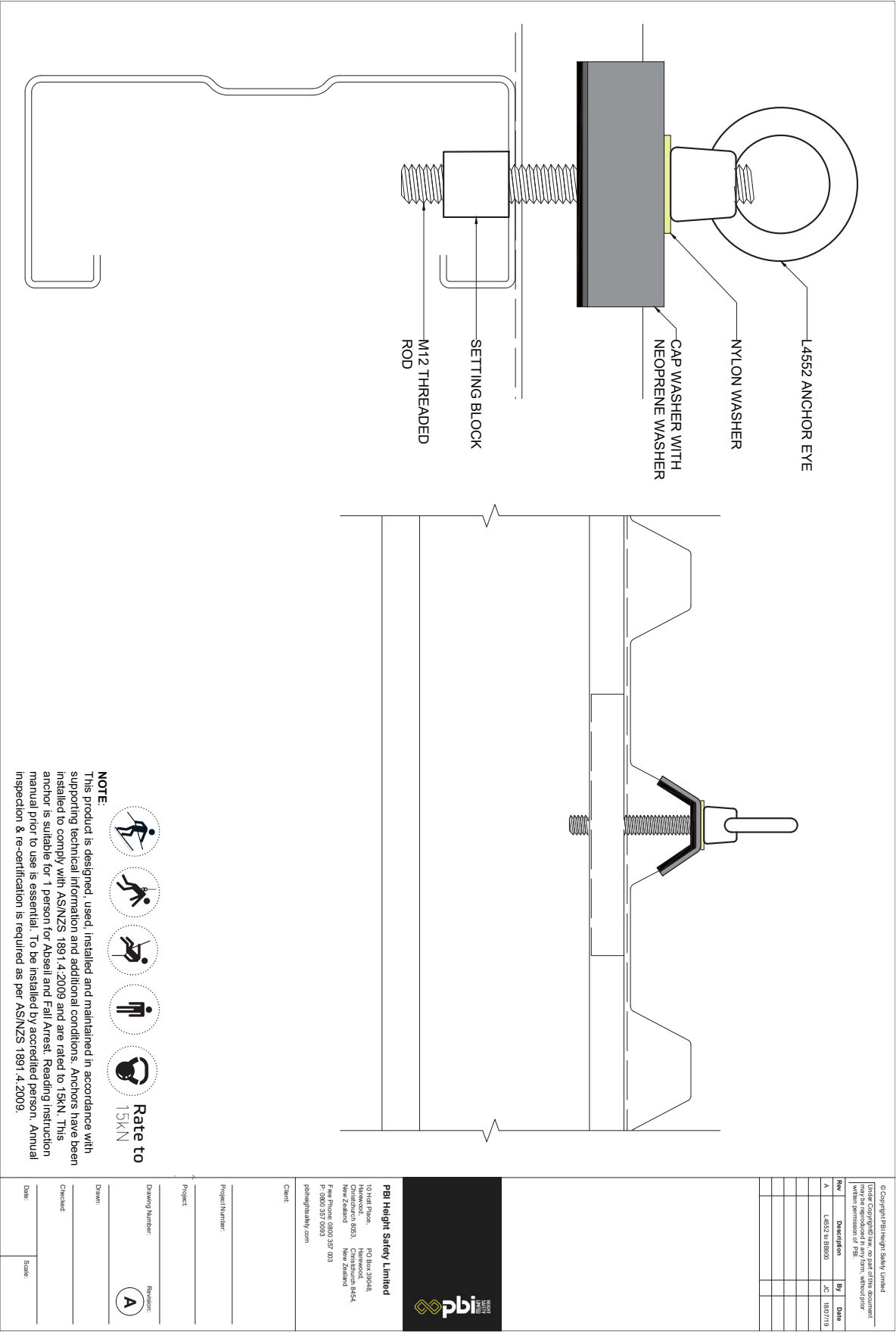


TECHNICAL DRAWING – Low Profile Trap to Warm Roof





TECHNICAL DRAWING – Low Profile Trap to BB900



PBI HEIGHT SAFETY

NEW ZEALAND OFFICES



CHRISTCHURCH

10 Holt Place
Harewood
Christchurch 8053

AUCKLAND

D23 / 930 Great South Road
Penrose
Auckland 1061

info@pbiheightsafety.com



TECHNICAL DRAWINGS KEY



Rate to
15kN



Person
Capacity



Abseil



Fall Arrest



Restraint
Technique